

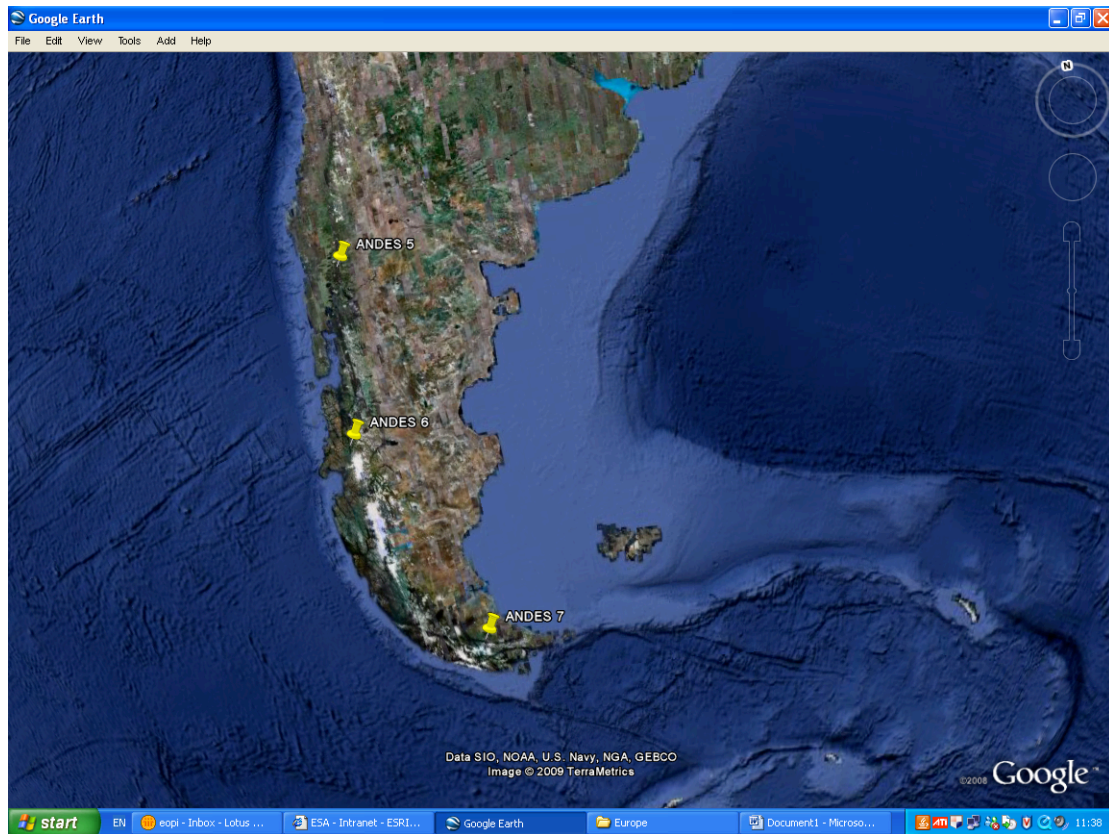
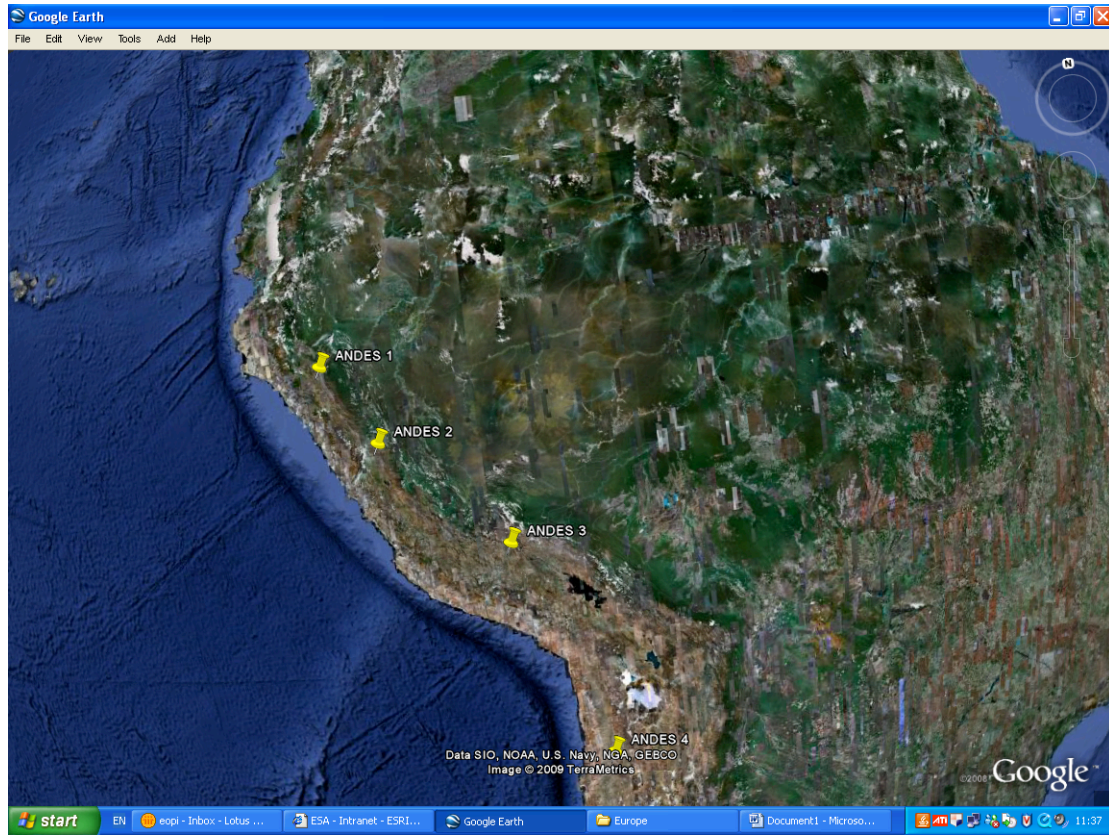
date/date March 11, 2009	ref./réf.	page/page 1 41
from/de F. Costantini, (SERCO) B.R. Bojkov (ESA, EOP-SEP)	visa/visa Kari Luojus (FMI)	
to/à GlobSnow consortium	copy/copie	
Subject/objet <u>Envisat ASAR measurement summary for the GlobSnow project.</u>		

This memorandum is in response to an enquiry raised during the GlobSnow Requirements Engineering Review (RER) meeting of February 3, 2009, regarding ESA Envisat ASAR measurement availability outside of Scandinavia/Finland, Greenland, Western-Siberia.

In this document, the total number of ASAR instrument measurement has been compiled over select locations with known snow occurrences for each operational month. The period covered by this analysis spans the Envisat launch through December 2008. It should be noted that these ASAR measurements may or may not be currently available in processed form.

The information was obtained using the ESA EOLI-SA catalogue tool (<http://earth.esa.int/object/index.cfm?fobjectid=5035>), both for the ASAR Global Monitoring mode and Wide Swath mode. Each location has been input as a “geographical point” into the search engine.

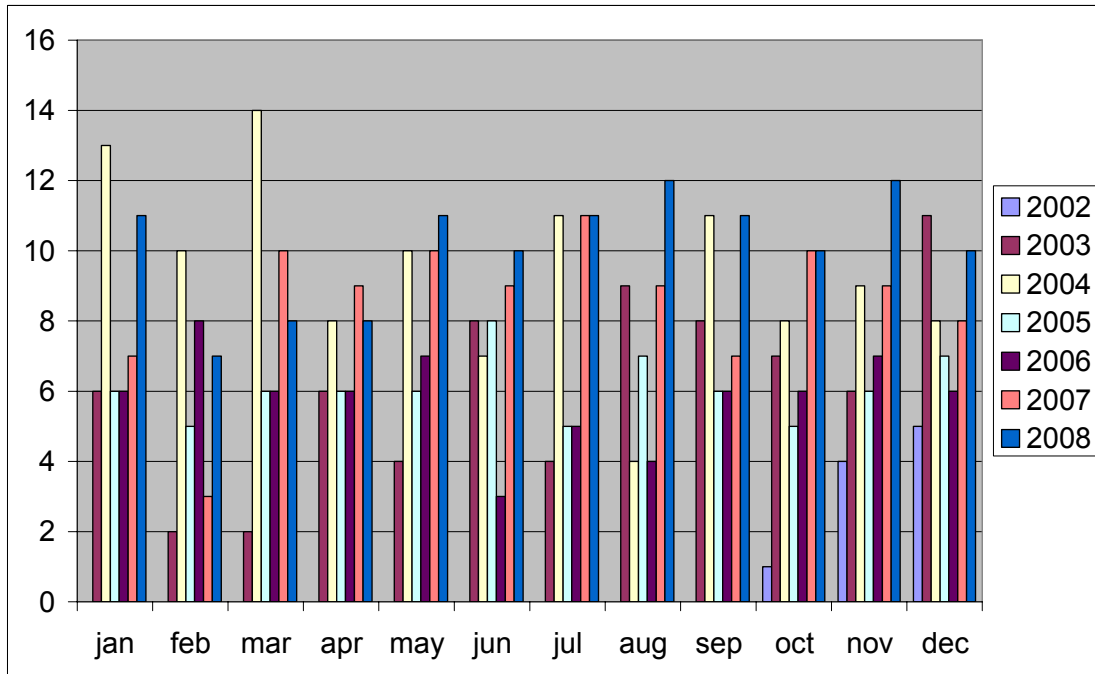
# ANDES



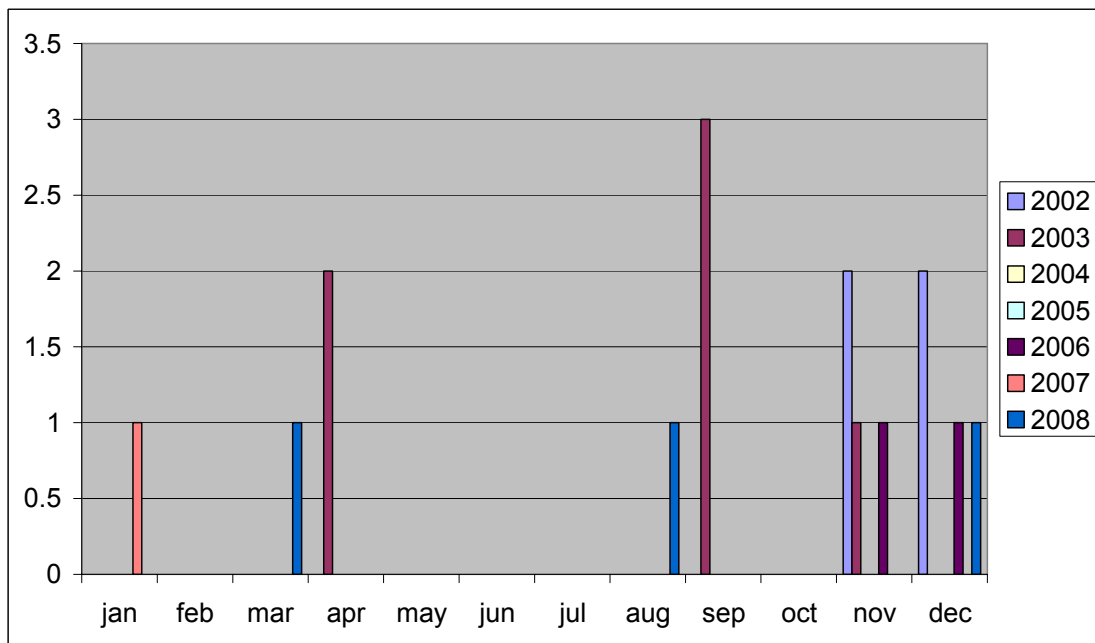
# ANDES

Approx.scene center : -21.65 -65.45

## Global Monitoring

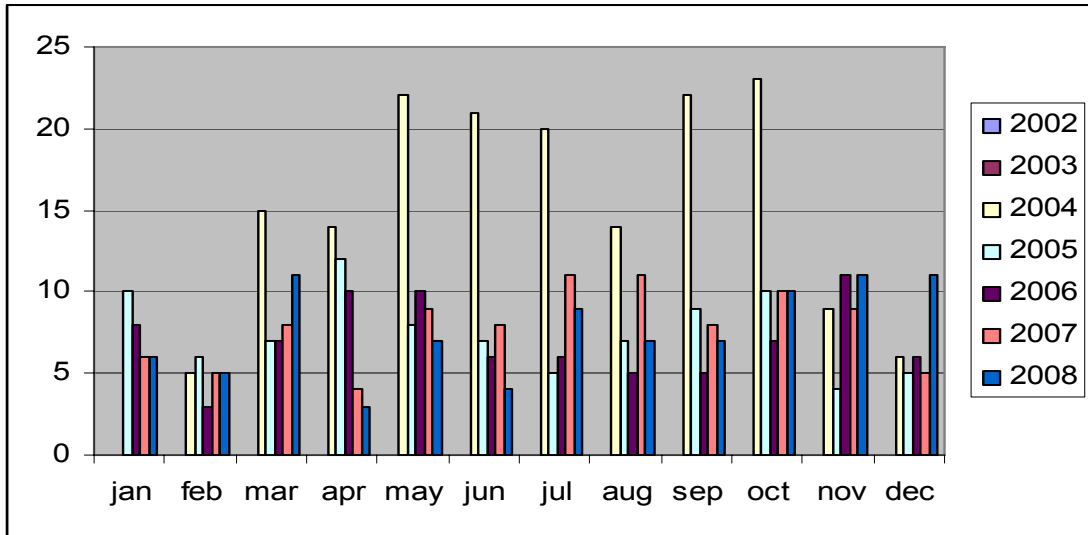


## Wide Swath

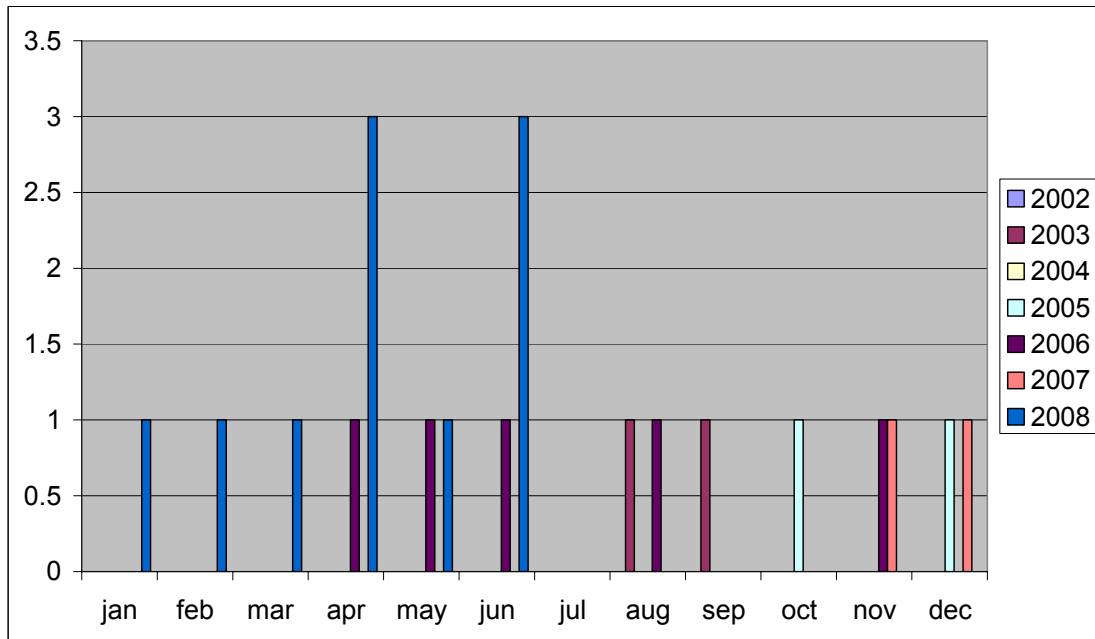


Approx.scene center : -22.31 -65.66

Global Monitoring



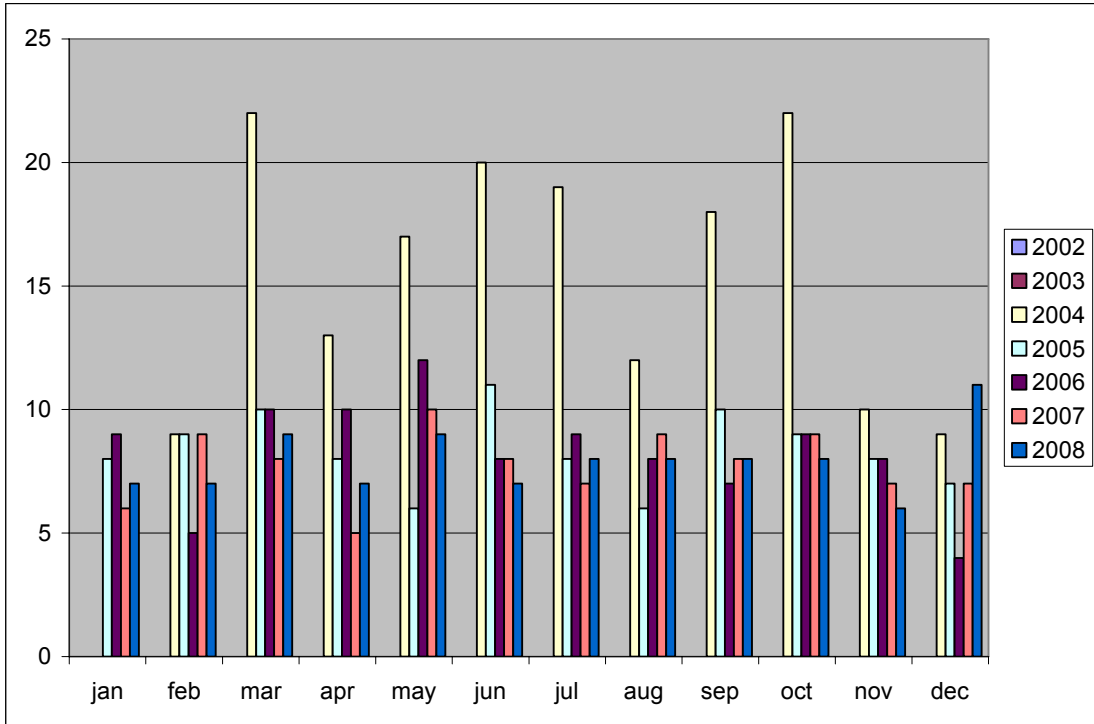
Wide Swath



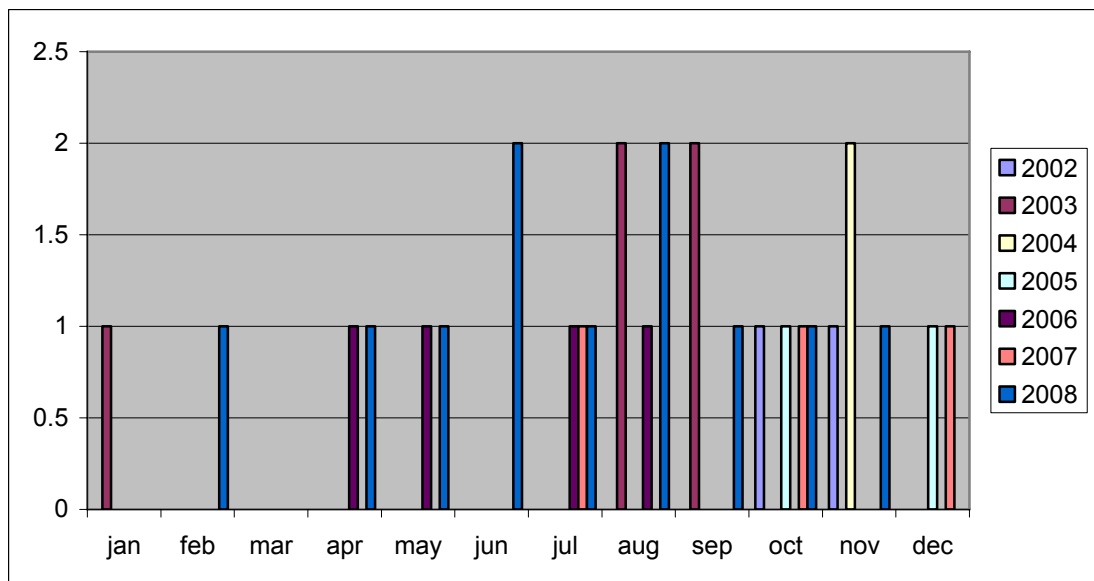


Approx.scene center : -22.71 -66.26

### Global Monitoring

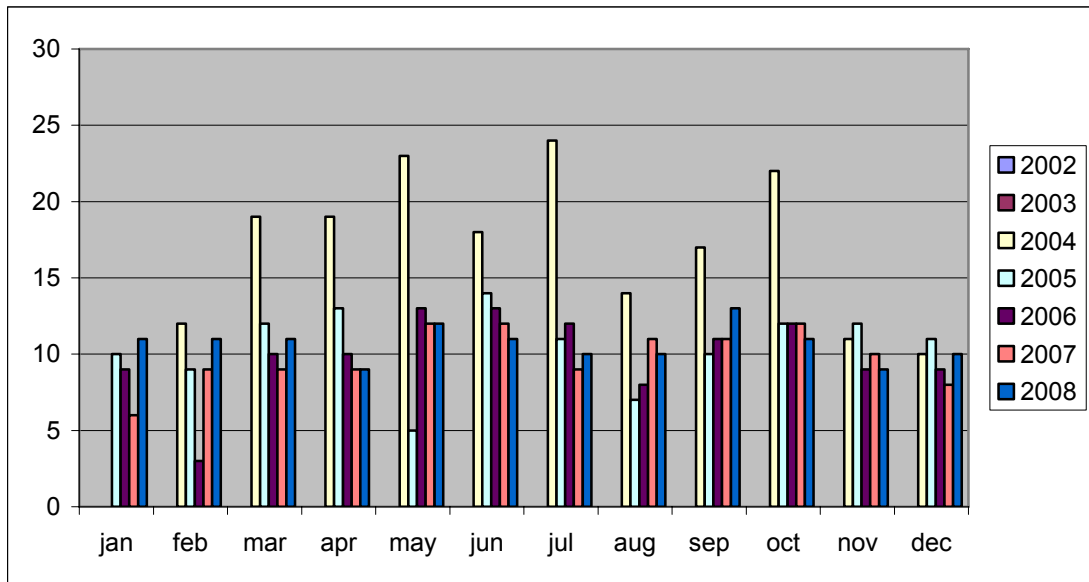


### Wide Swath

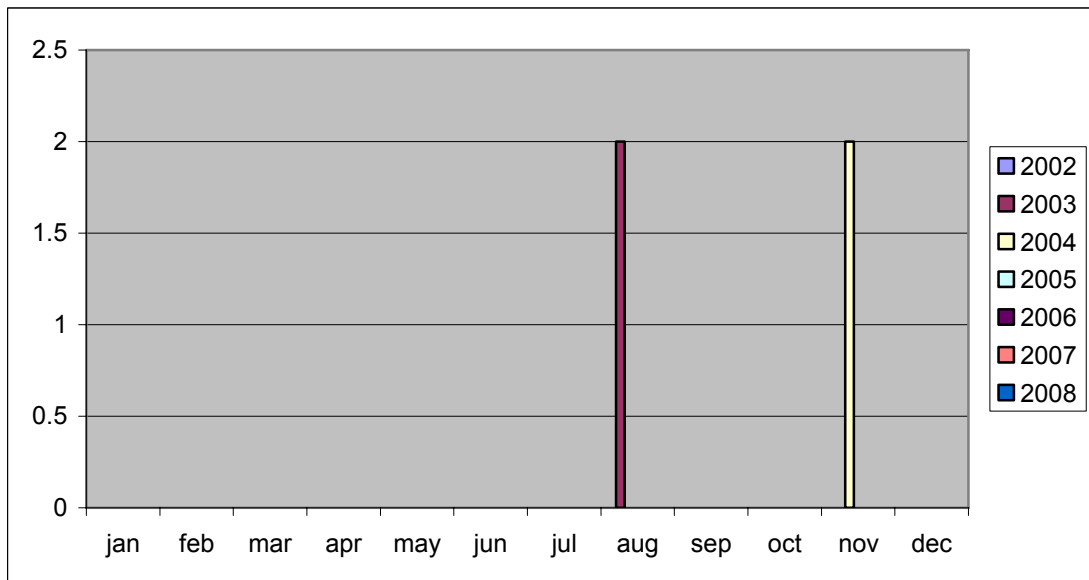


Approx.scene center : -28.34 -70.33

Global Monitoring mode

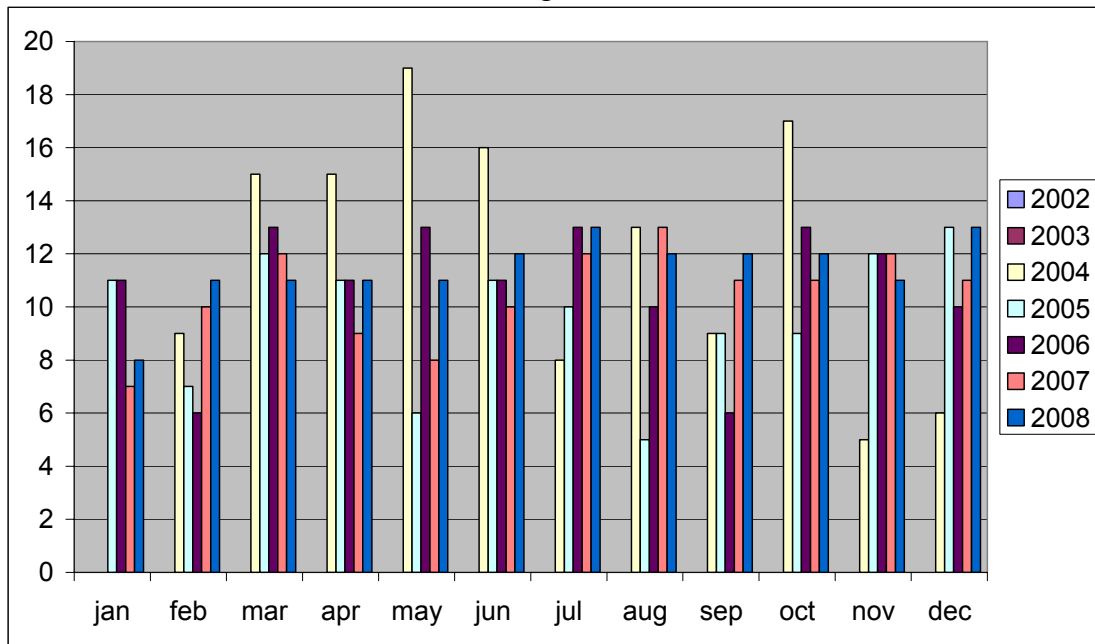


Wide Swath

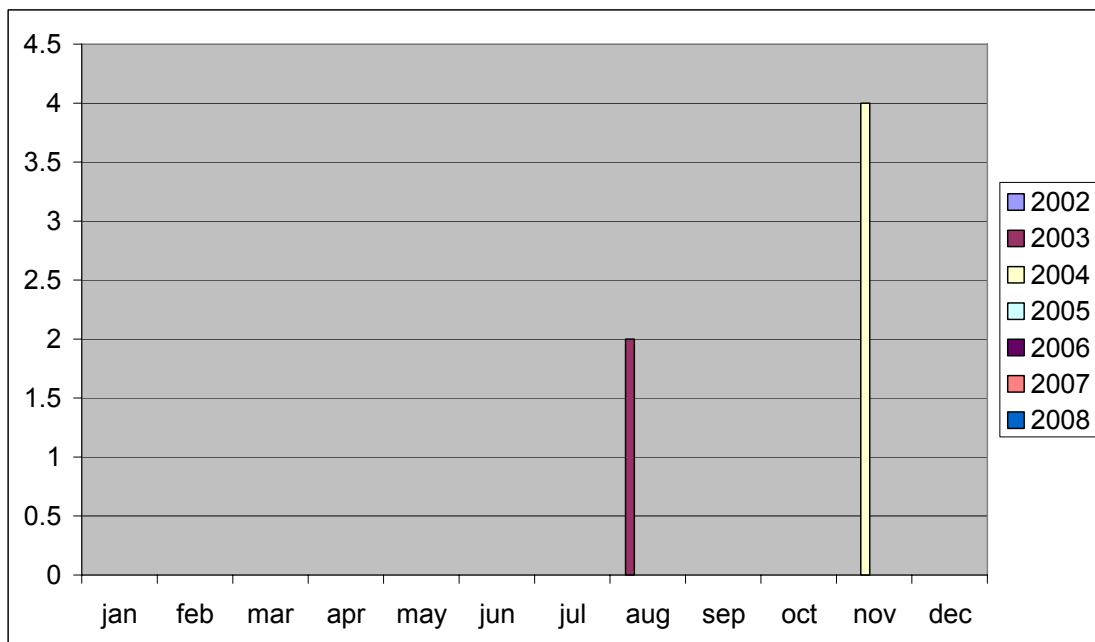


Approx.scene center : -38.93 -72.56

Global Monitoring mode

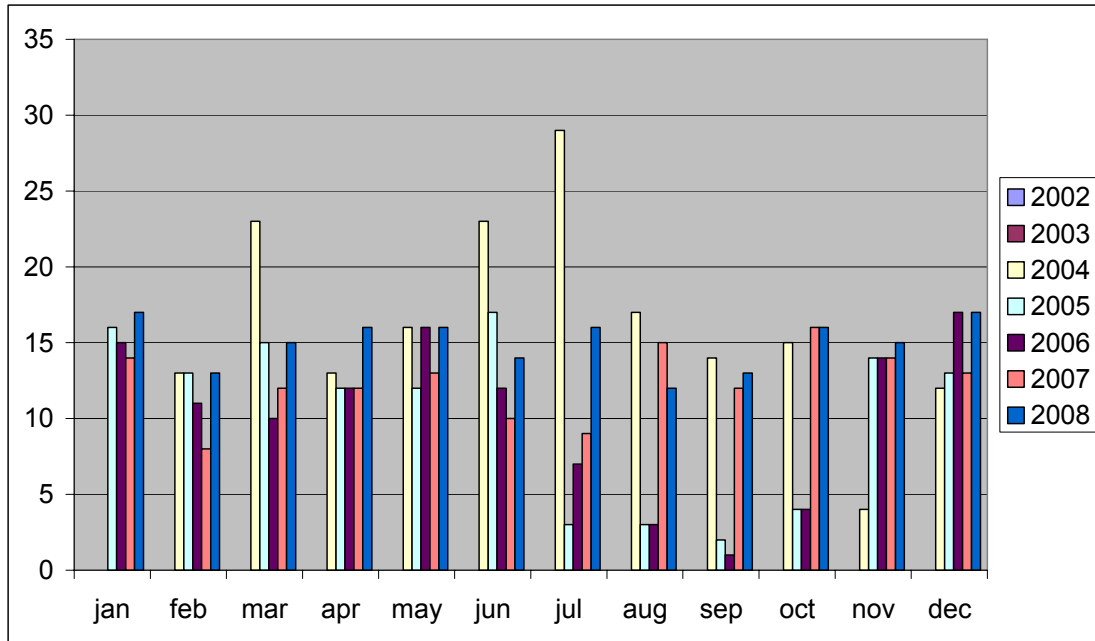


Wide Swath mode

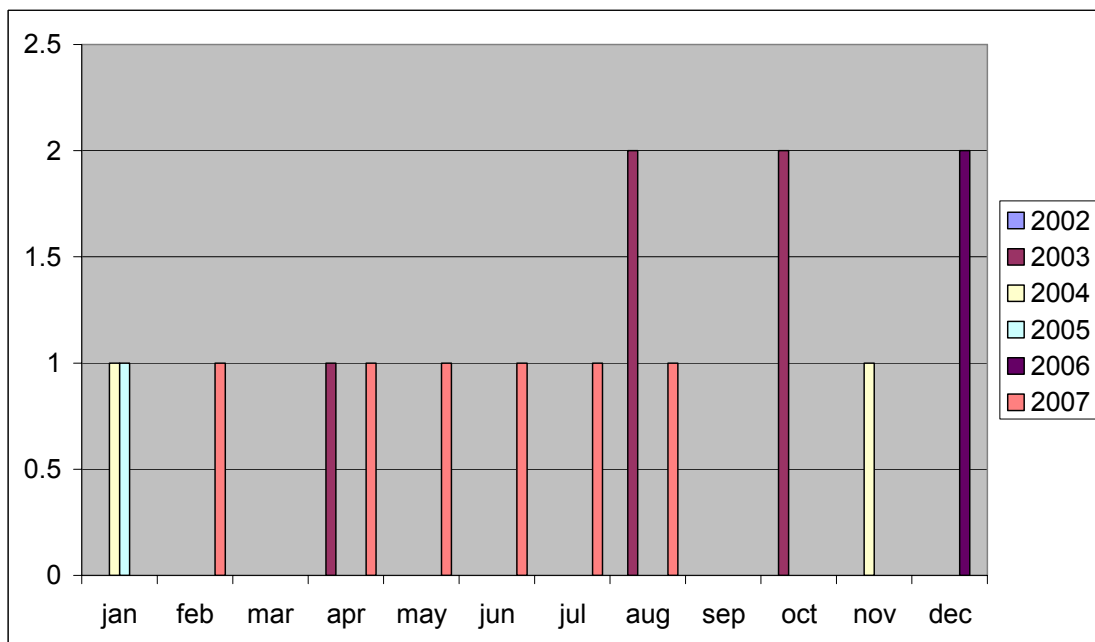


Approx.scene center : -46.19 -71.17

### Global Monitoring mode



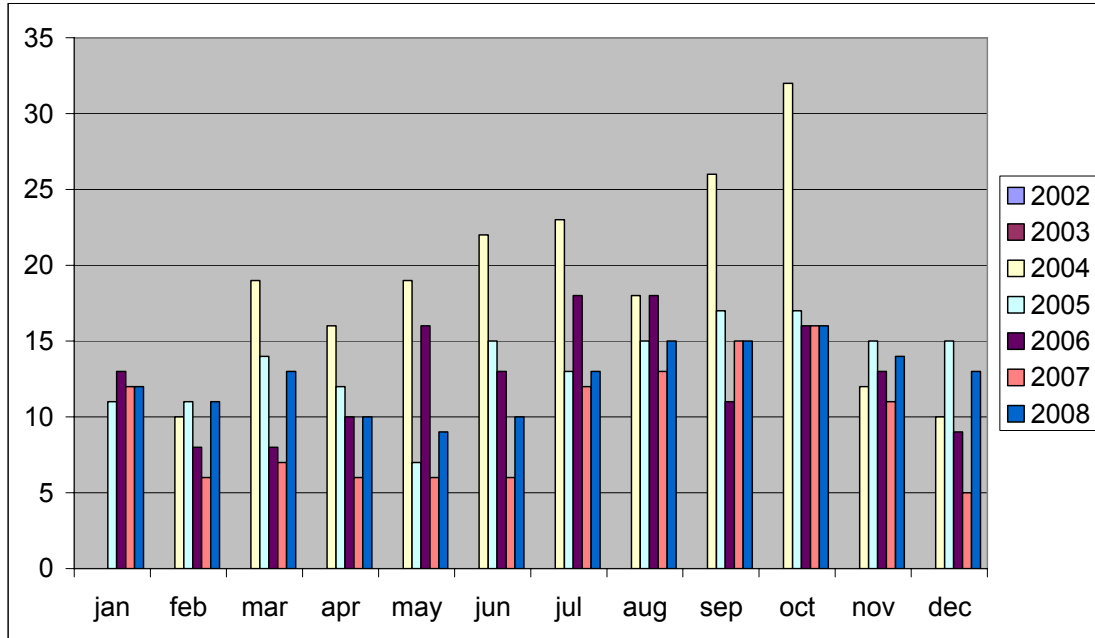
### Wide Swath mode



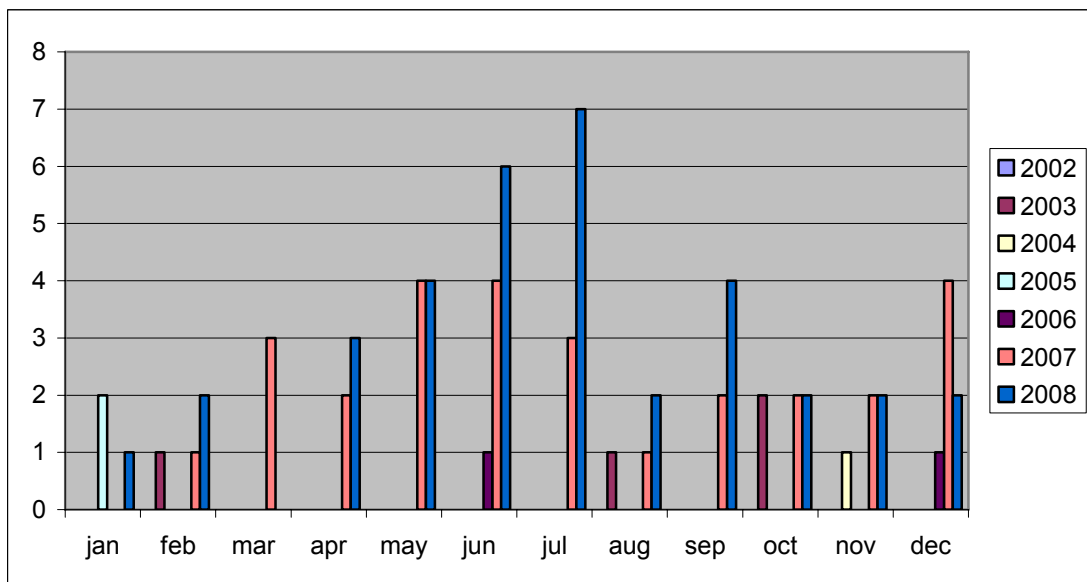


Approx.scene center :- 47.03 -71.45

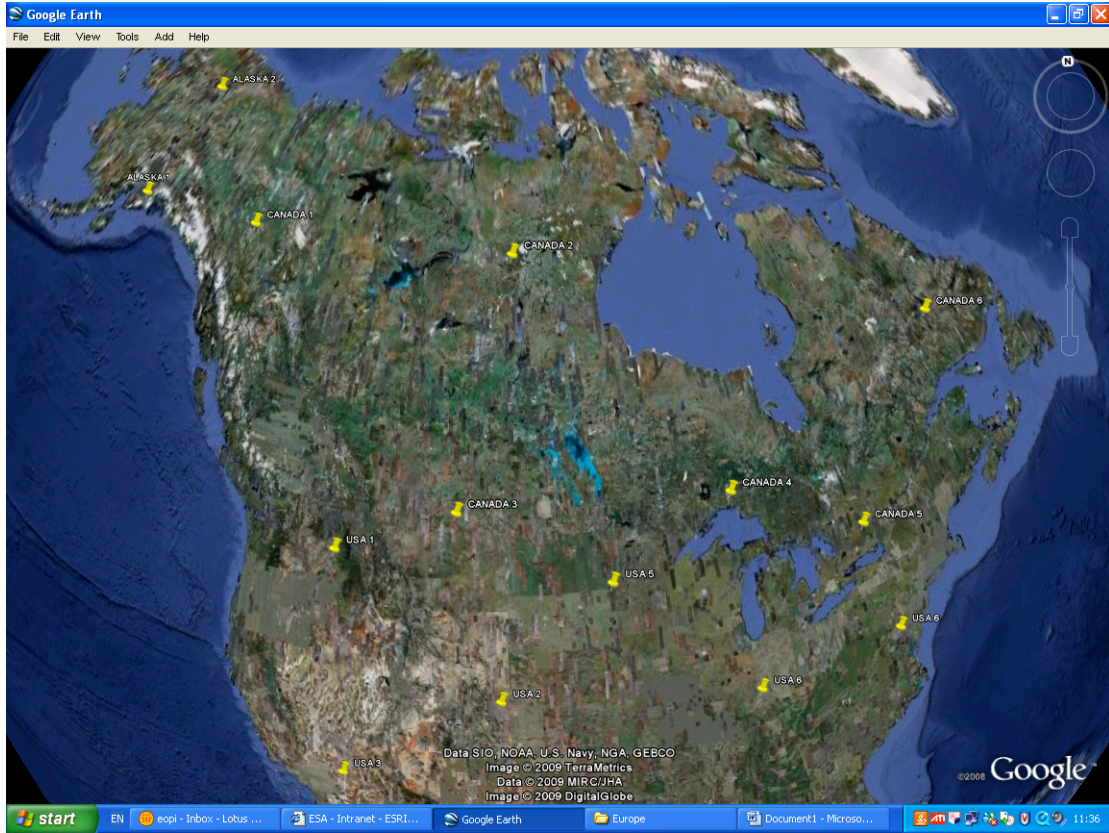
### Global Monitoring mode



### Wide Swath mode



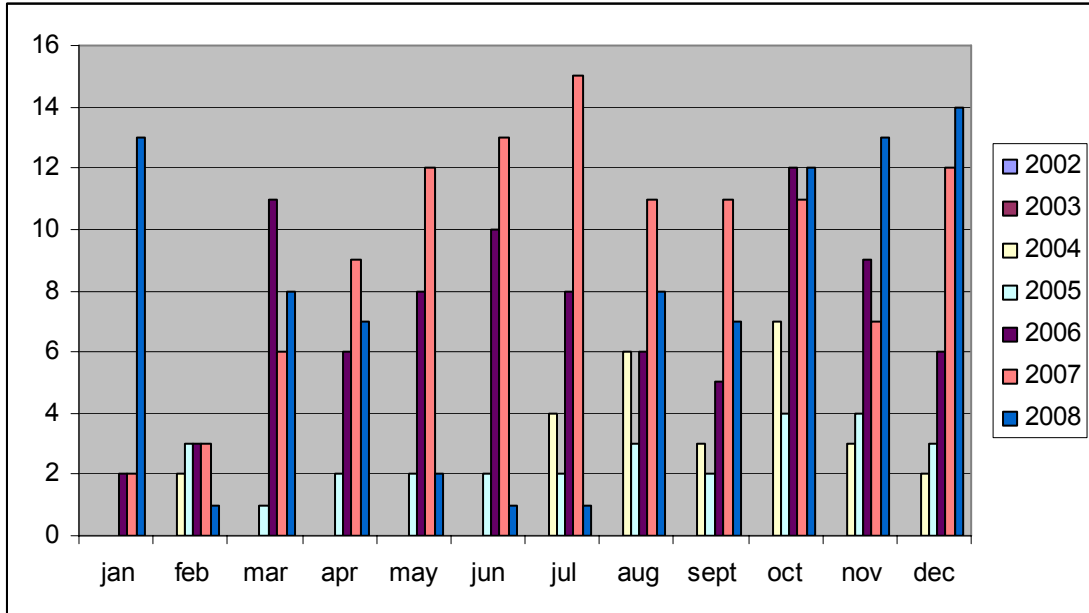
# NORTH AMERICA



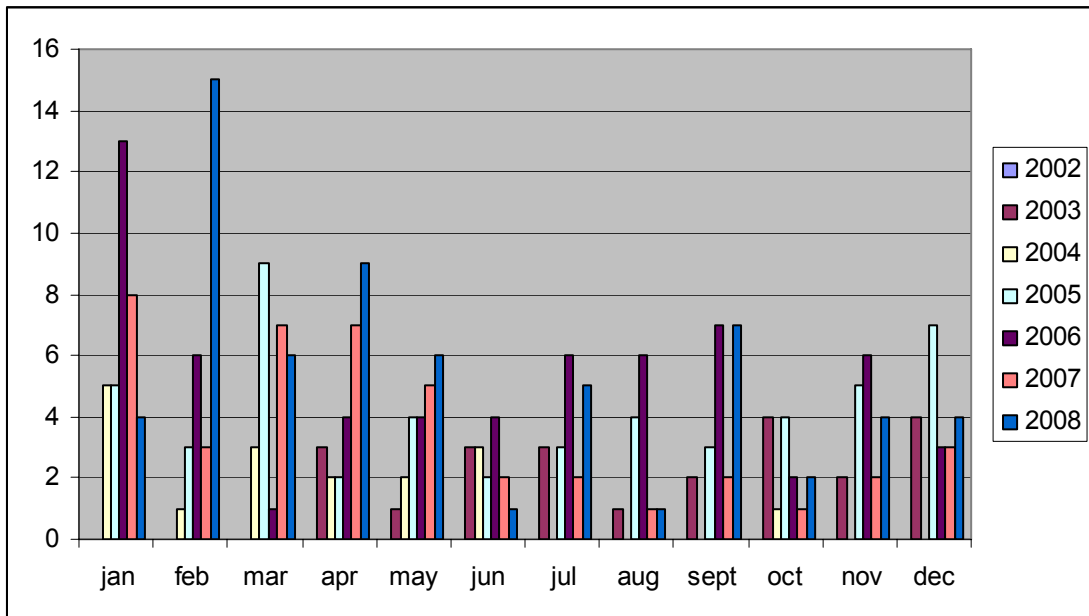
# Alaska

Approx.scene center : 60 48 148 50

## Global Monitoring Mode

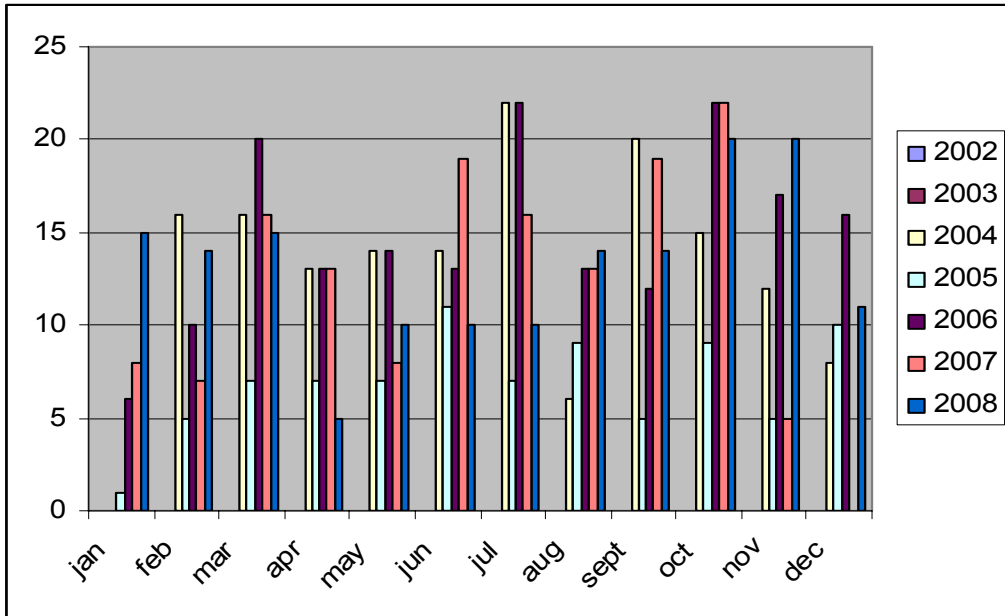


## Wide swath mode

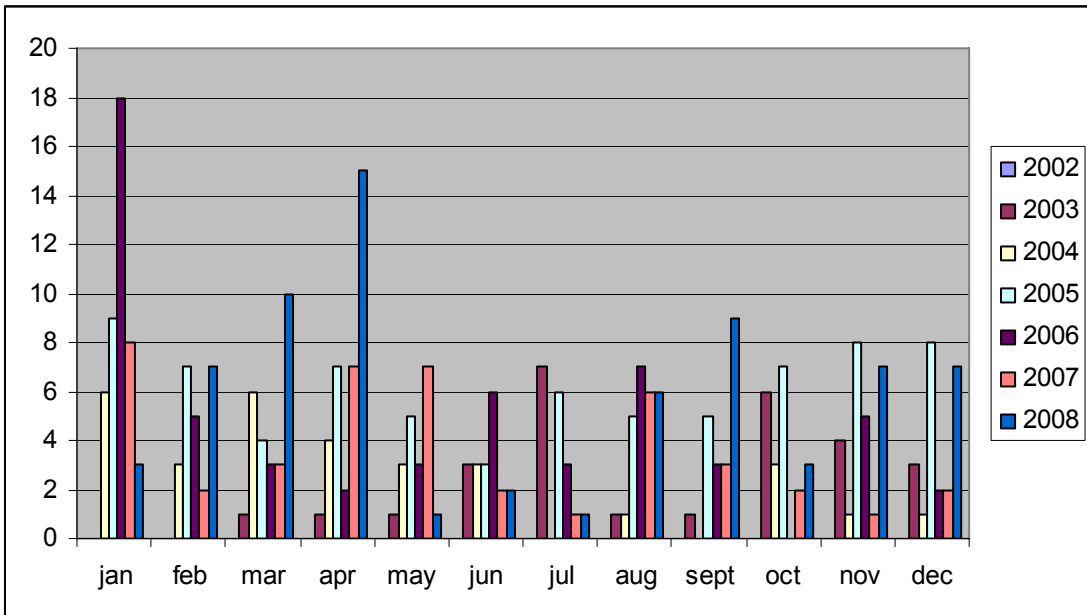


Approx.scene center : 67 30 150 75

### Global monitoring mode



### Wide Swath

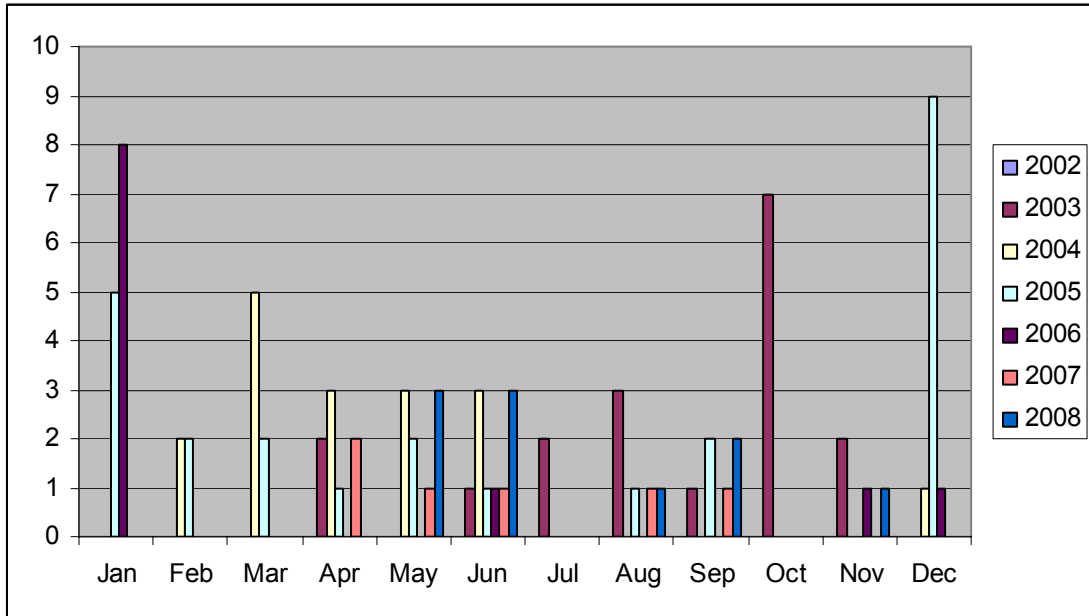




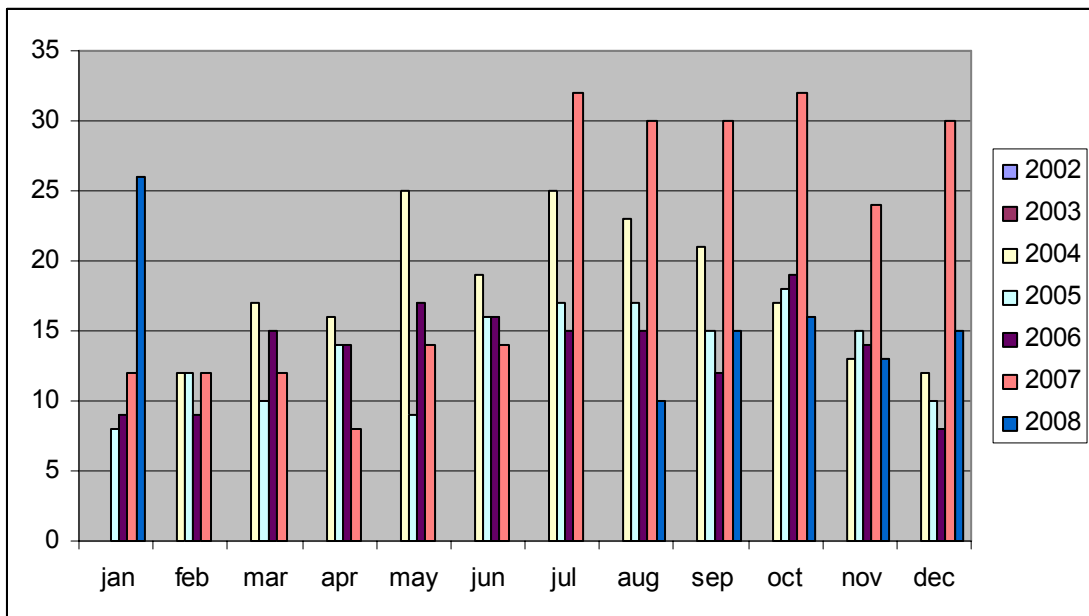
# CANADA

Approx.scene center : 56 38 150 75

Global monitoring Mode

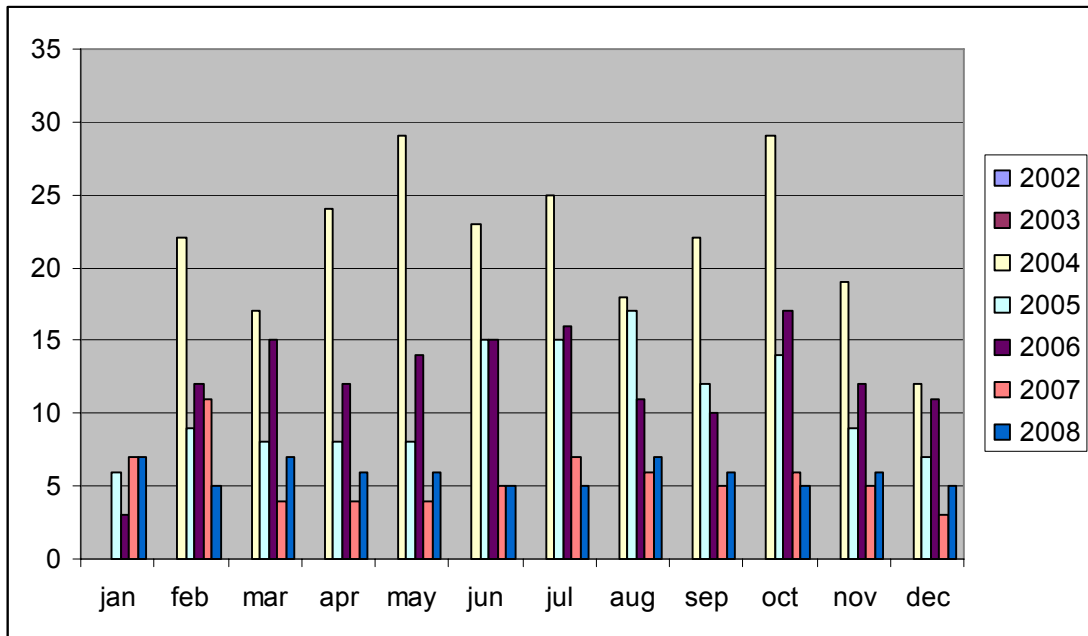


Wide Swath mode

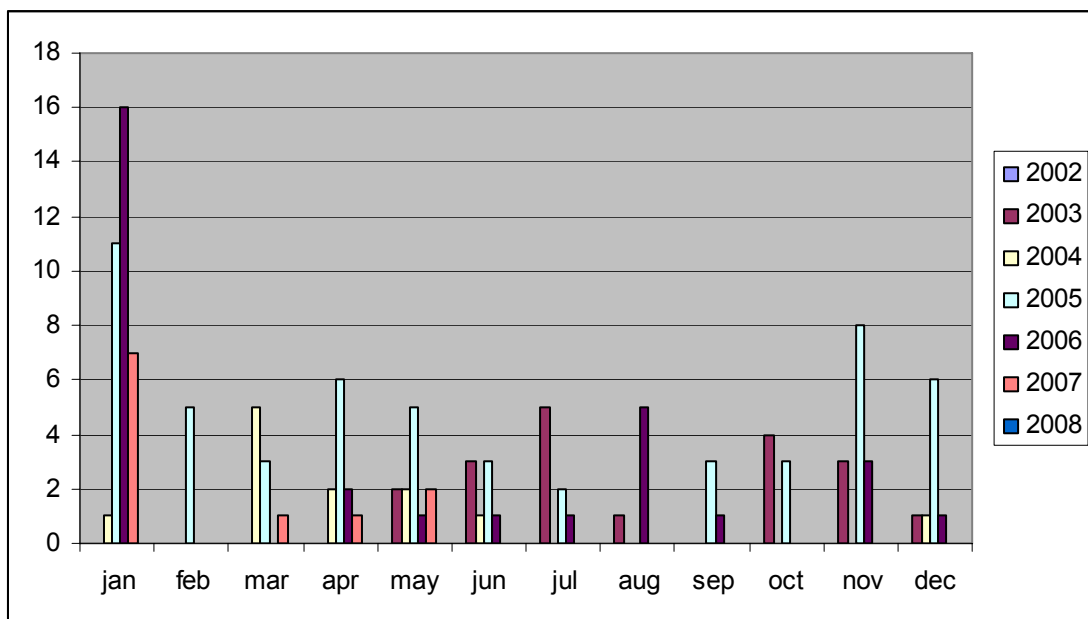


Approx.scene center : 56 47 114 34

### Global Monitoring

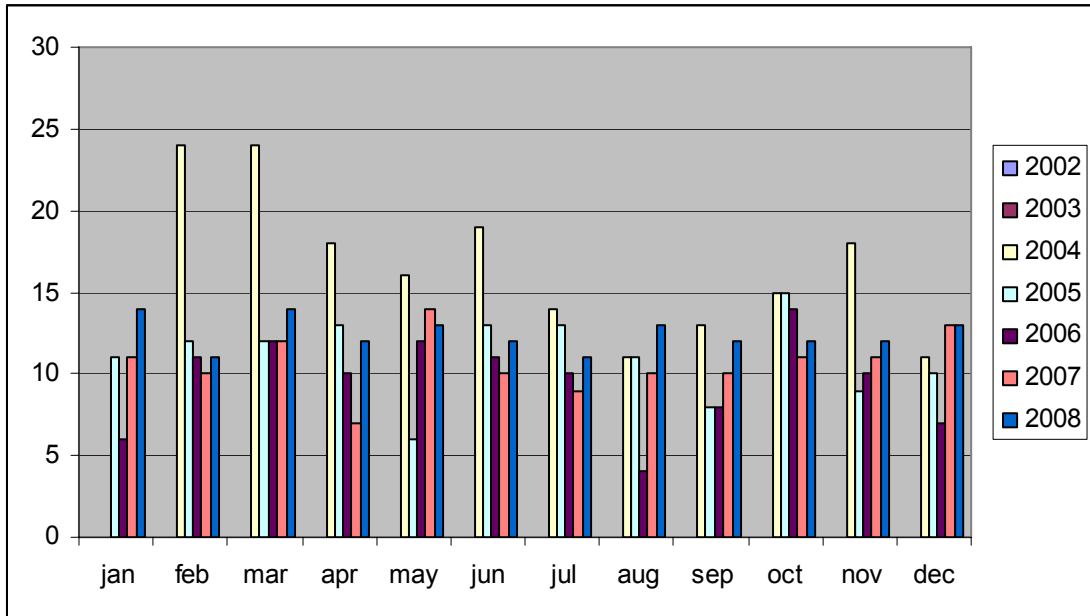


### Wide Swath Mode

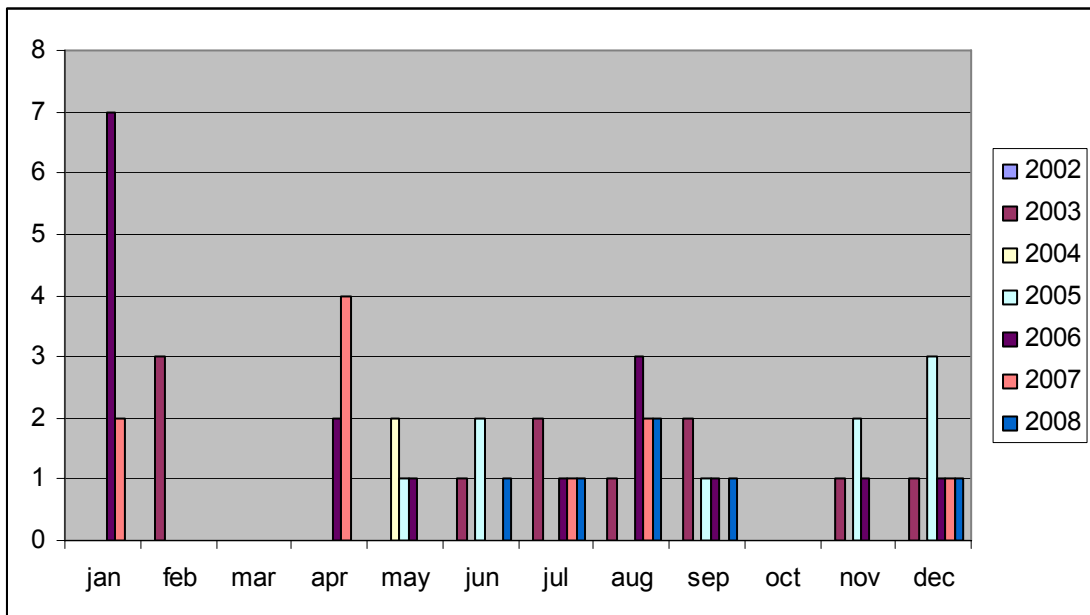


Approx.scene center : 49 12 114 54

### Global Monitoring

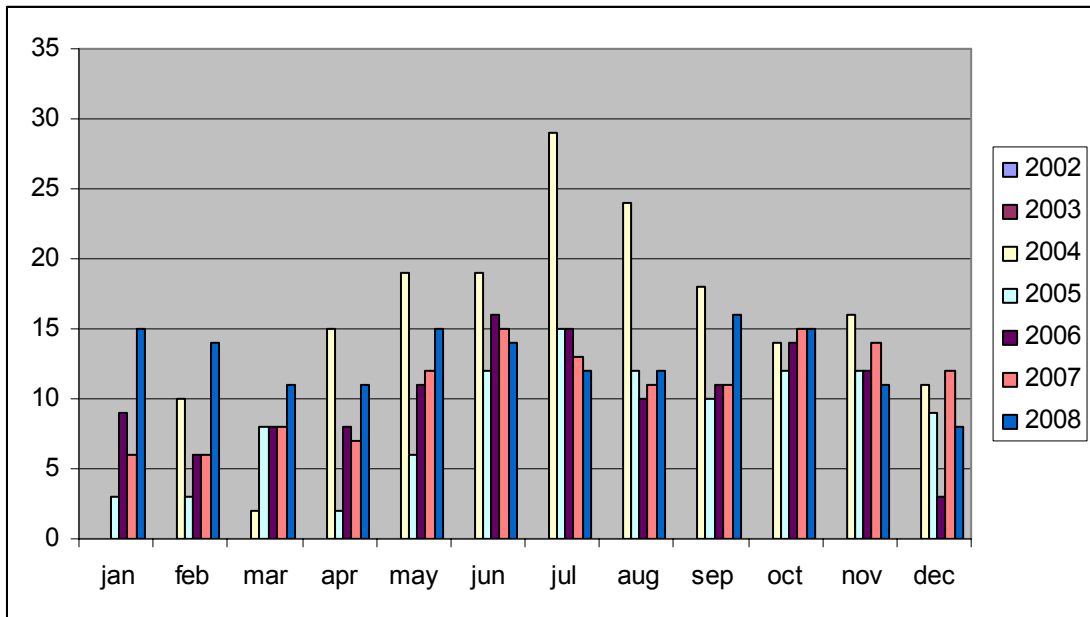


### Wide monitoring

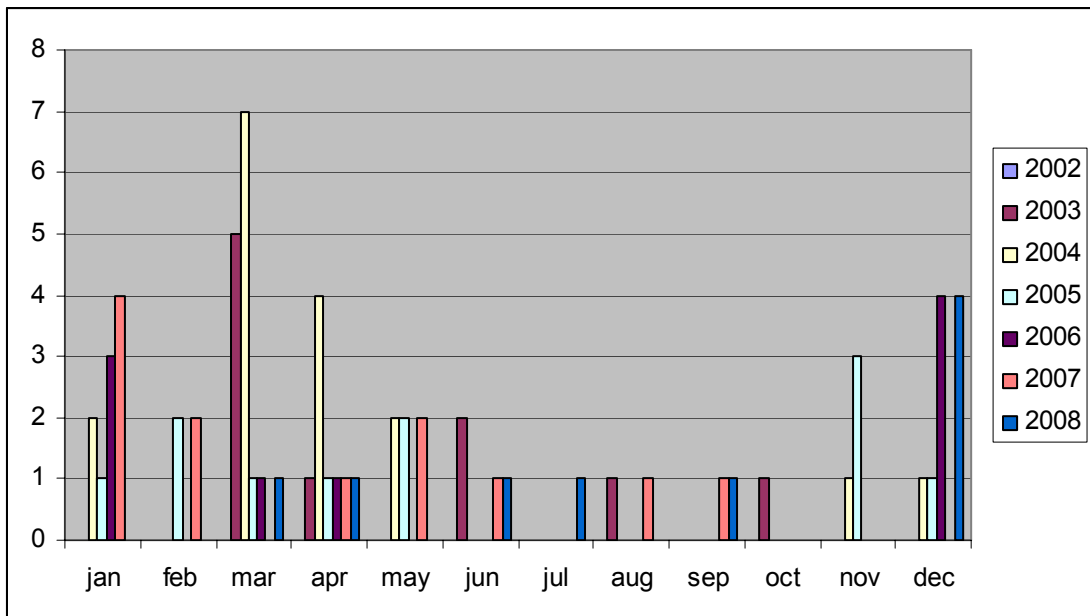


Approx.scene center : 45 25 75 41

### Global Monitoring



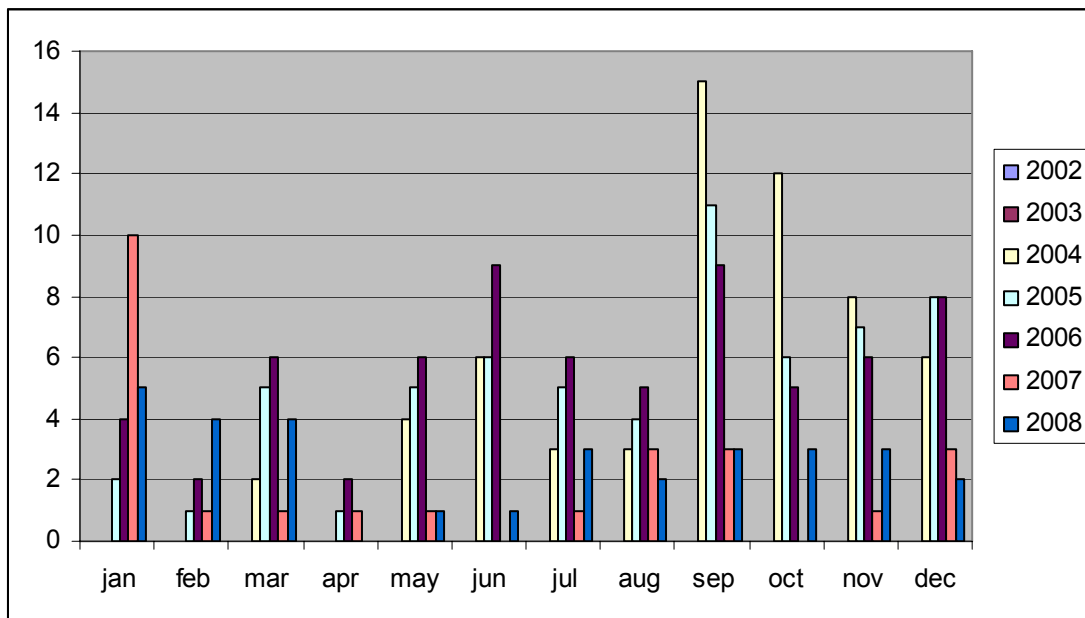
### Wide Swath



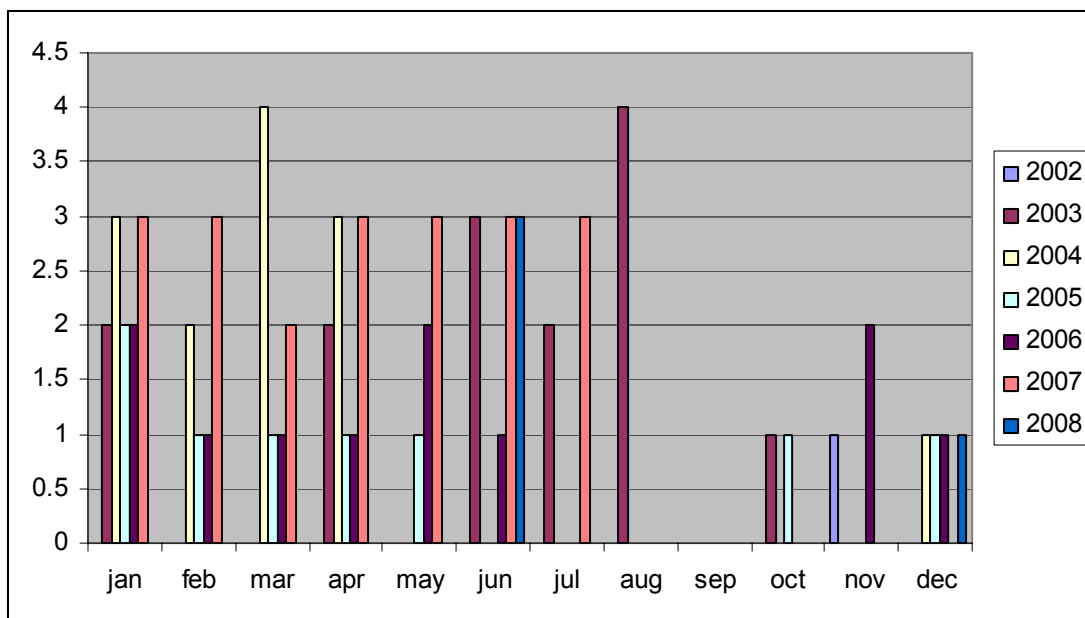


Approx.scene center : 52 54 66 31

### Global monitoring

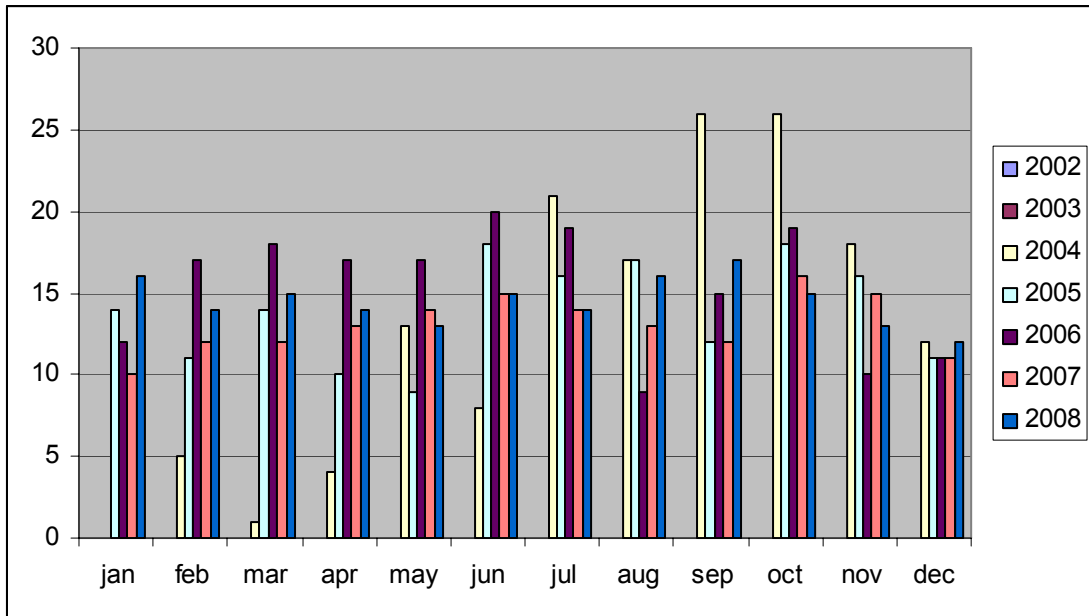


### Wide Swath

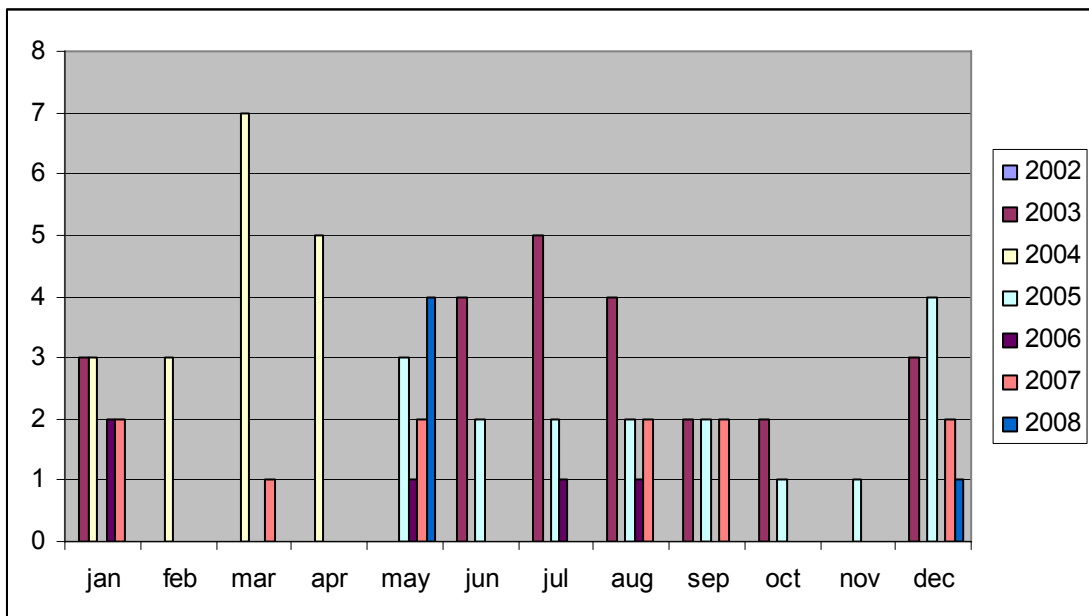


Approx.scene center : 54.27 -67.40

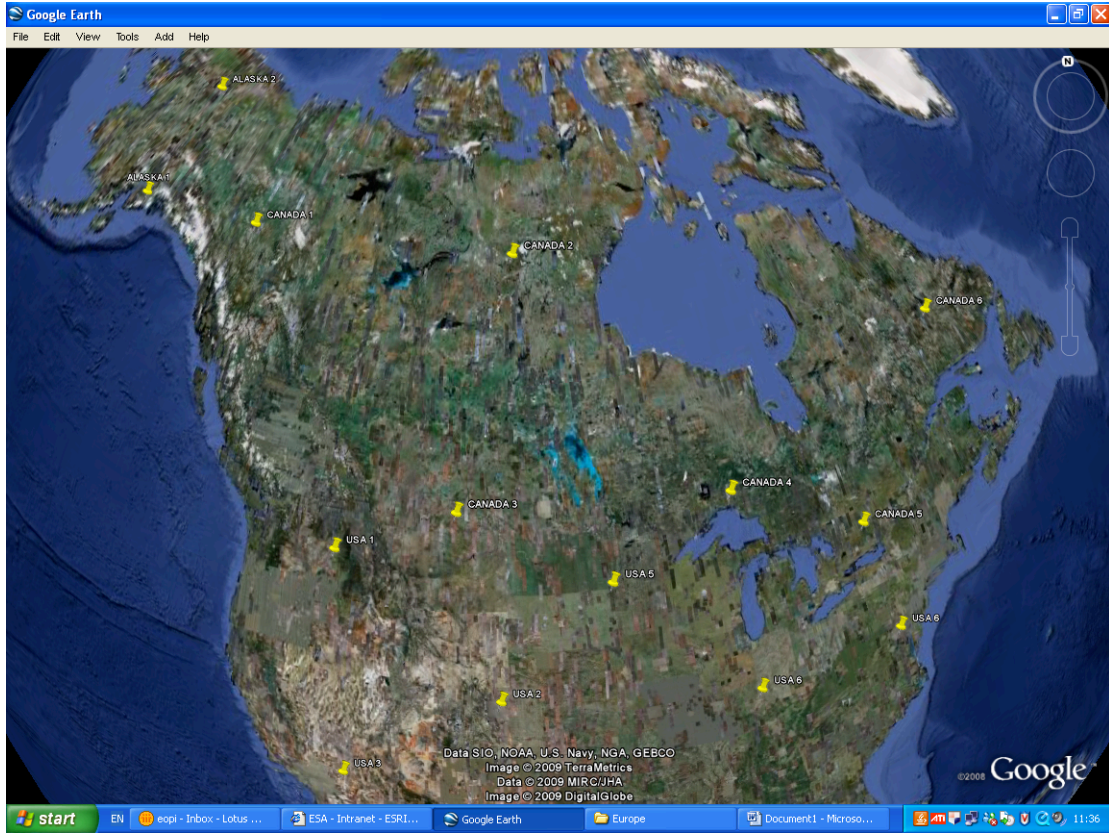
Global Monitoring



Wide Swath



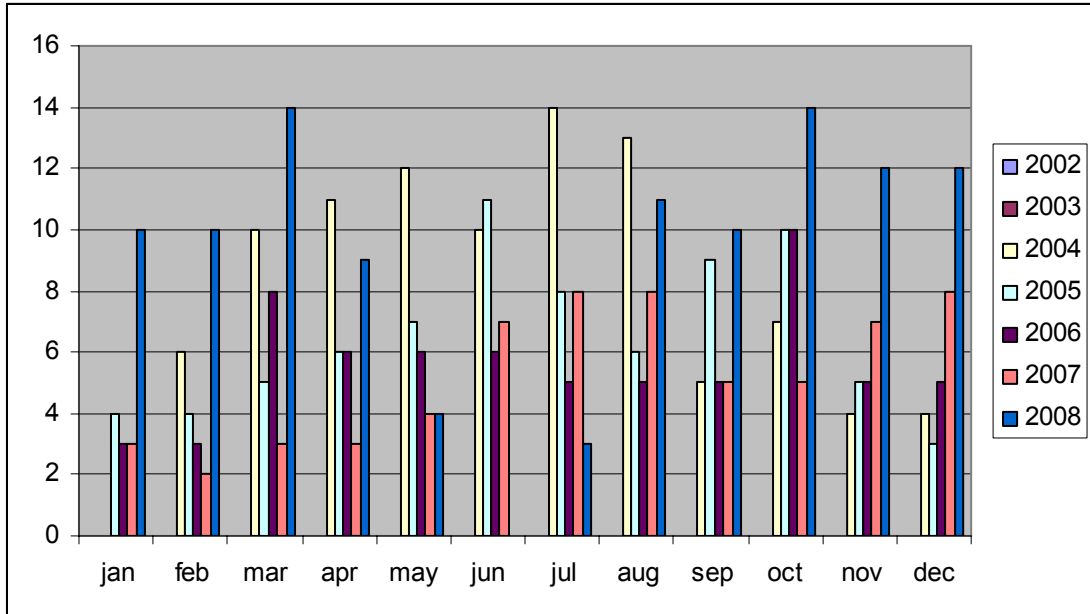
# NORTH AMERICA



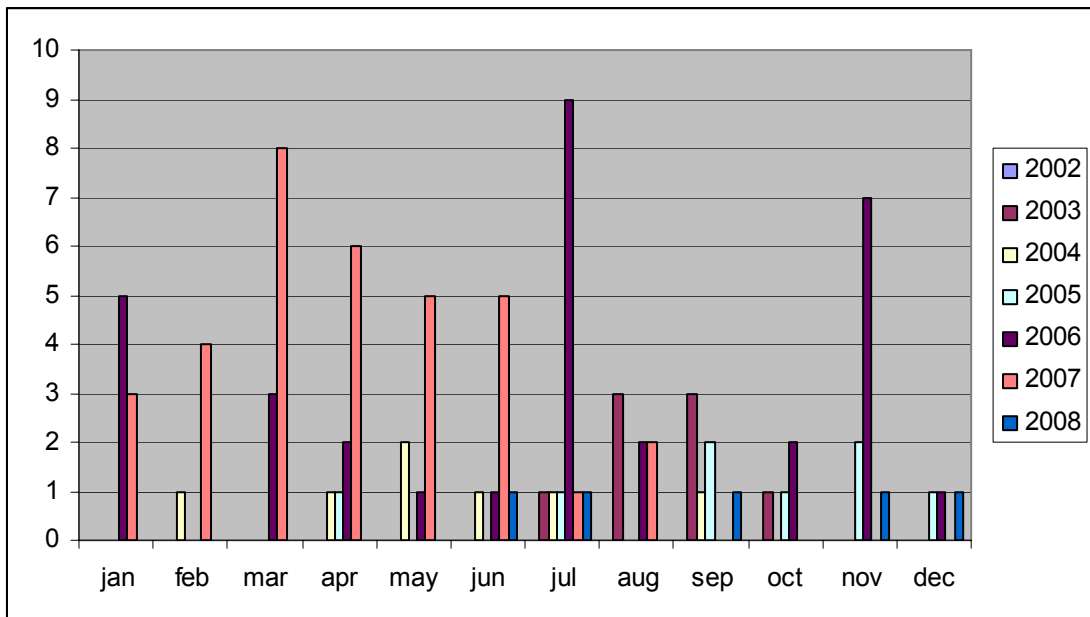
# USA

Approx.scene center : 47 58 120 54

## Global Monitoring

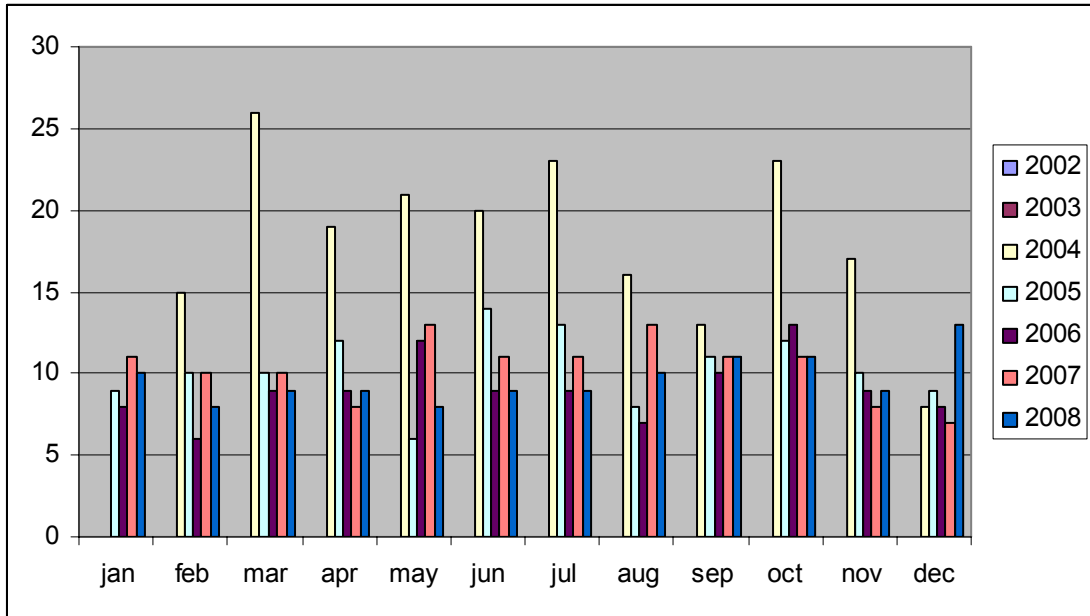


## Wide Swath

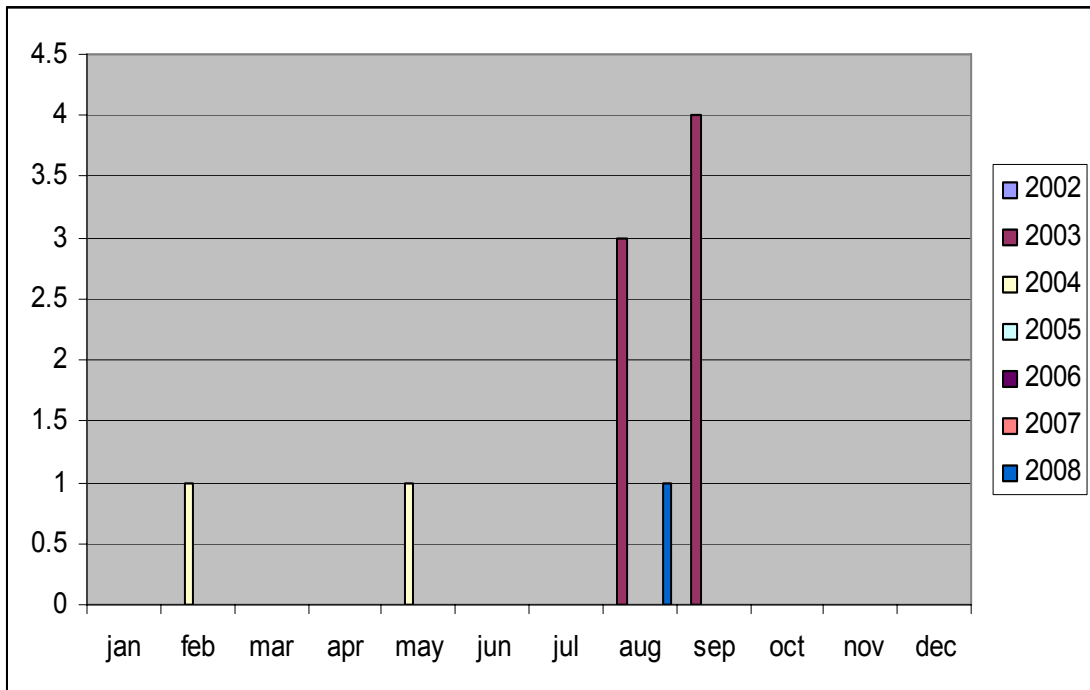


Approx.scene center : 39 45 104 59

### Global monitoring

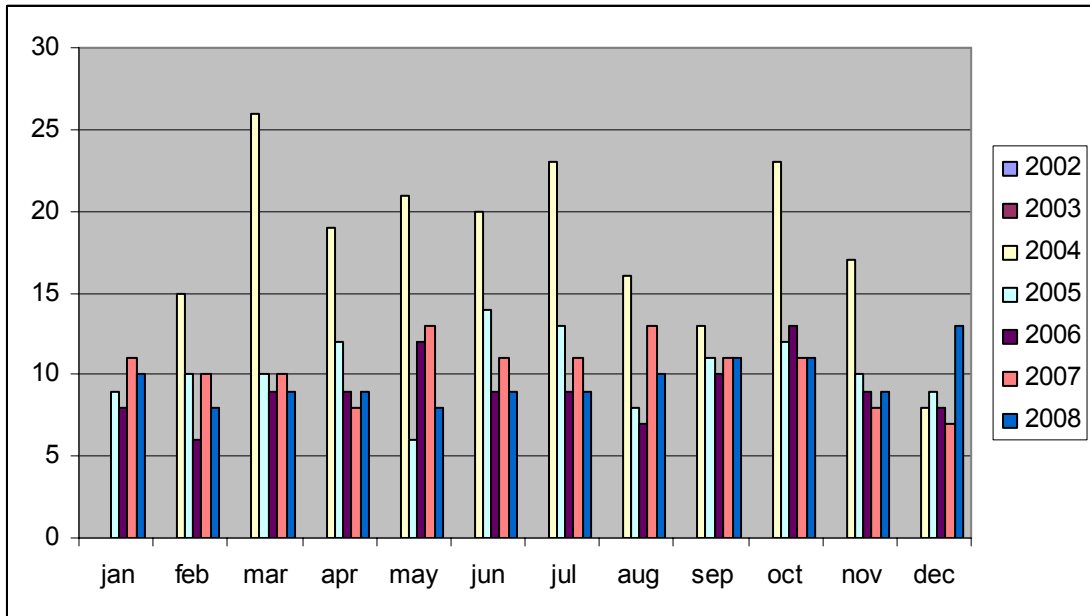


### Wide Swath

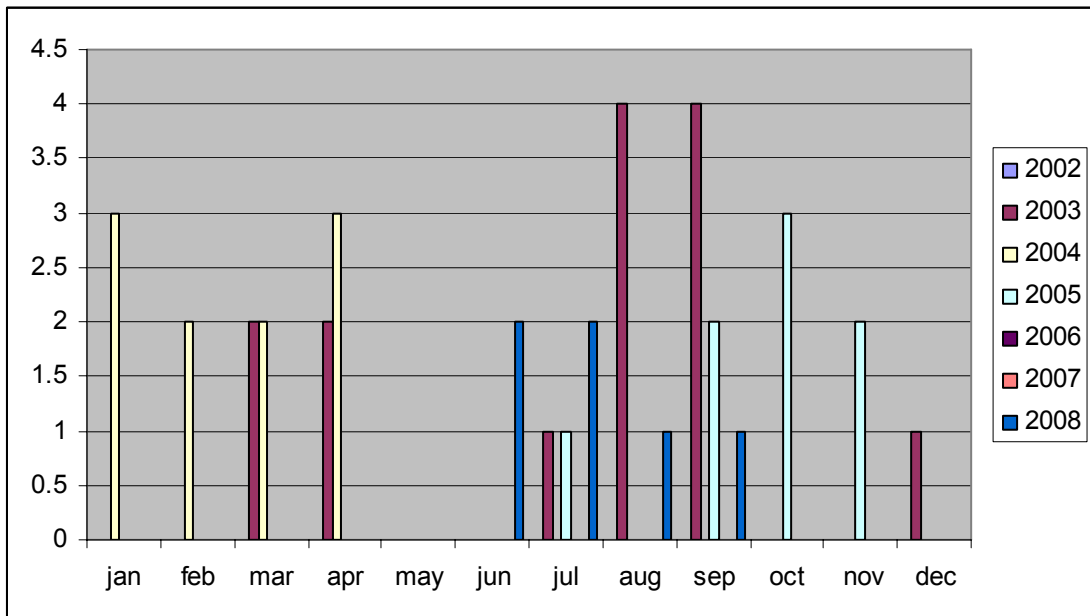


Approx.scene center : 36 14 115 14

### Global monitoring

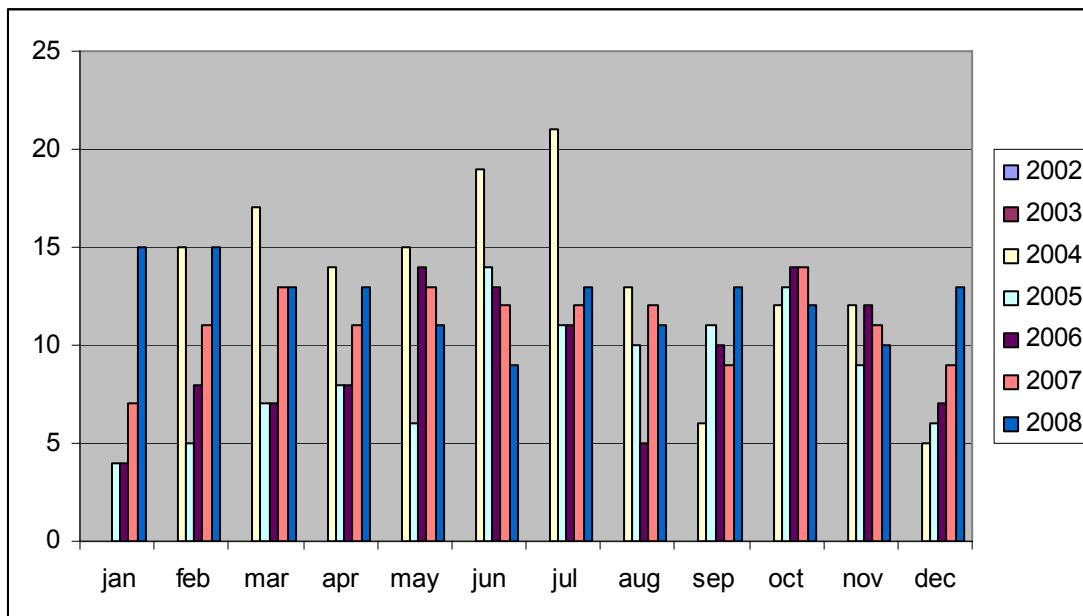


### Wide Swath

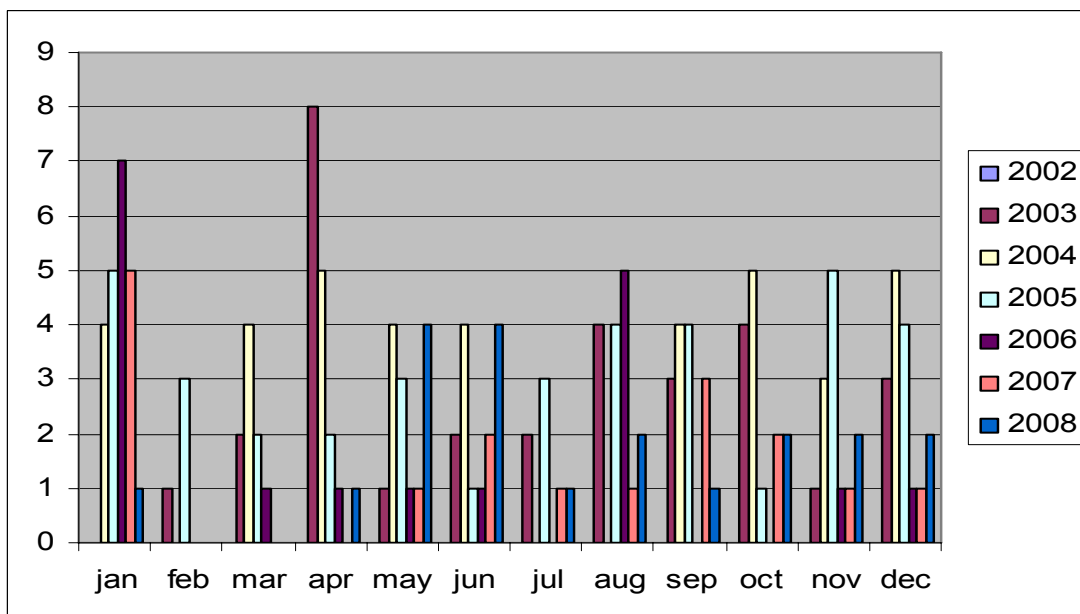


Approx.scene center : 46 33 99 23

### Global monitoring

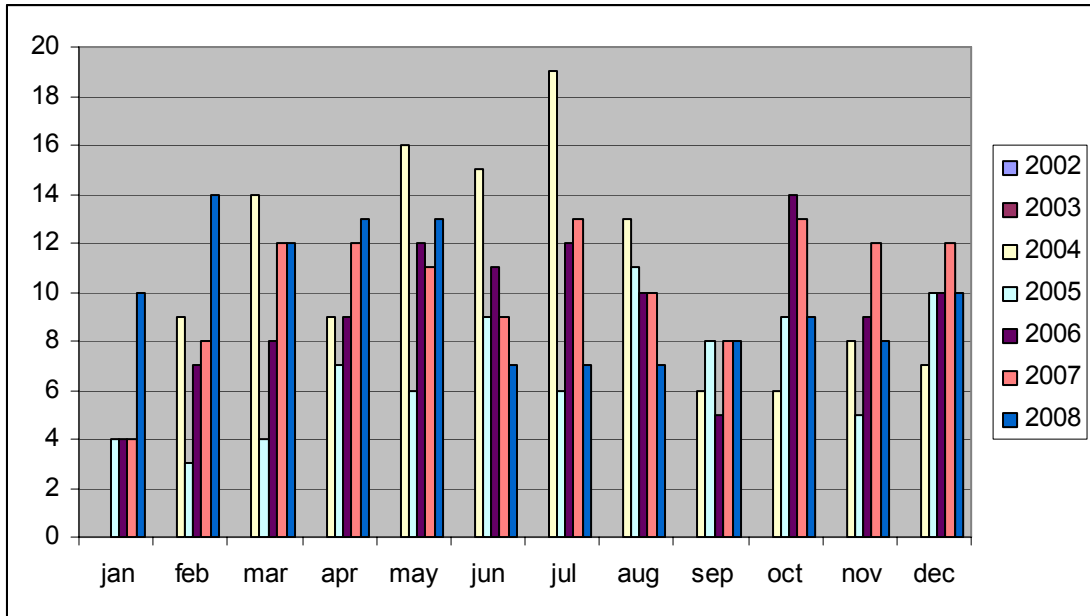


### Wide swath

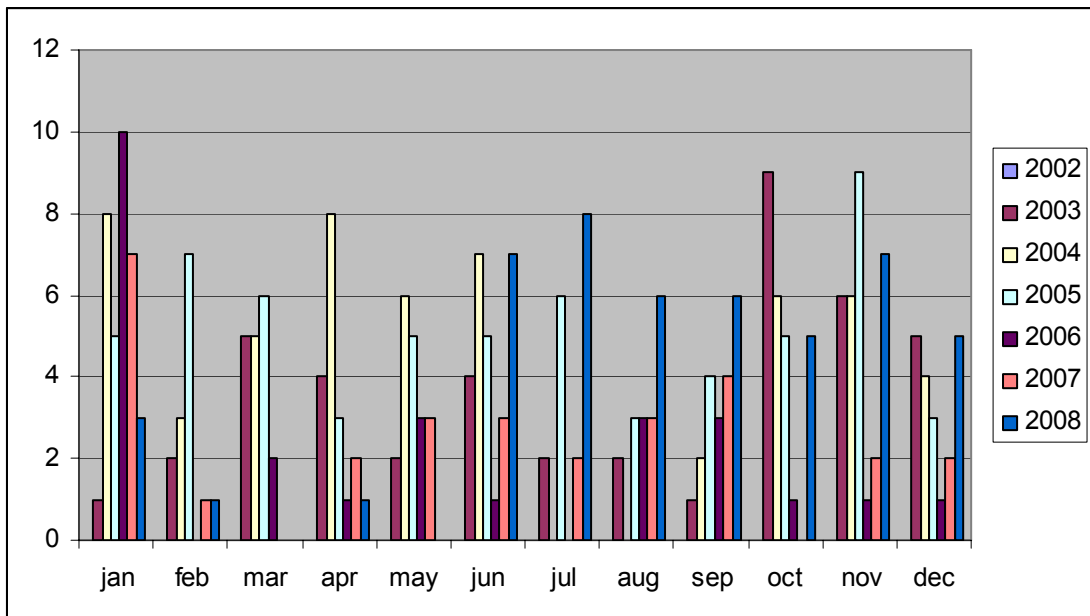


Approx.scene center : 47 15 94 47

### Global monitoring



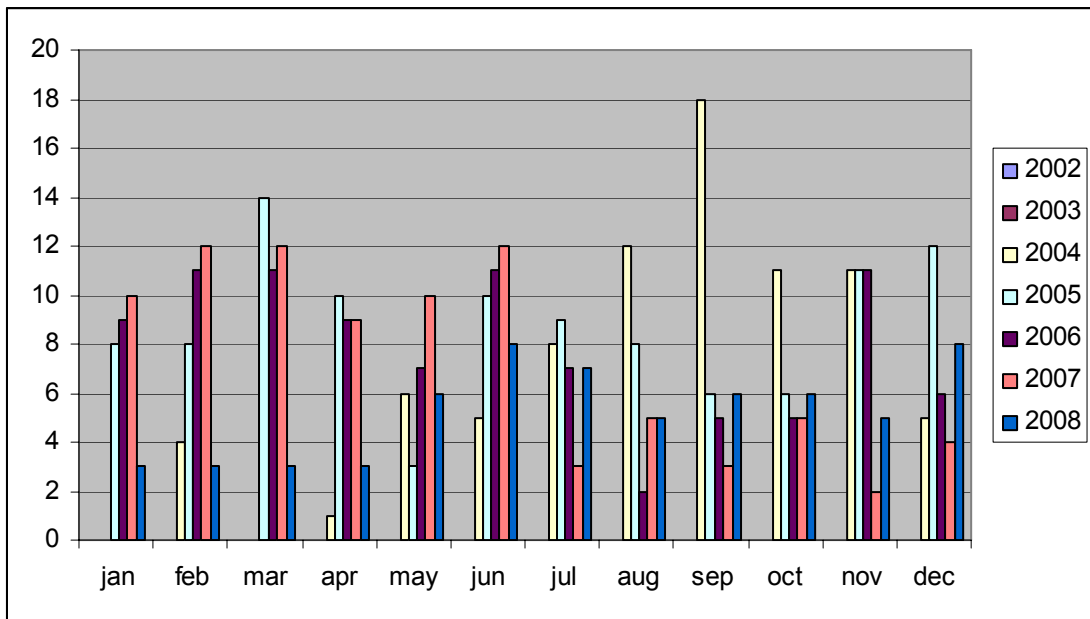
### Wide Swath



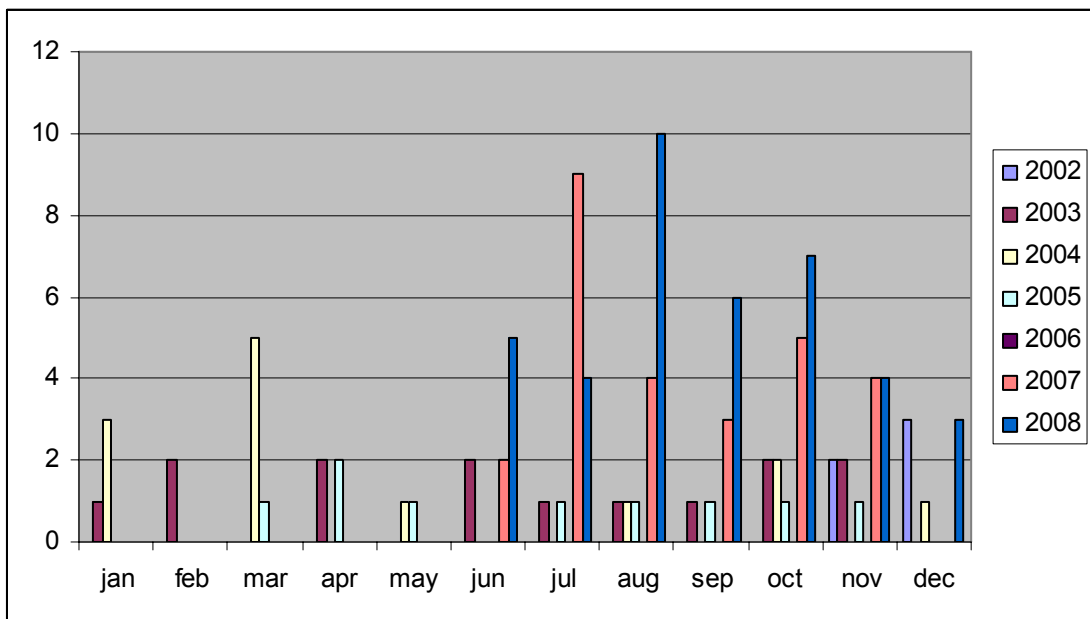


Approx.scene center : 38 53 77 01

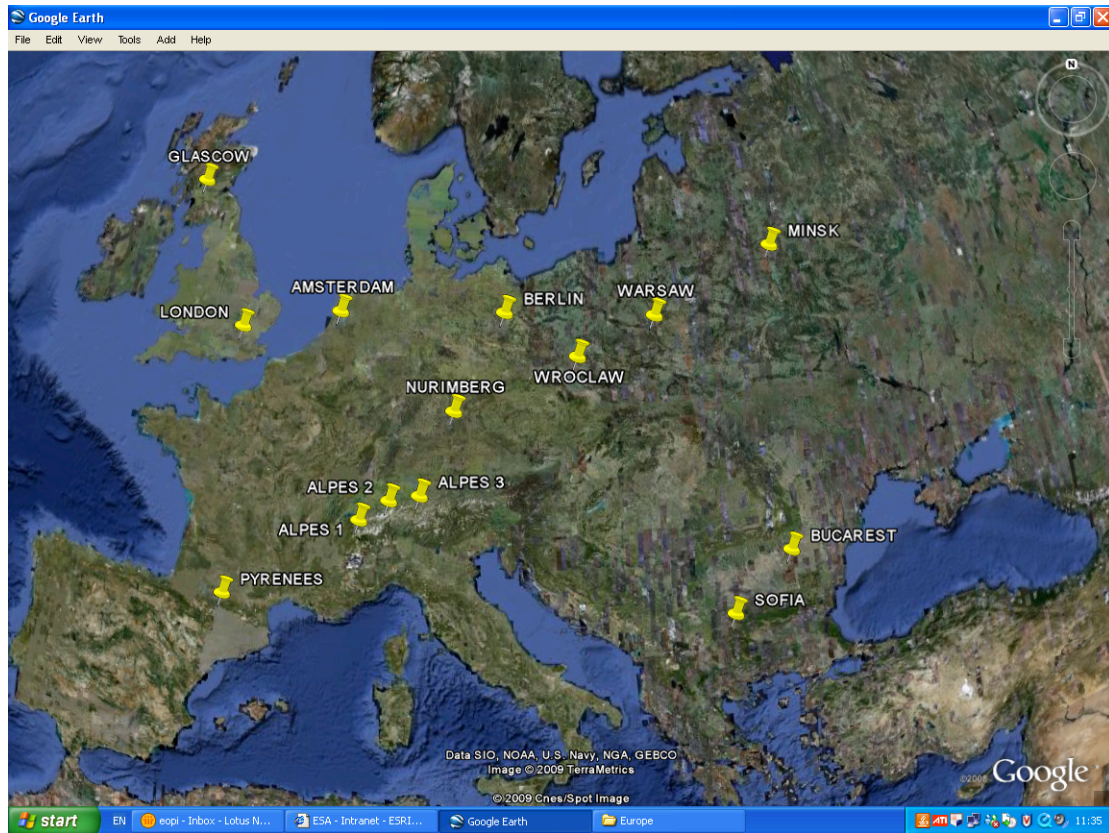
### Global monitoring



### Wide Swath

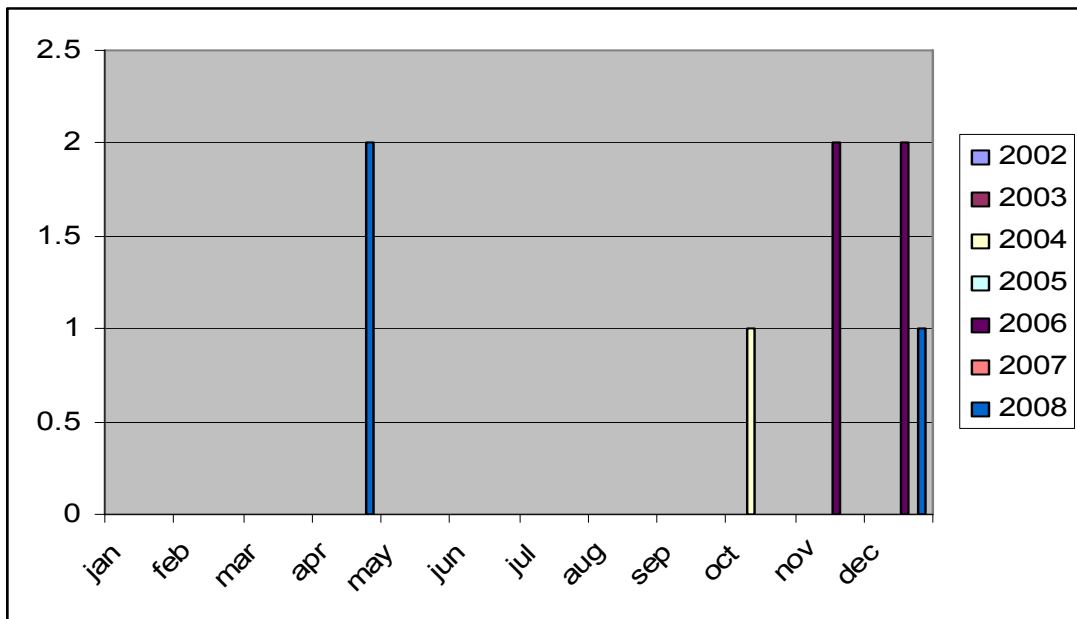


# EUROPE

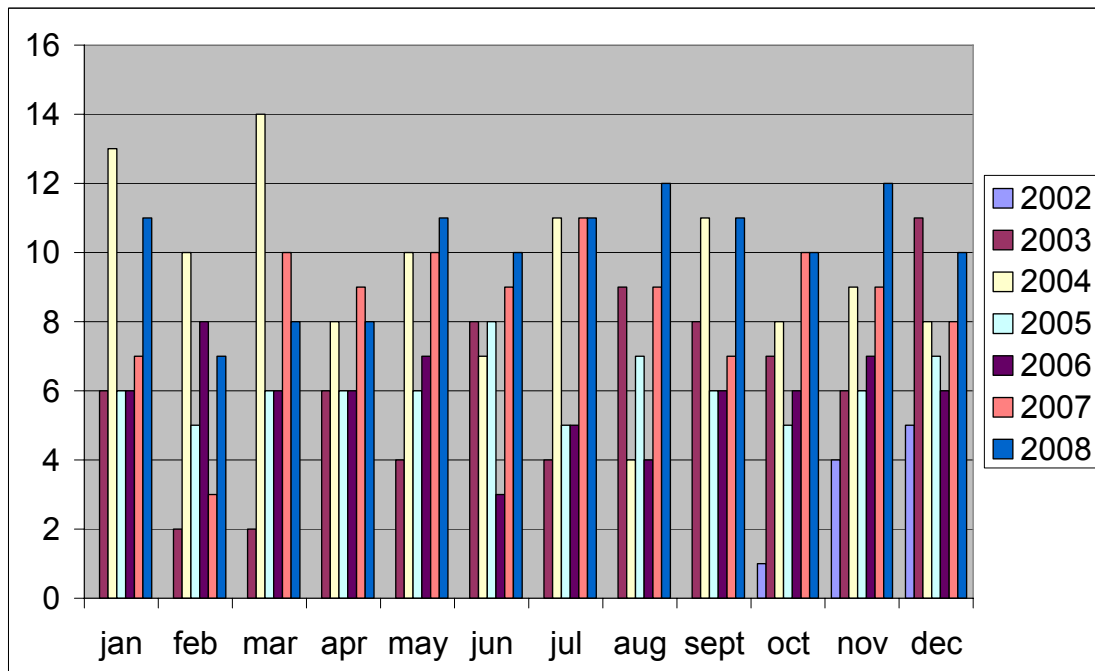


# Amsterdam

## Global Monitoring

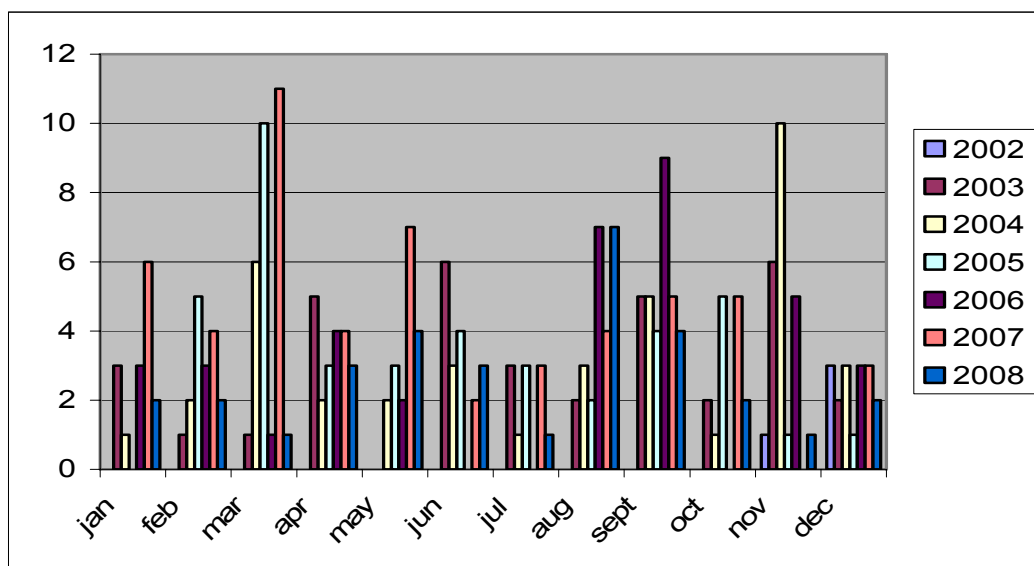


## Wide Swath

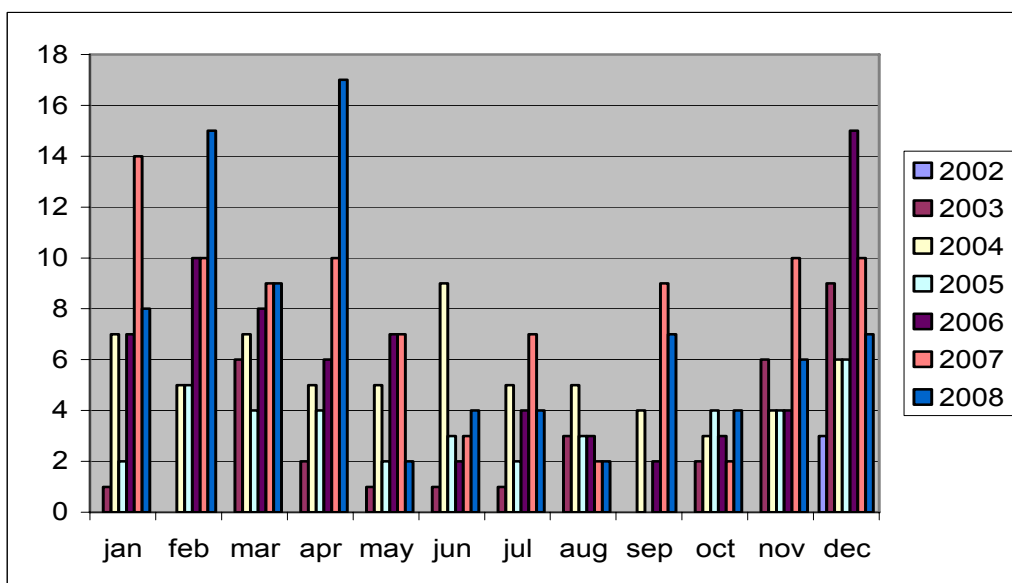


# Berlin

## Global monitoring

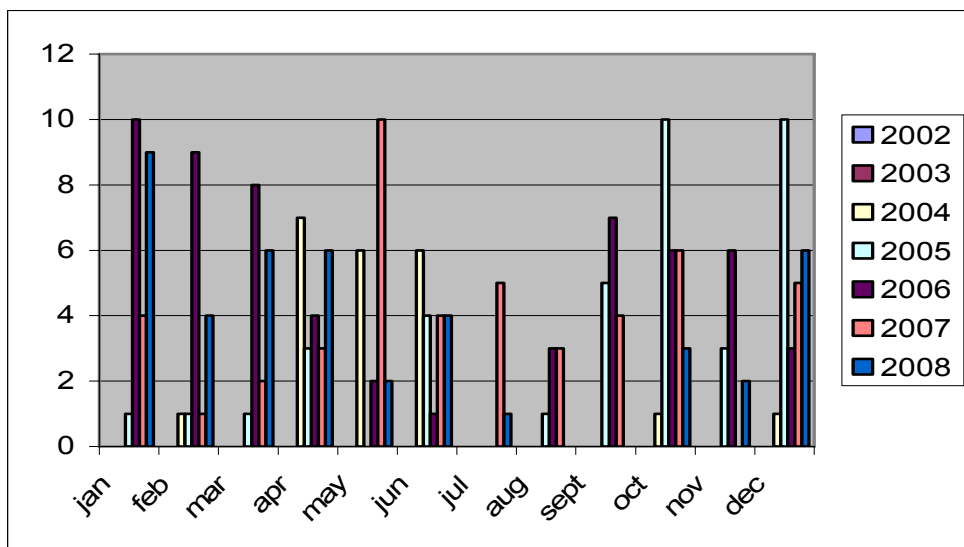


## Wide Swath

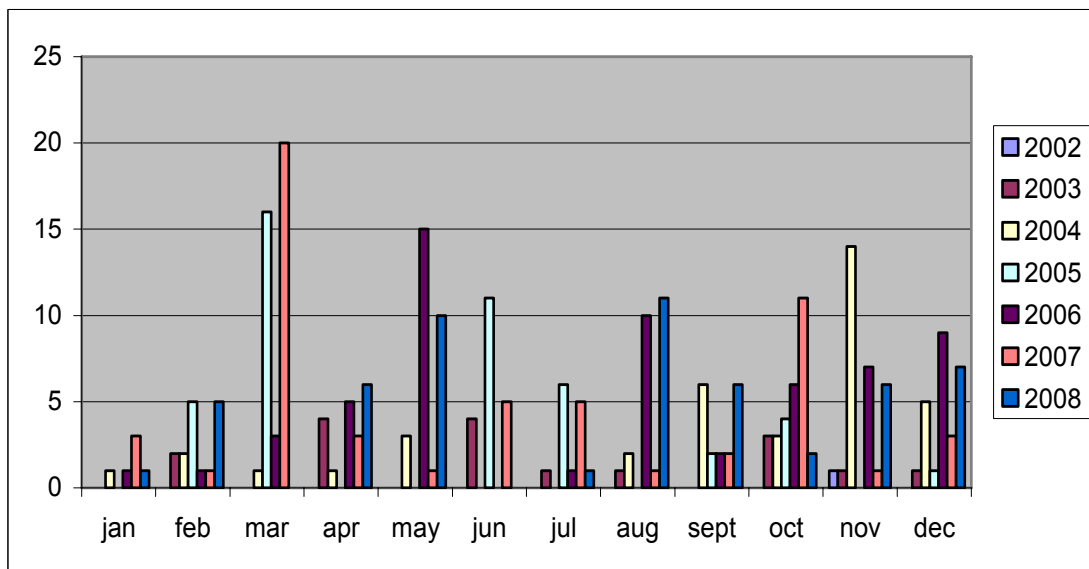


## Bucarest

Global Monitoring

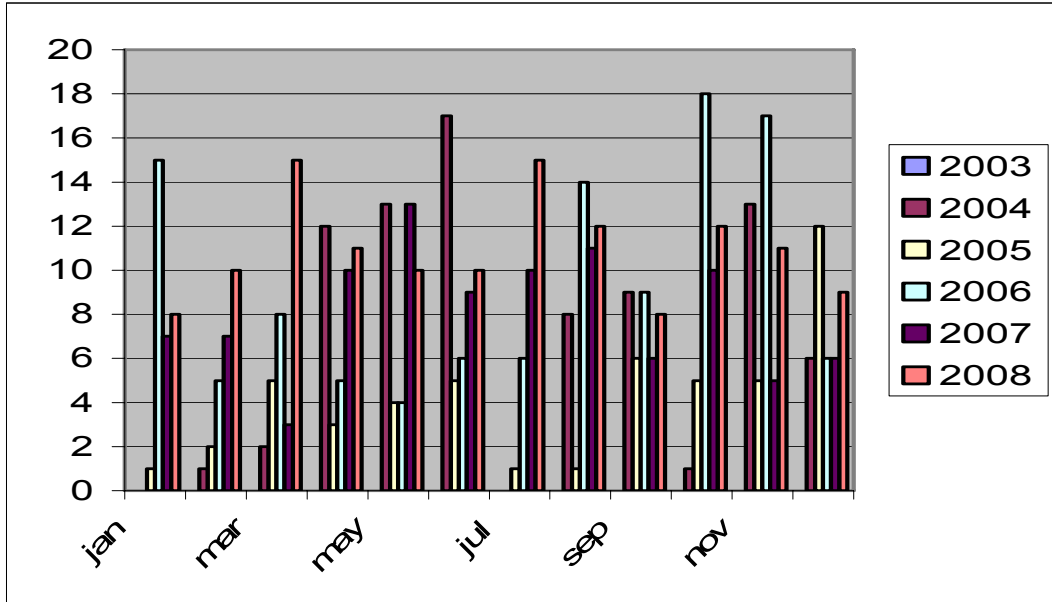


## Wide Swath

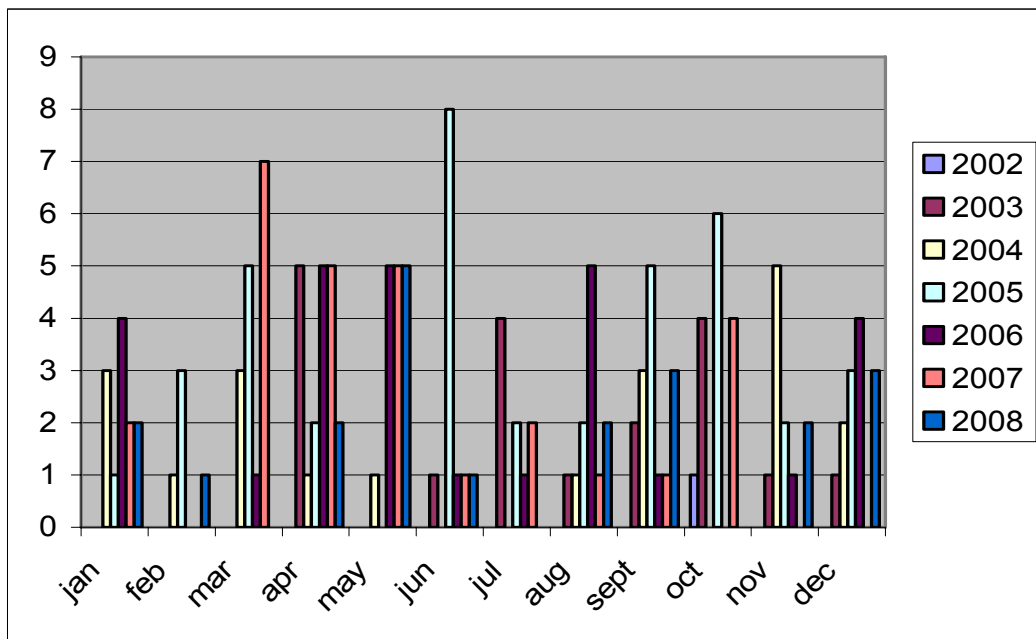


# Kiev

Global monitoring

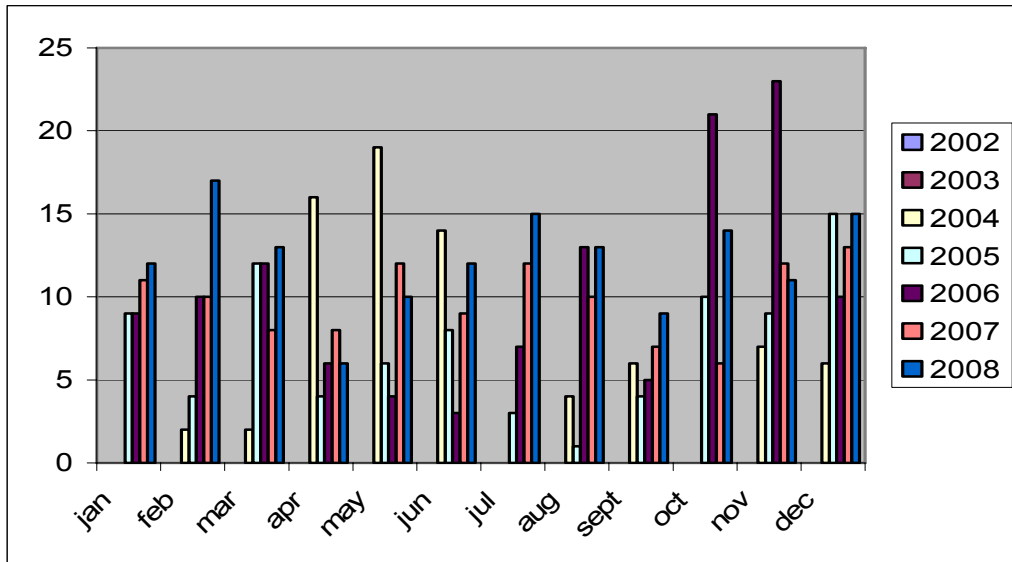


Wide Swath

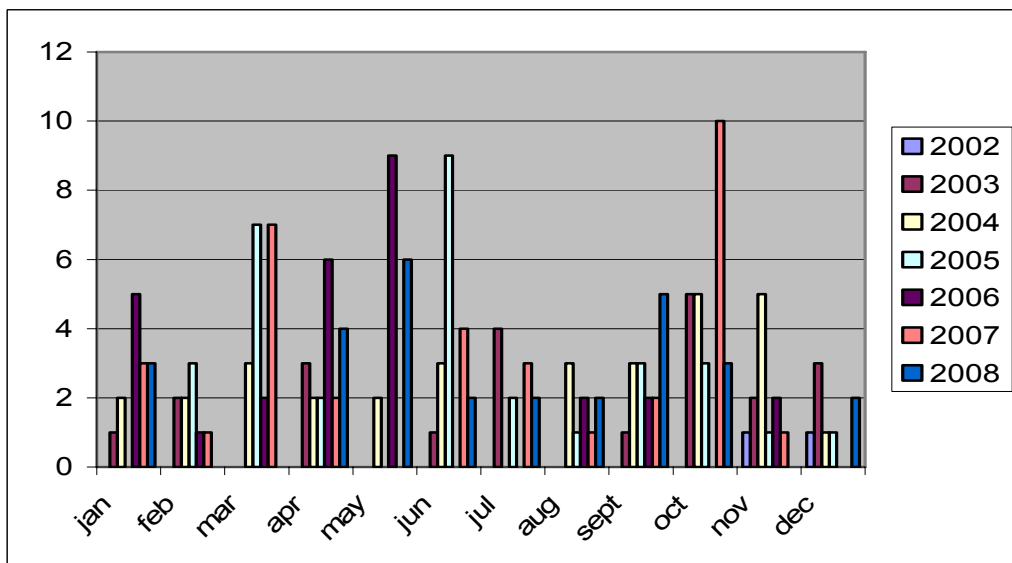


# Minsk

Global Monitoring

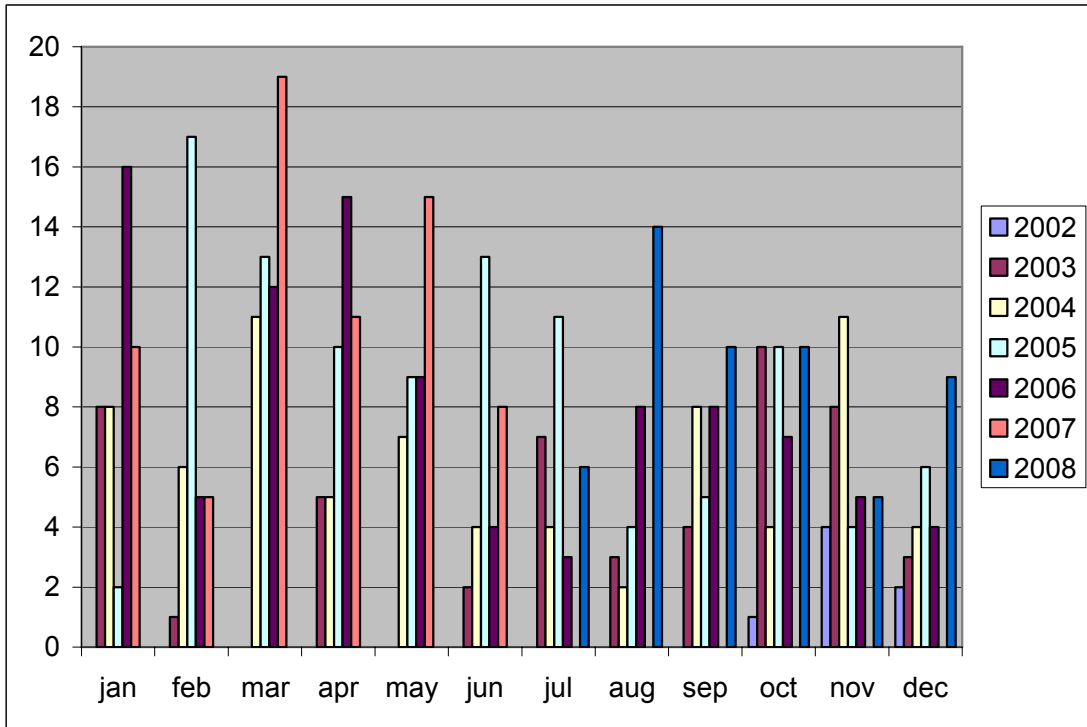


# Wide Swath

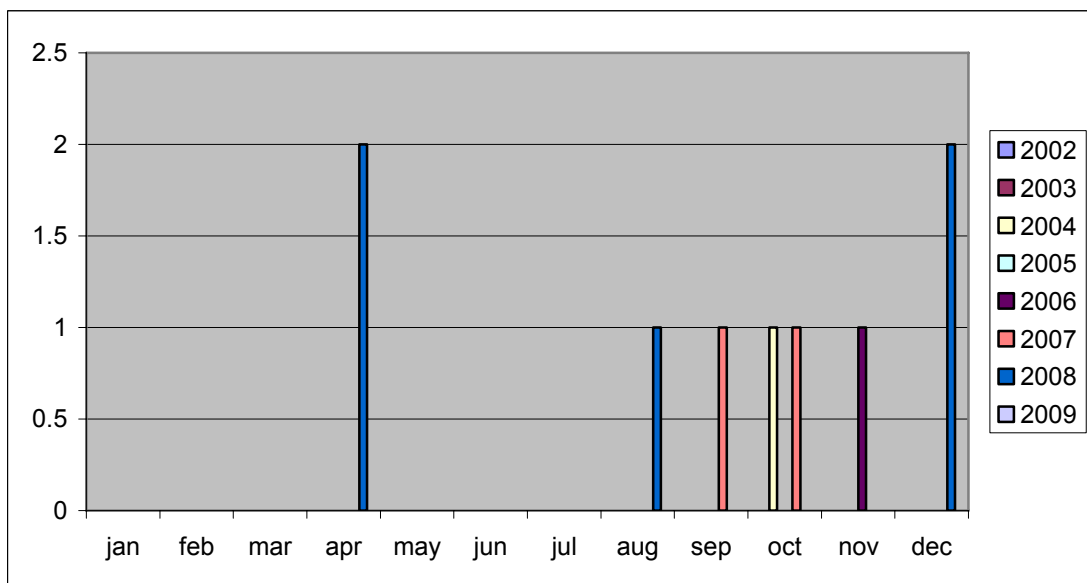


# London

## Global Monitoring



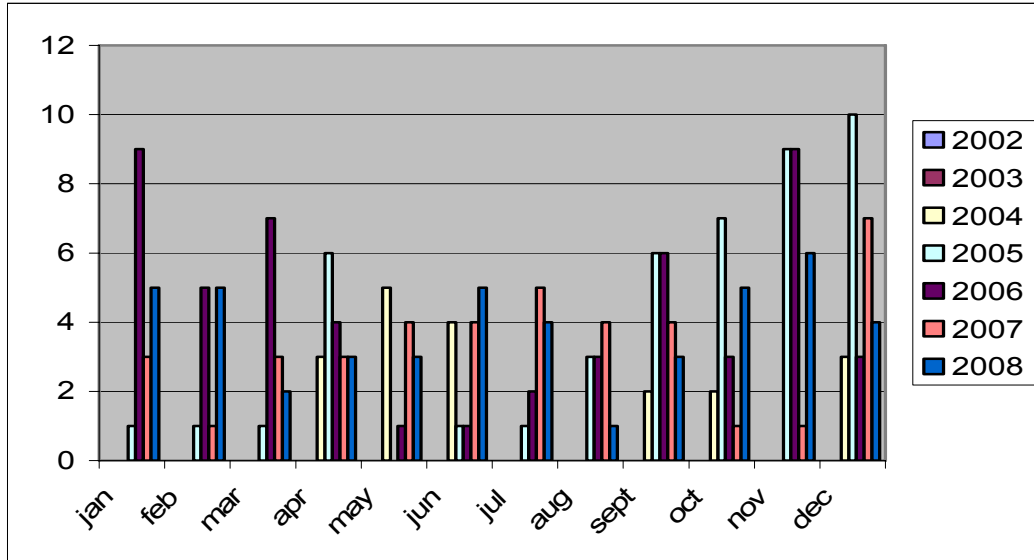
## Wide Swath



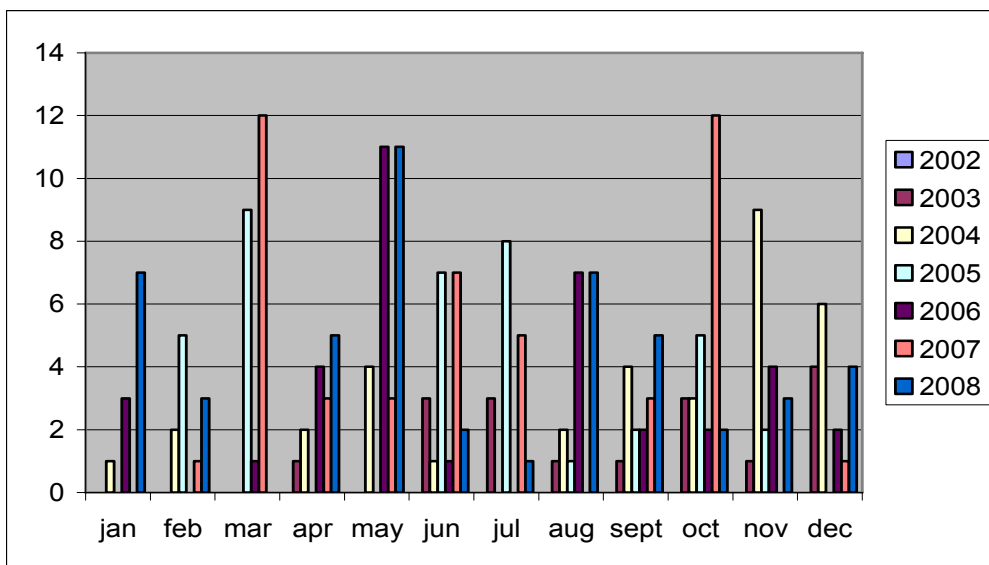


# Sofia

Global monitoring

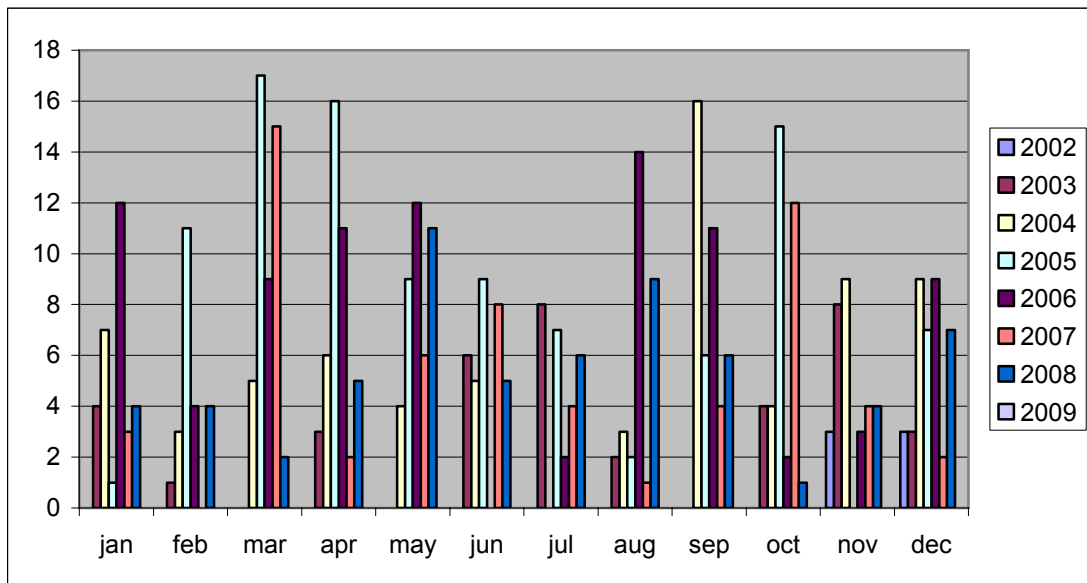


# Wide Swath



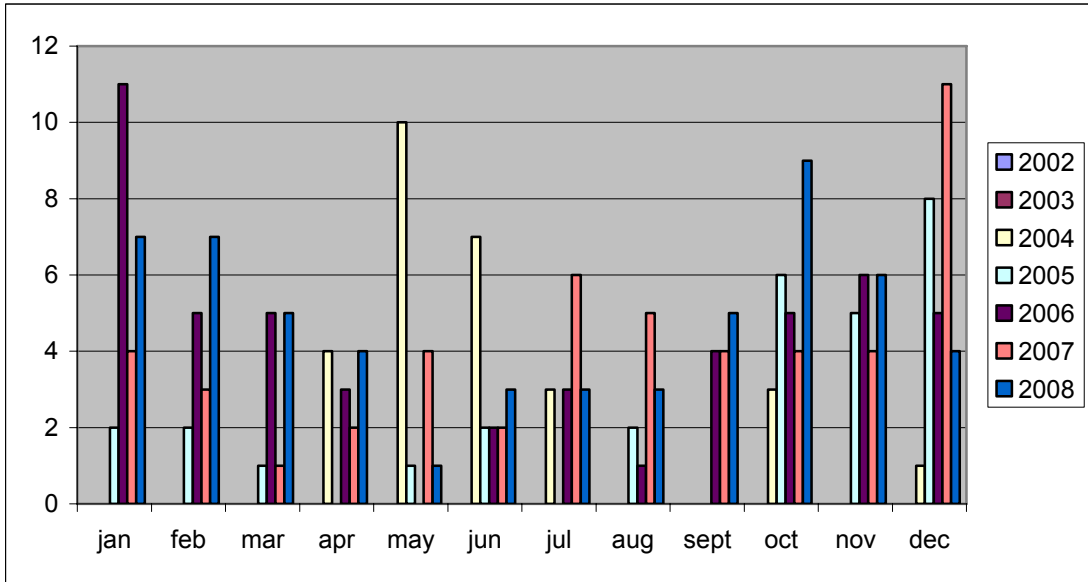
# Glascow

Wide Swath

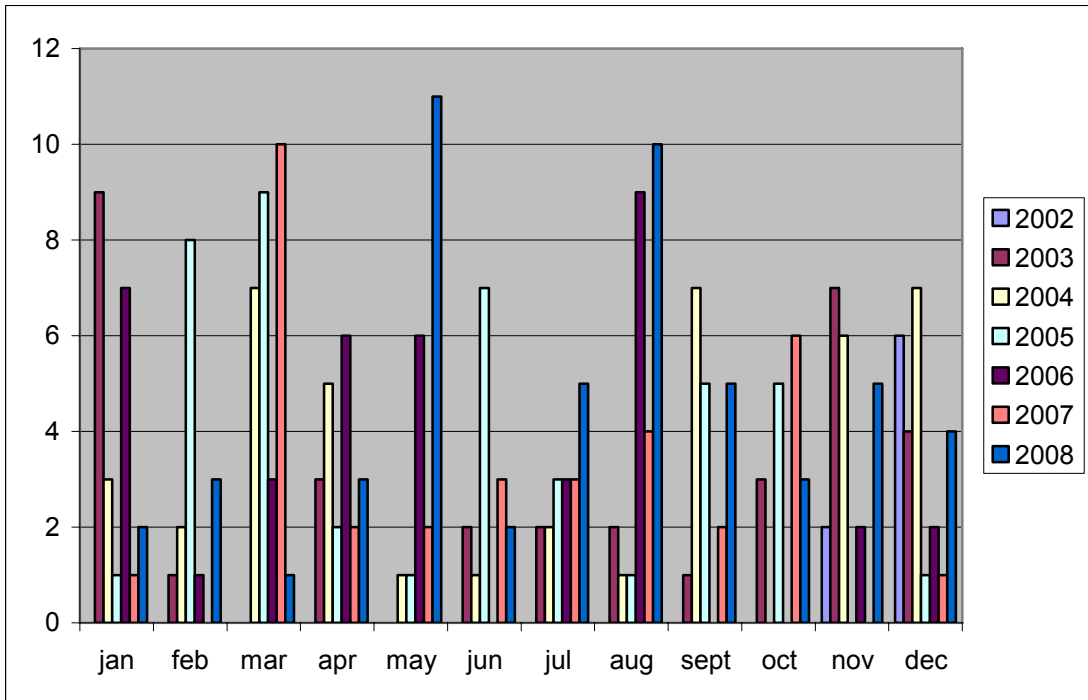


# Warsaw

## Global Monitoring

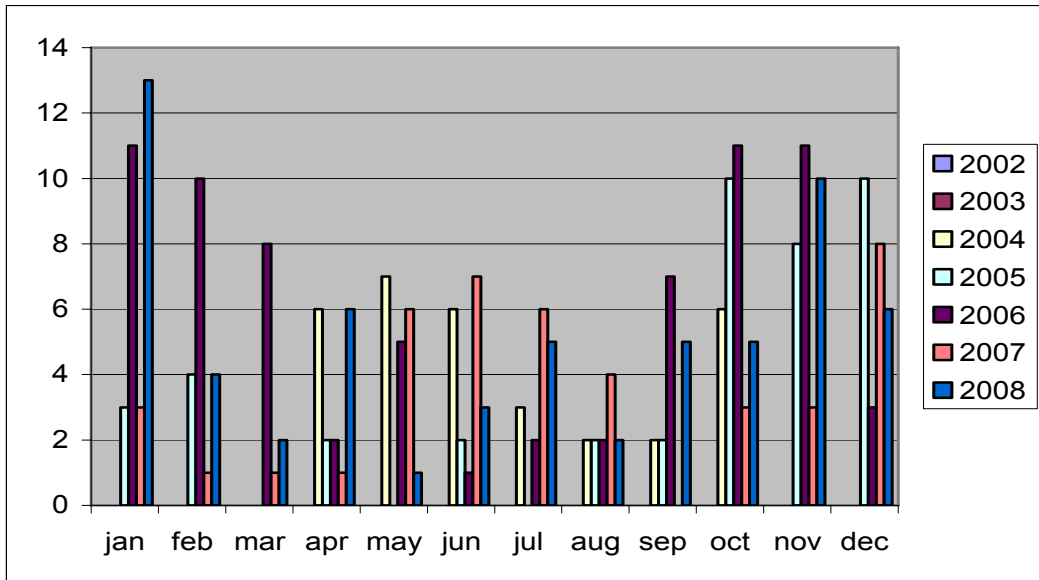


## Wide Swath

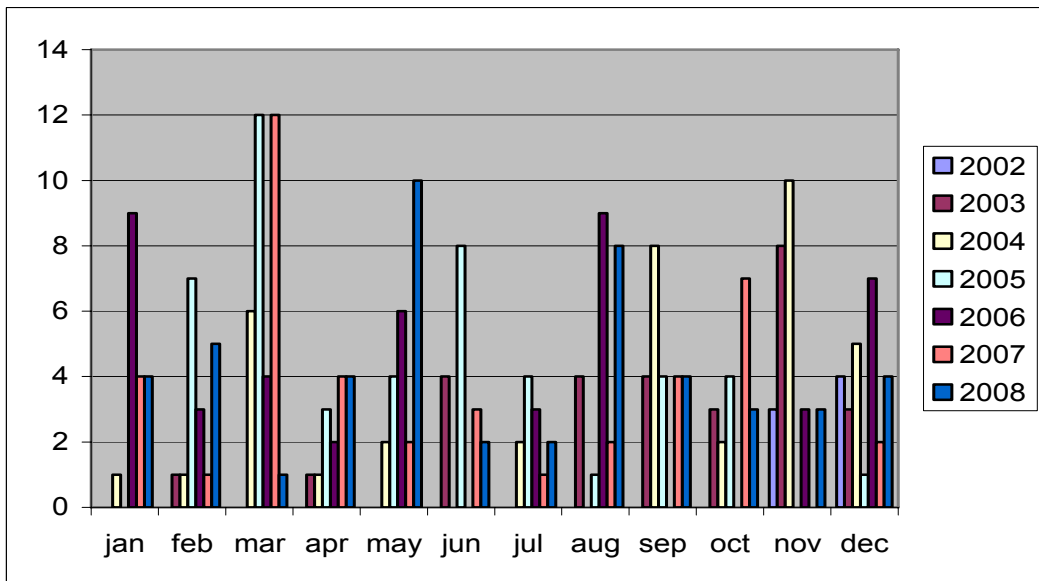


# Wroclaw

## Global Monitoring

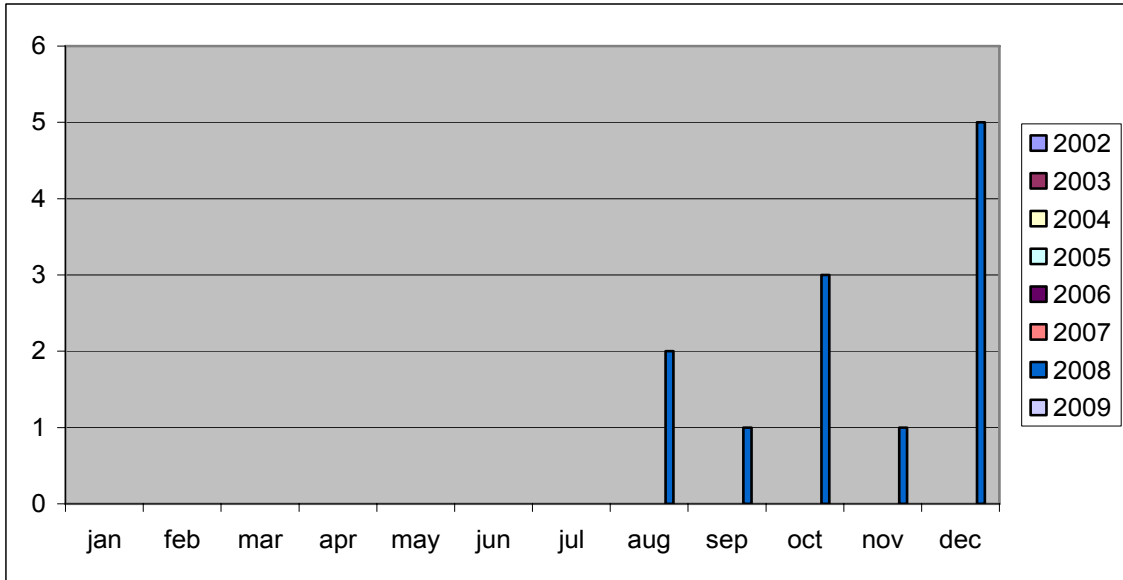


## Wide Swath

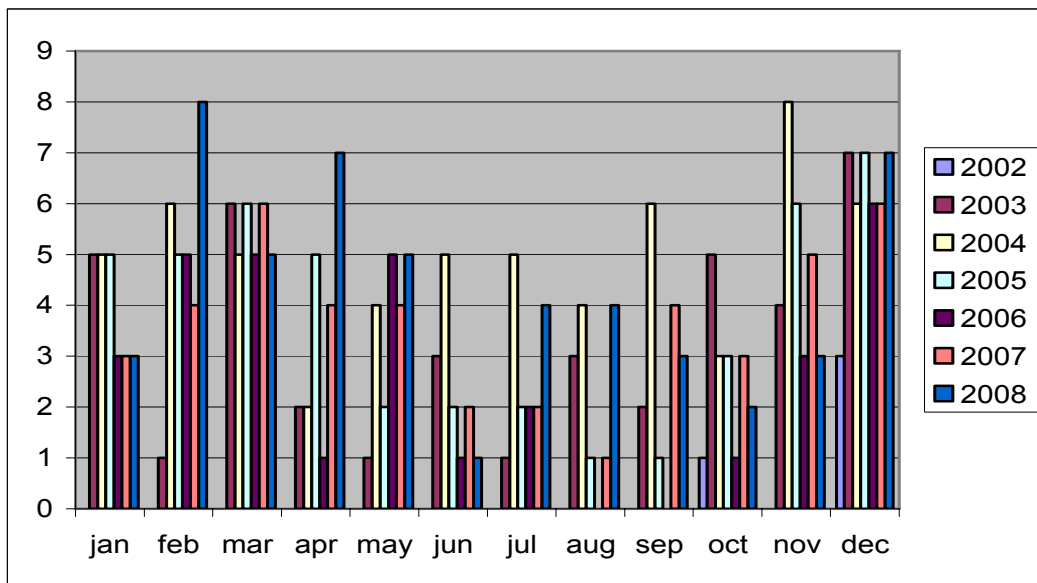


# Nurimberg

Global Monitoring



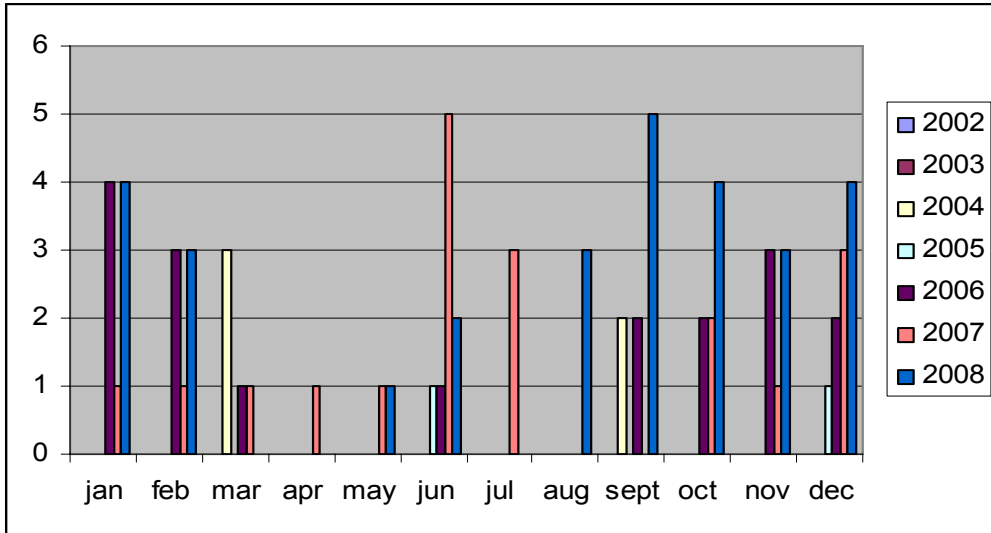
Wide Swath



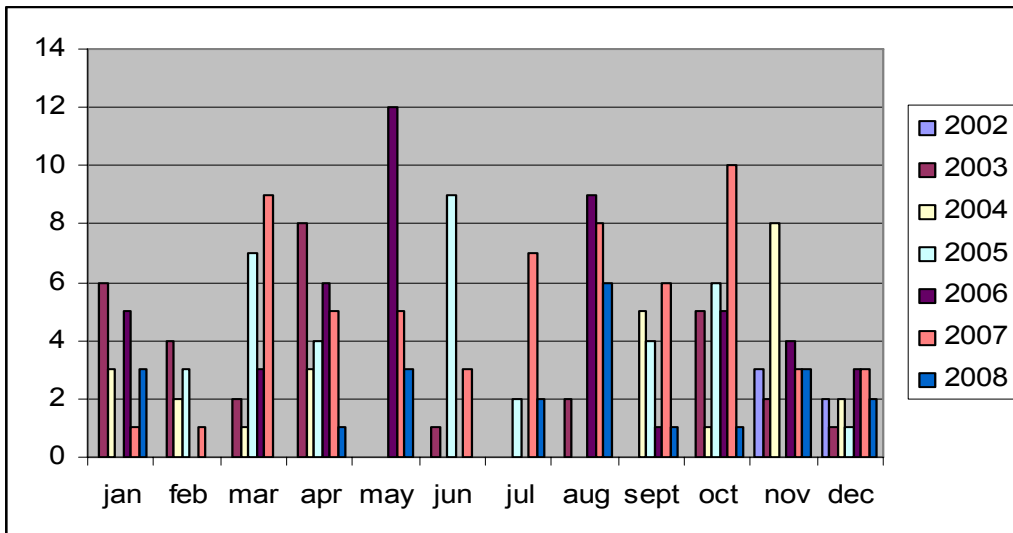
# Pyrenees

Approx.scene center : 42 54 0.25

## Global Monitoring

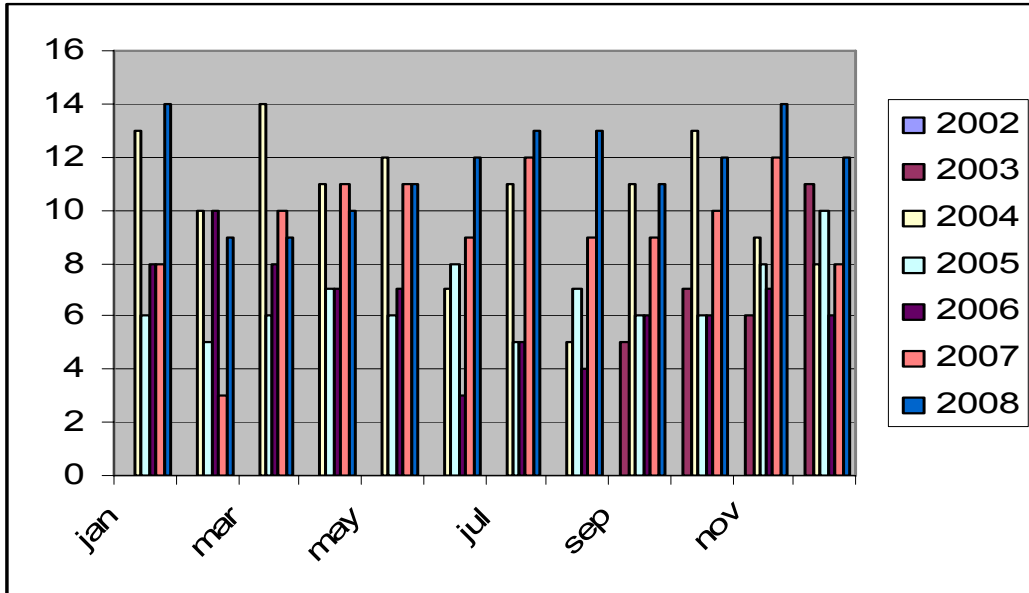


## Wide Swath

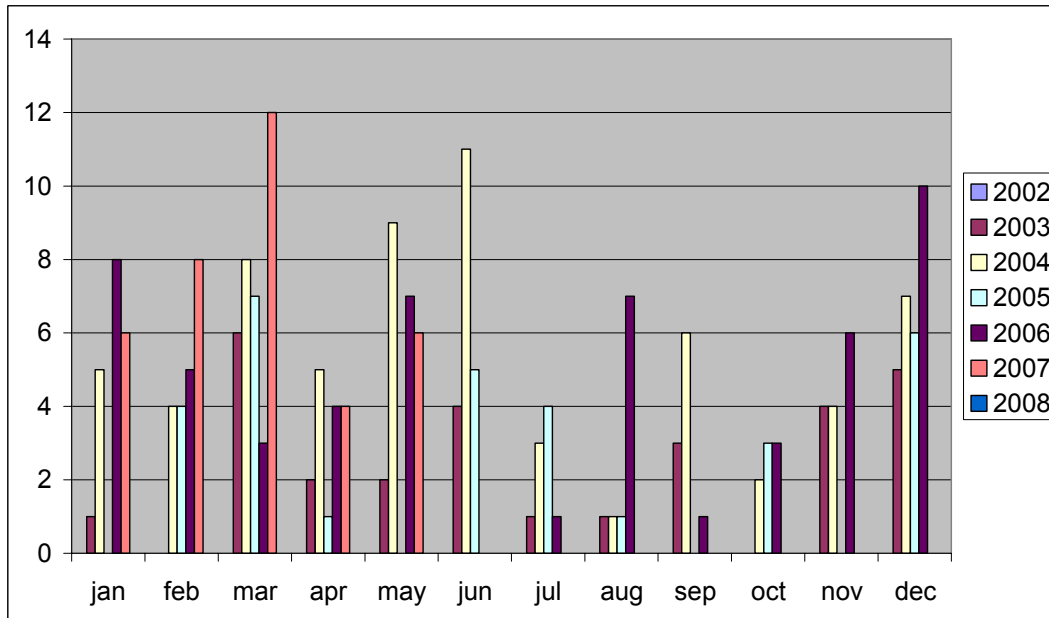


# Alpes

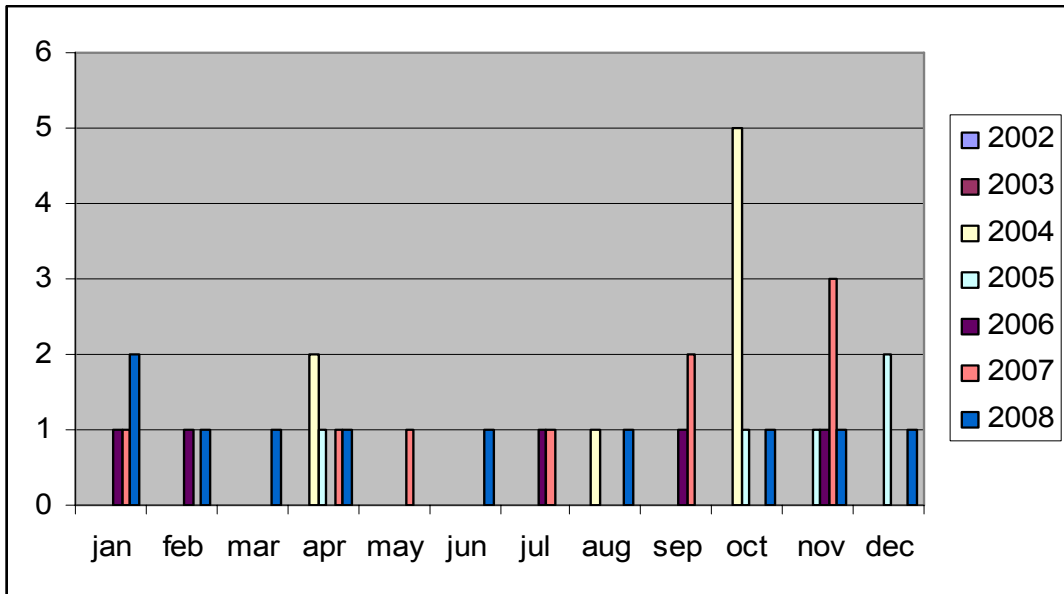
Approx.scene center : 45 55 7 00  
Global monitoring



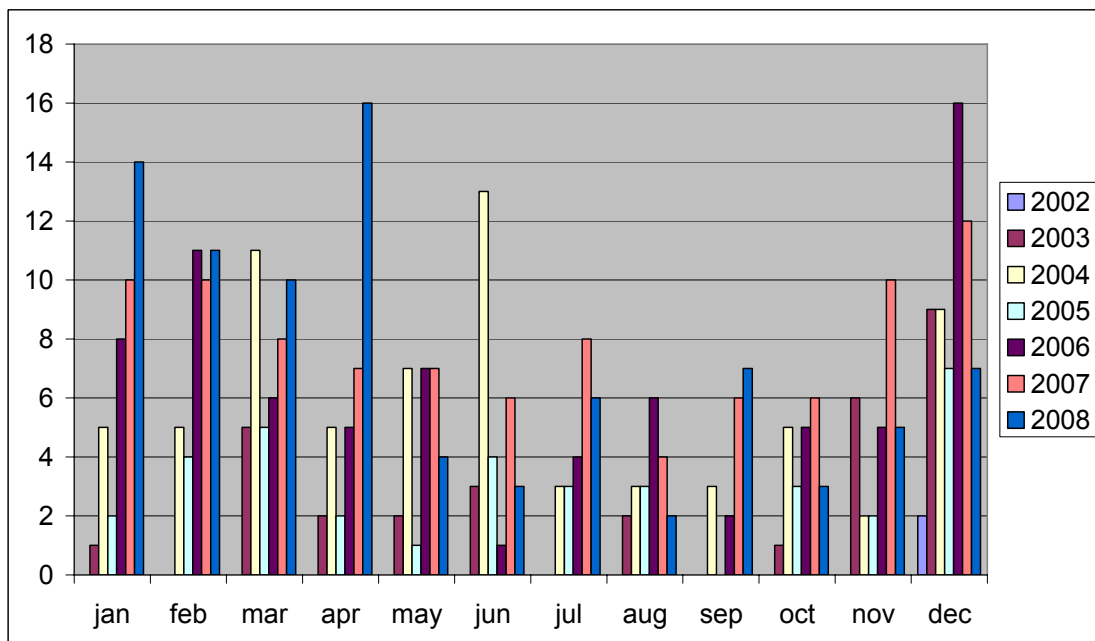
# Wide Swath



### Global monitoring



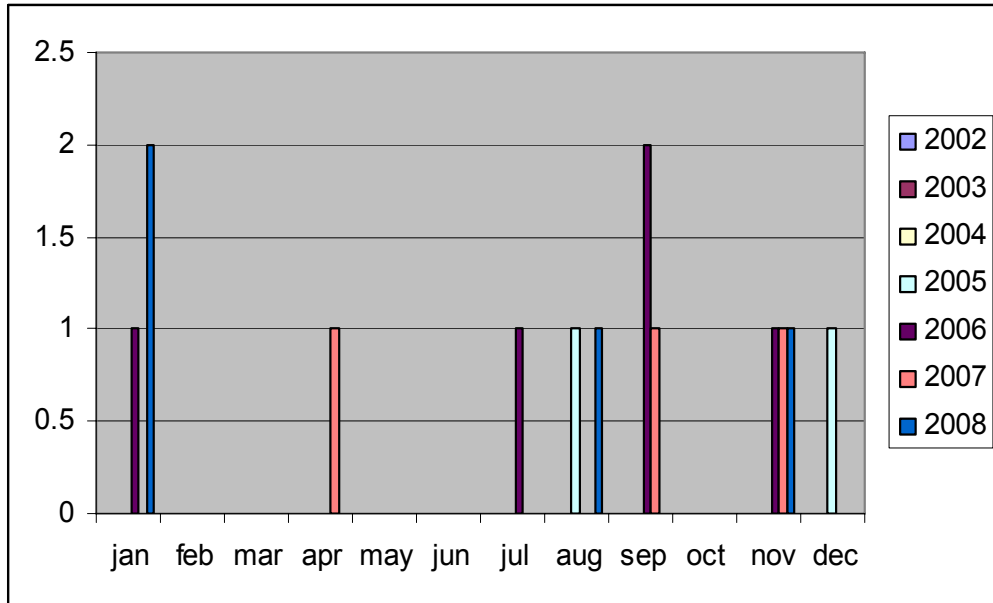
### Wide Swath





Approx.scene center : 46 36 9 20

### Global monitoring



### Wide Swath

