

# SNOW MONITORING IN NEWFOUNDLAND & LABRADOR

GlobSnow – First User Workshop  
January 12-13, 2010

**Amir Ali Khan Ph.D. & Keith Abbott**  
Government of Newfoundland & Labrador  
Department of Environment & Conservation  
Water Resources Management Division  
Hydrologic Modelling Section  
[www.env.gov.nl.ca](http://www.env.gov.nl.ca)



---

# Overview

---

- Who We Are
- Why Monitor Snow?
- Product Review
- Path Forward

---

# WHO WE ARE

---

# Newfoundland & Labrador

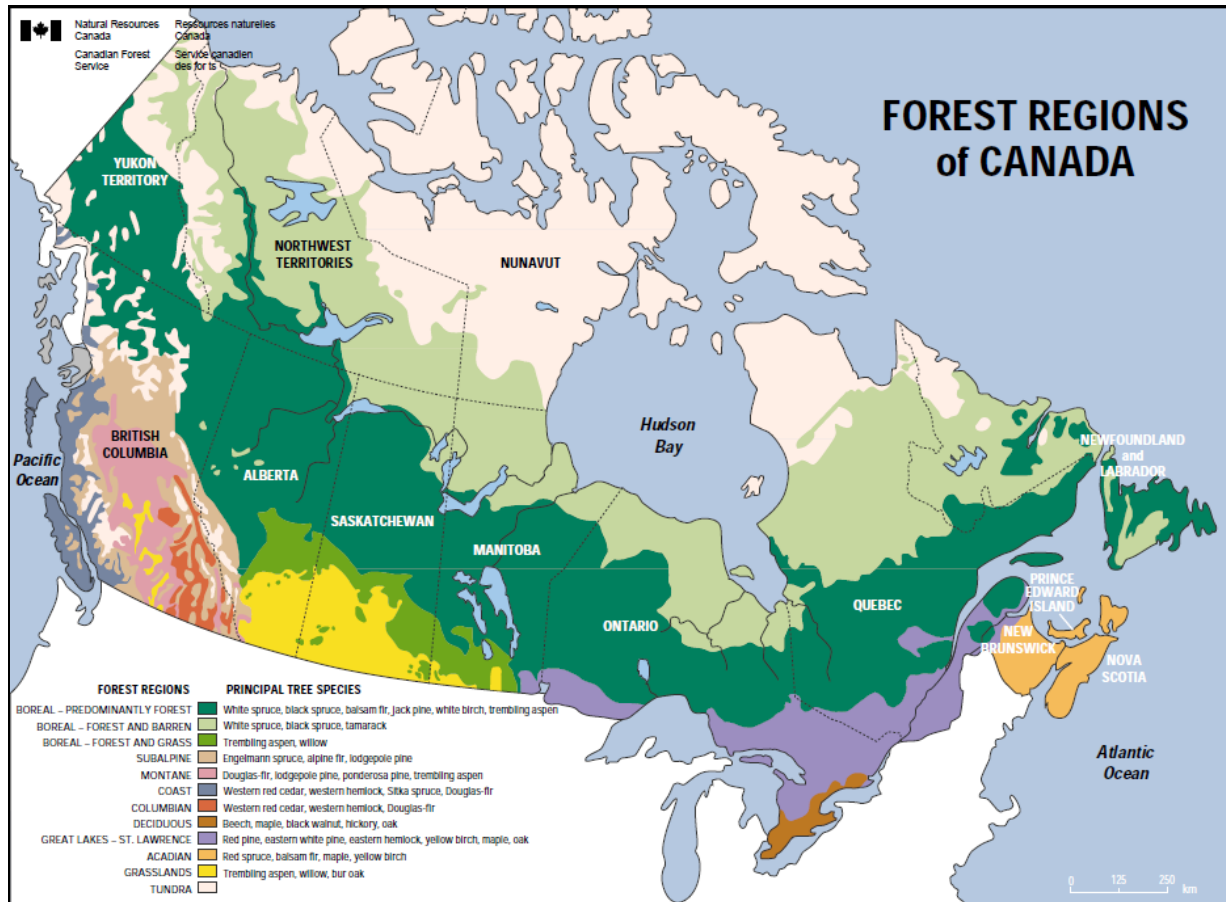


# Newfoundland & Labrador

- Land mass 405,720 km<sup>2</sup>
  - Newfoundland 111,390 km<sup>2</sup>
  - Labrador 294,330 km<sup>2</sup>
- ~ 1.2 times the size of Finland.
- ~ 1.8 times the size of Great Britain.



# Newfoundland & Labrador



---

# WHY MONITOR SNOW?

---

# Snowfall Amounts

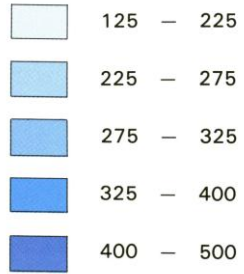


Trans-Labrador Highway (2003)

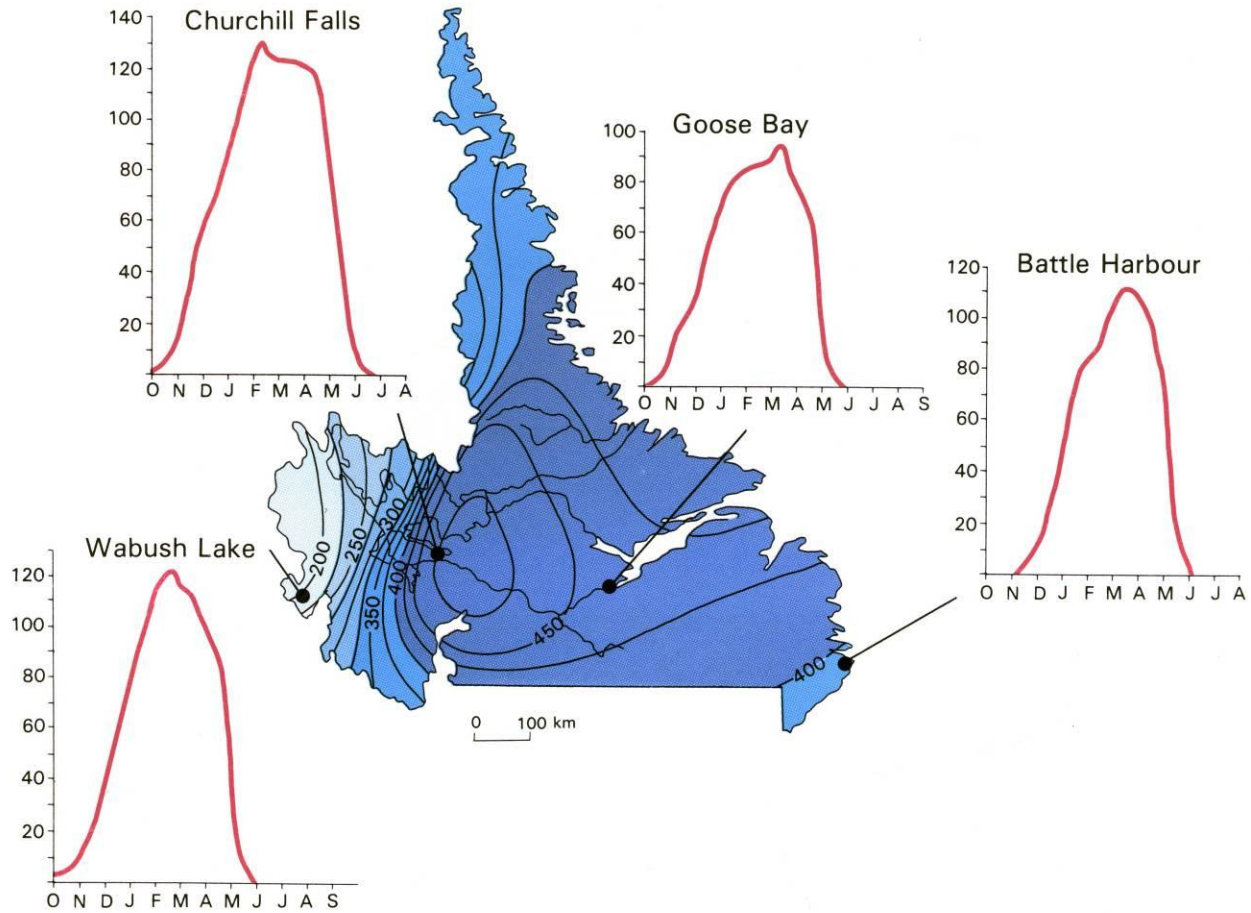


# Snowfall Amounts

Mean Annual Snowfall  
in centimeters

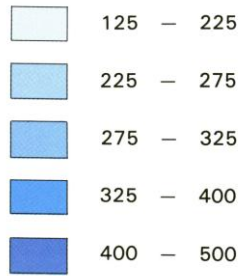


Contour interval = 25 cm

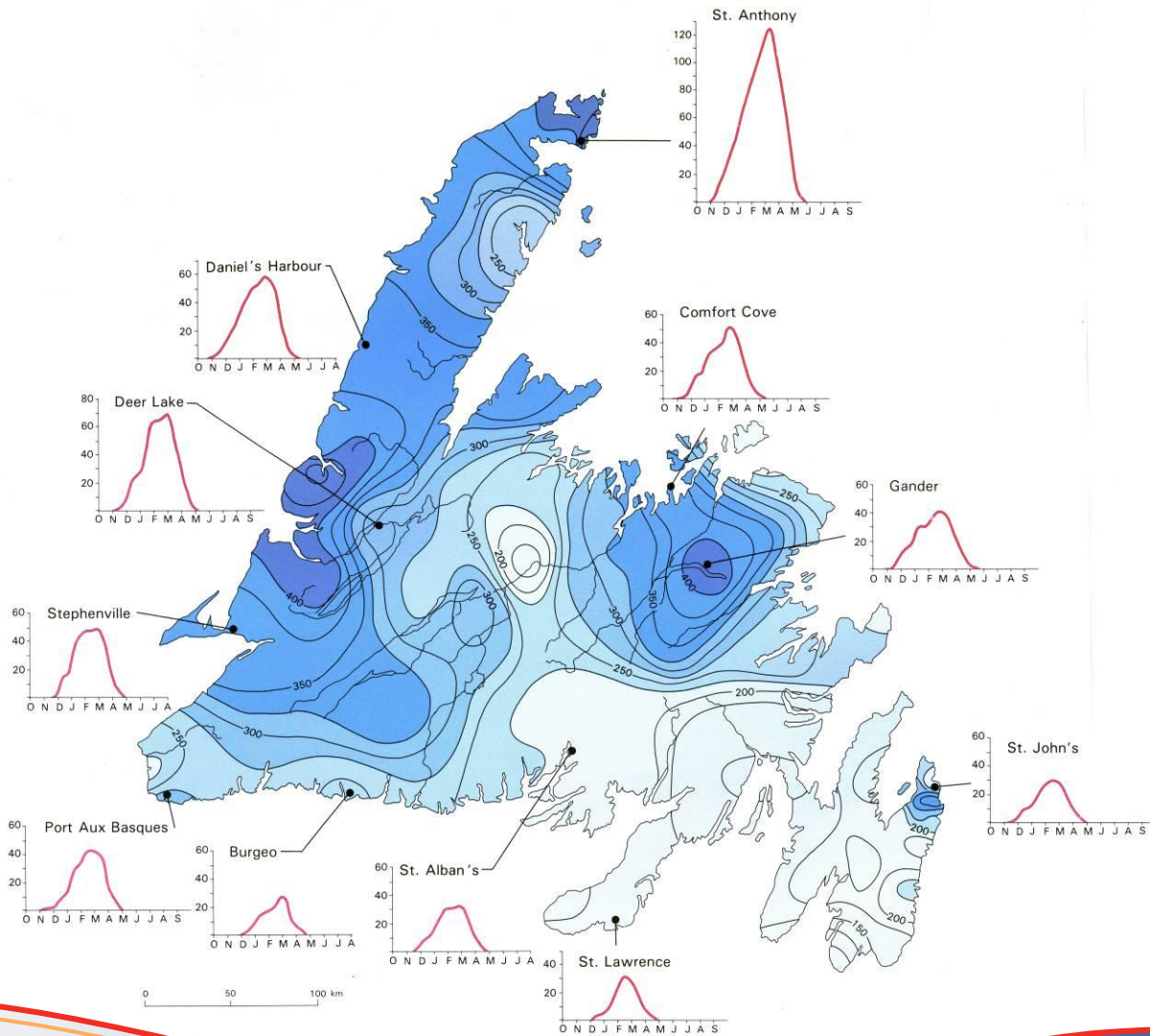


# Snowfall Amounts

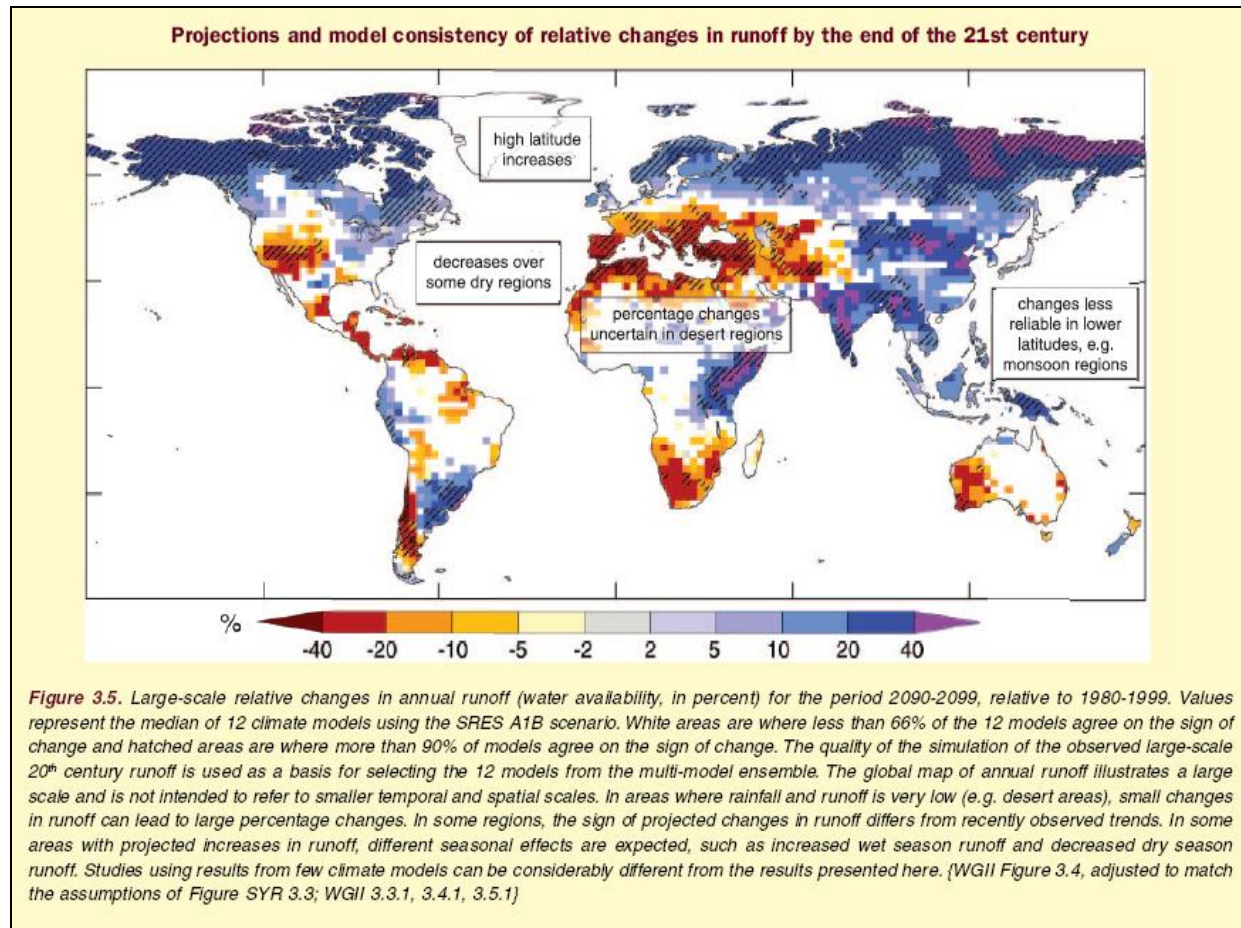
Mean Annual Snowfall  
in centimeters



Contour interval = 25 cm

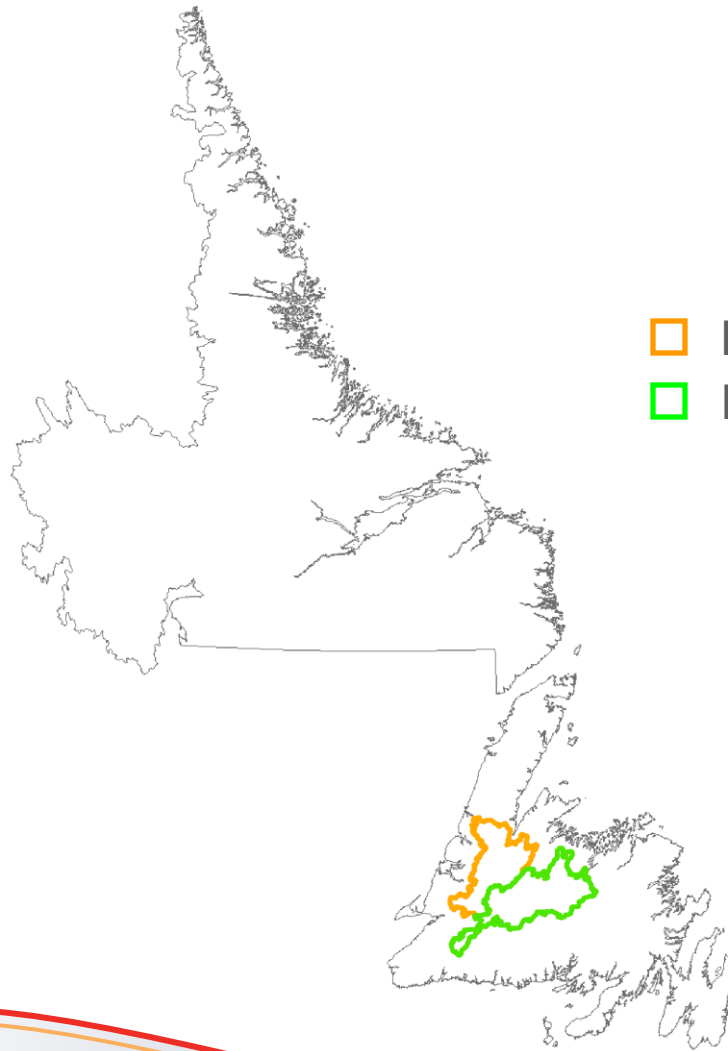


# Climate Change Adaptation



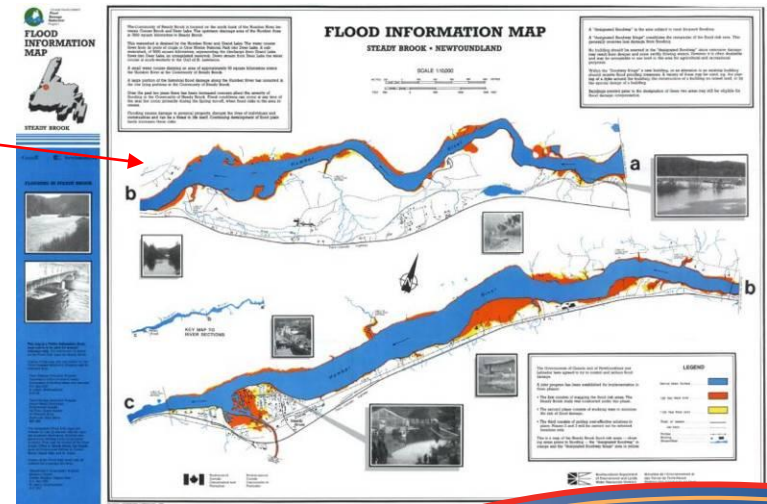
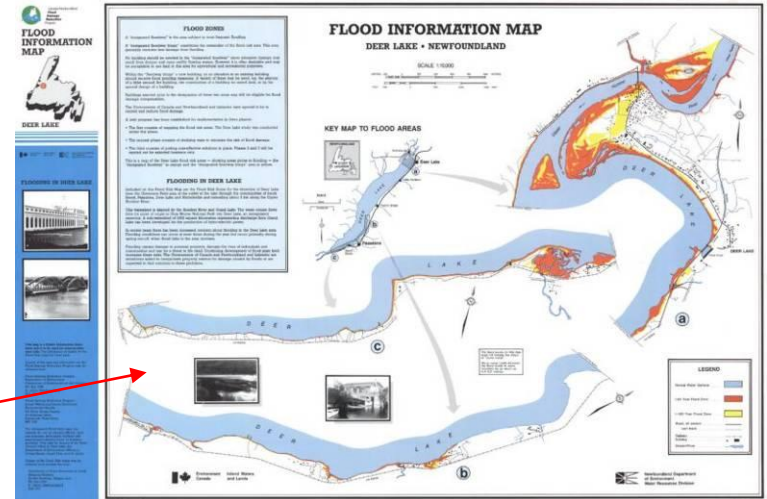
Taken from Synthesis Report, IPCC Fourth Assessment Report April 2007

# Flood Forecasting

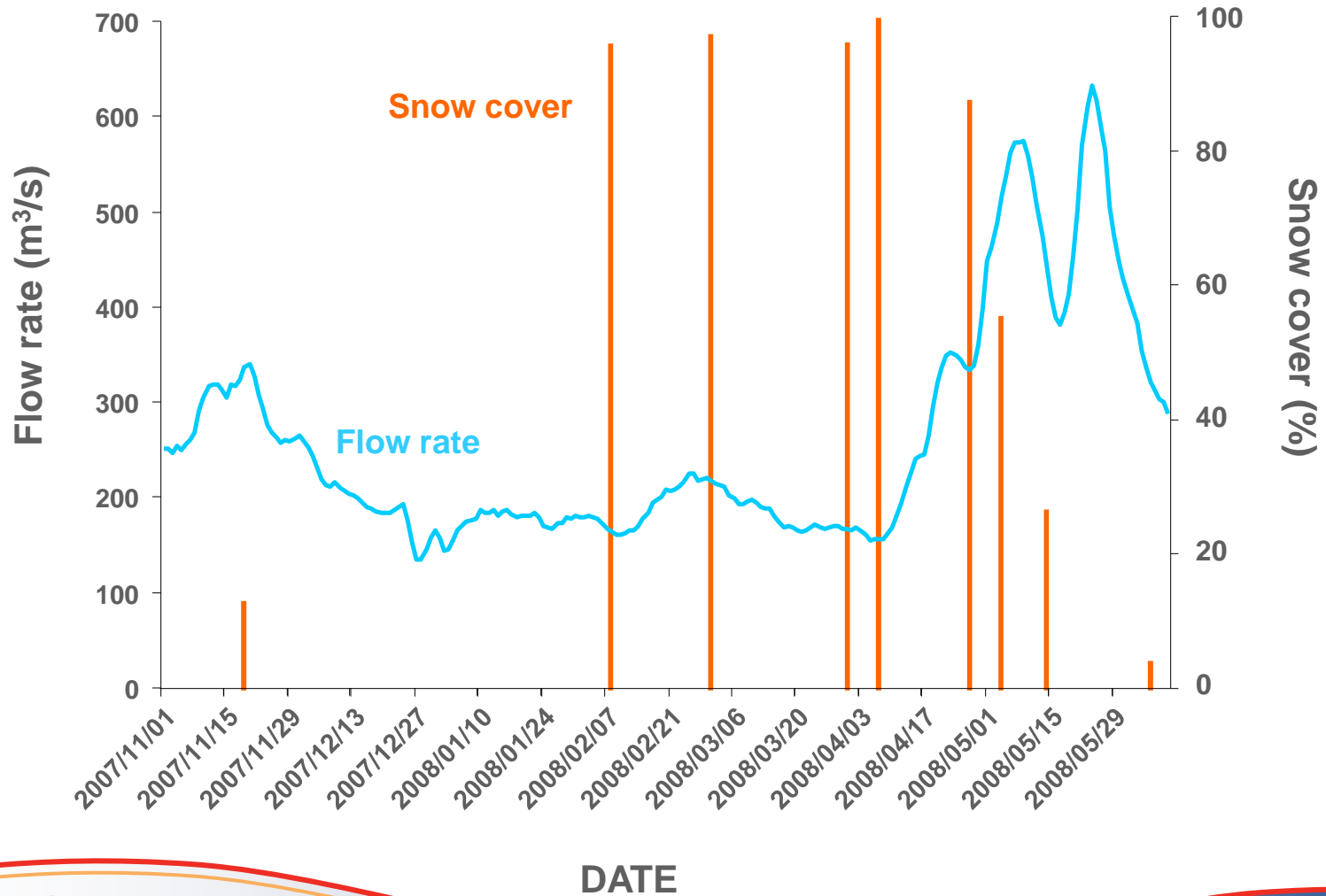


- Humber River Watershed
- Exploits River Watershed

# Flood Forecasting

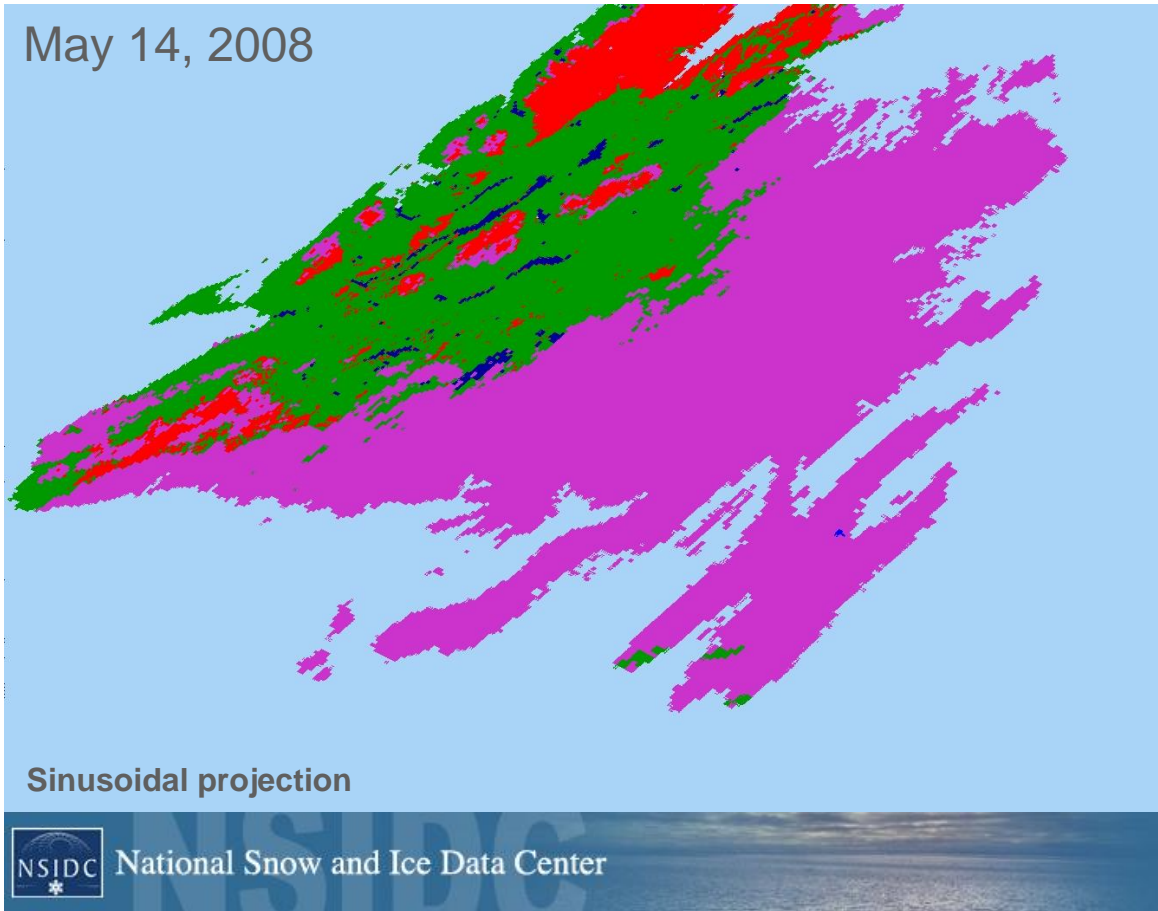


# Flood Forecasting



# NSIDC – Snow Extent

May 14, 2008



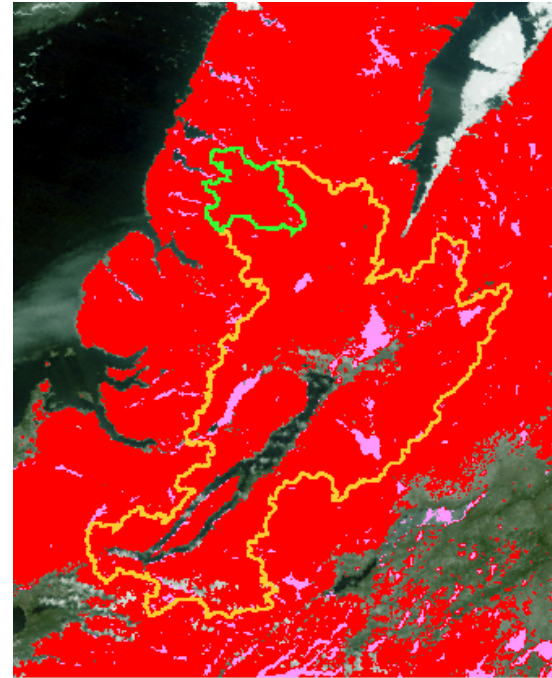
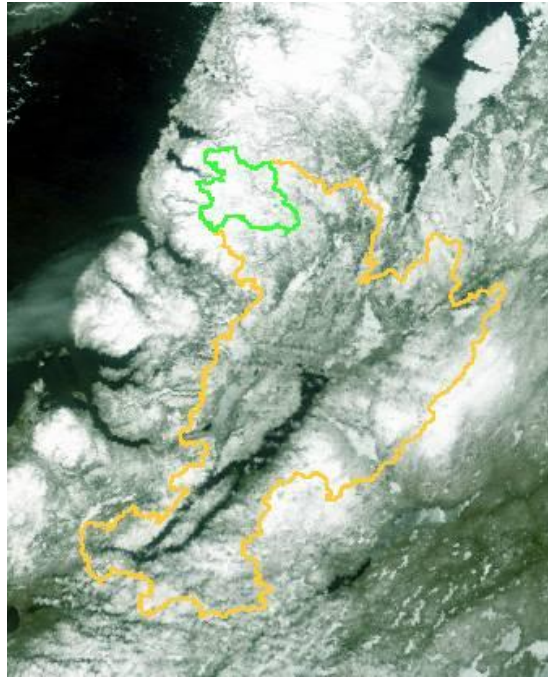
-  No Snow (DN = 25)
-  Lake (DN = 37)
-  Ocean (DN = 39)
-  Cloud (DN = 50)
-  Lake ice (DN = 100)
-  Snow (DN = 200)



Sinusoidal projection





National Snow and Ice Data Center

# WRMD – Snow Extent

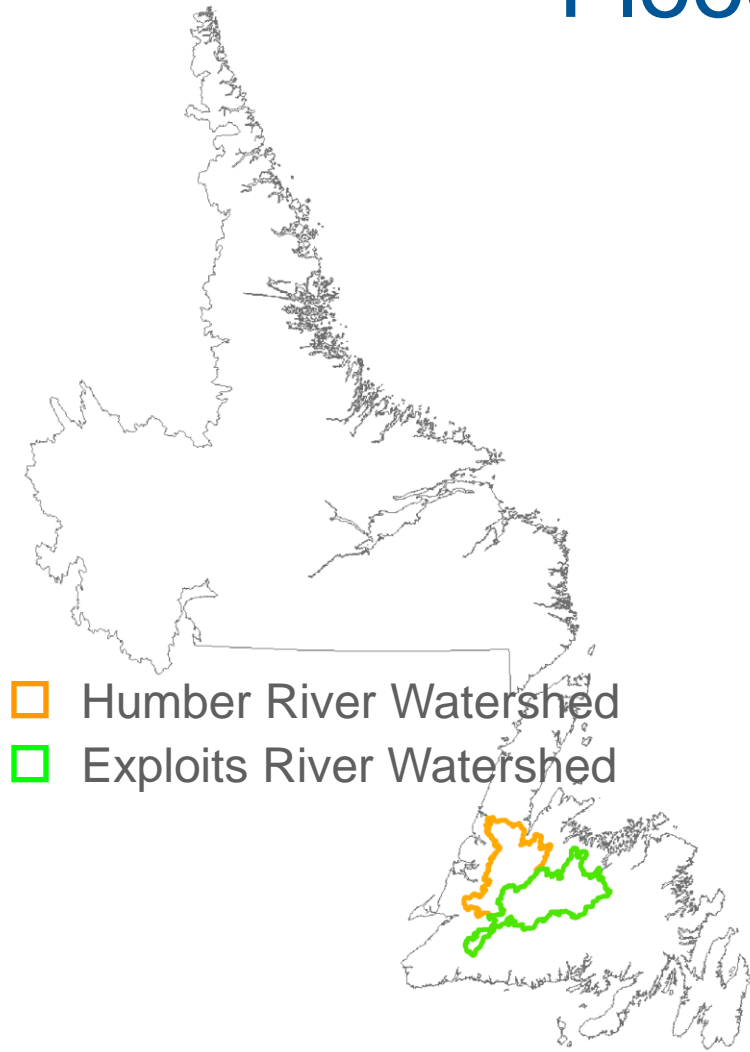


-  Upper Humber River Watershed
-  Greater Humber River Watershed

-  Snow on land
-  Snow on ice

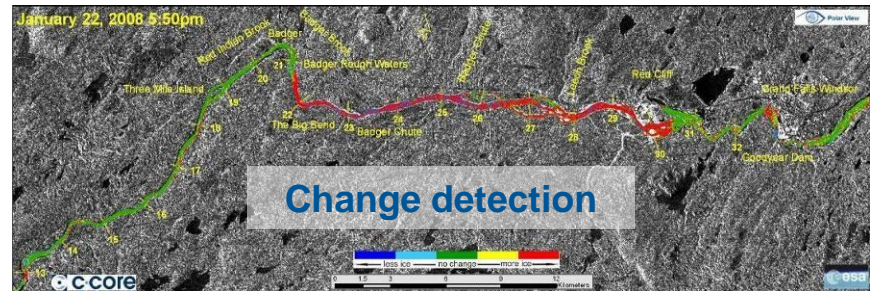
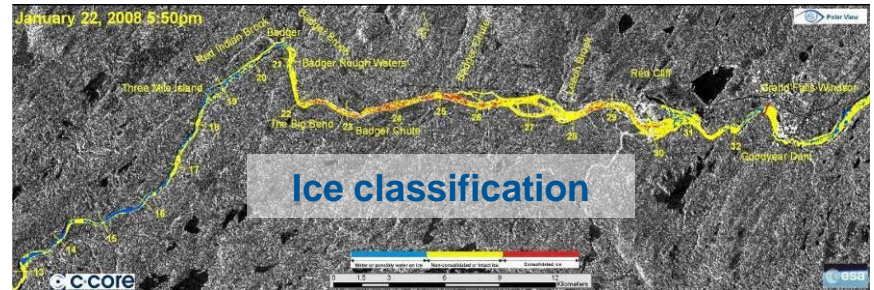
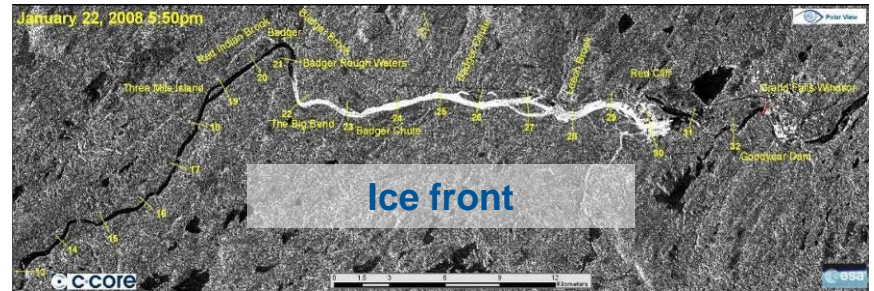
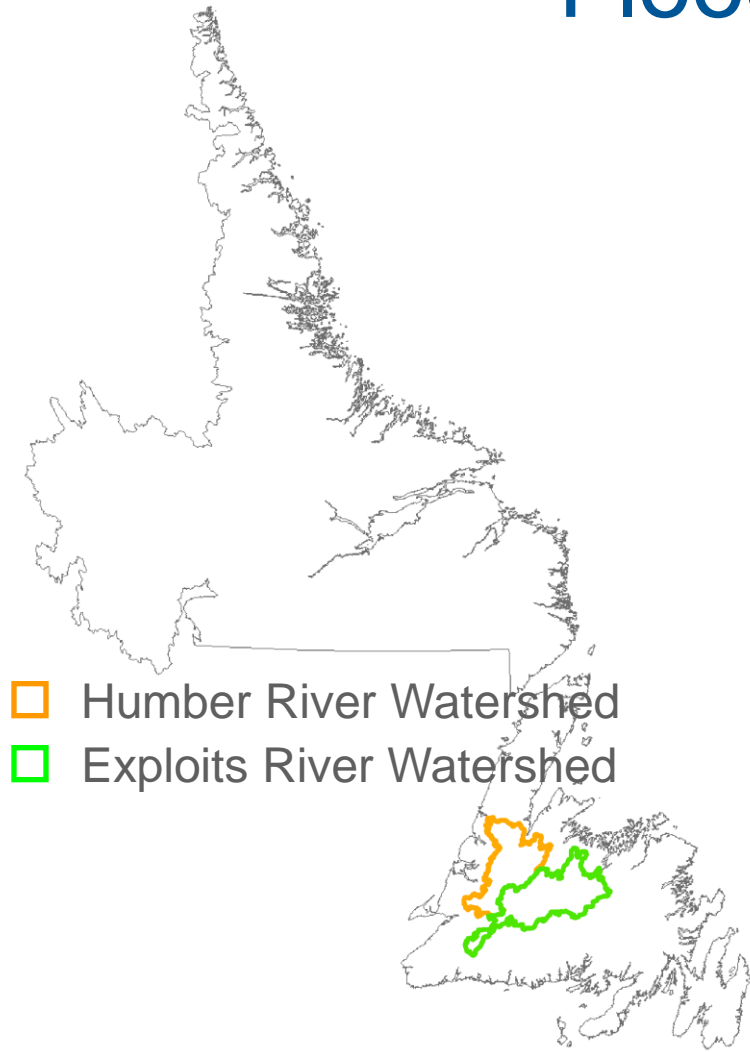


# Flood Forecasting

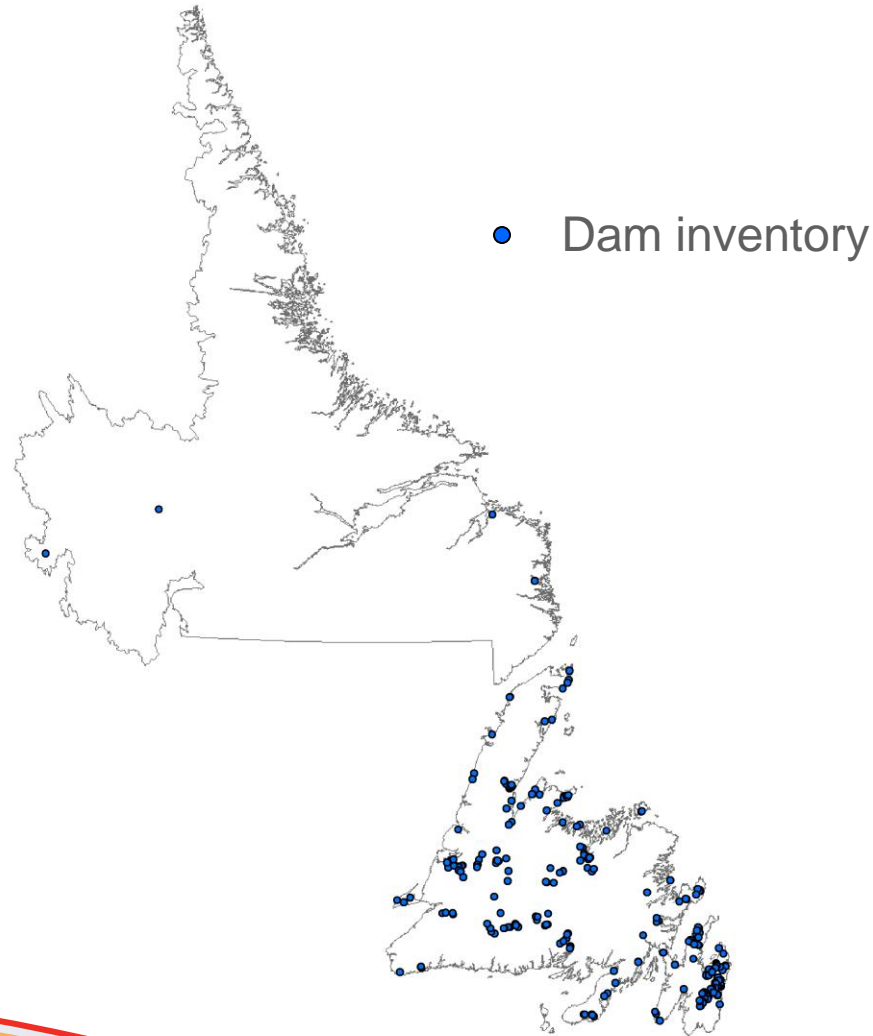


# Flood Forecasting

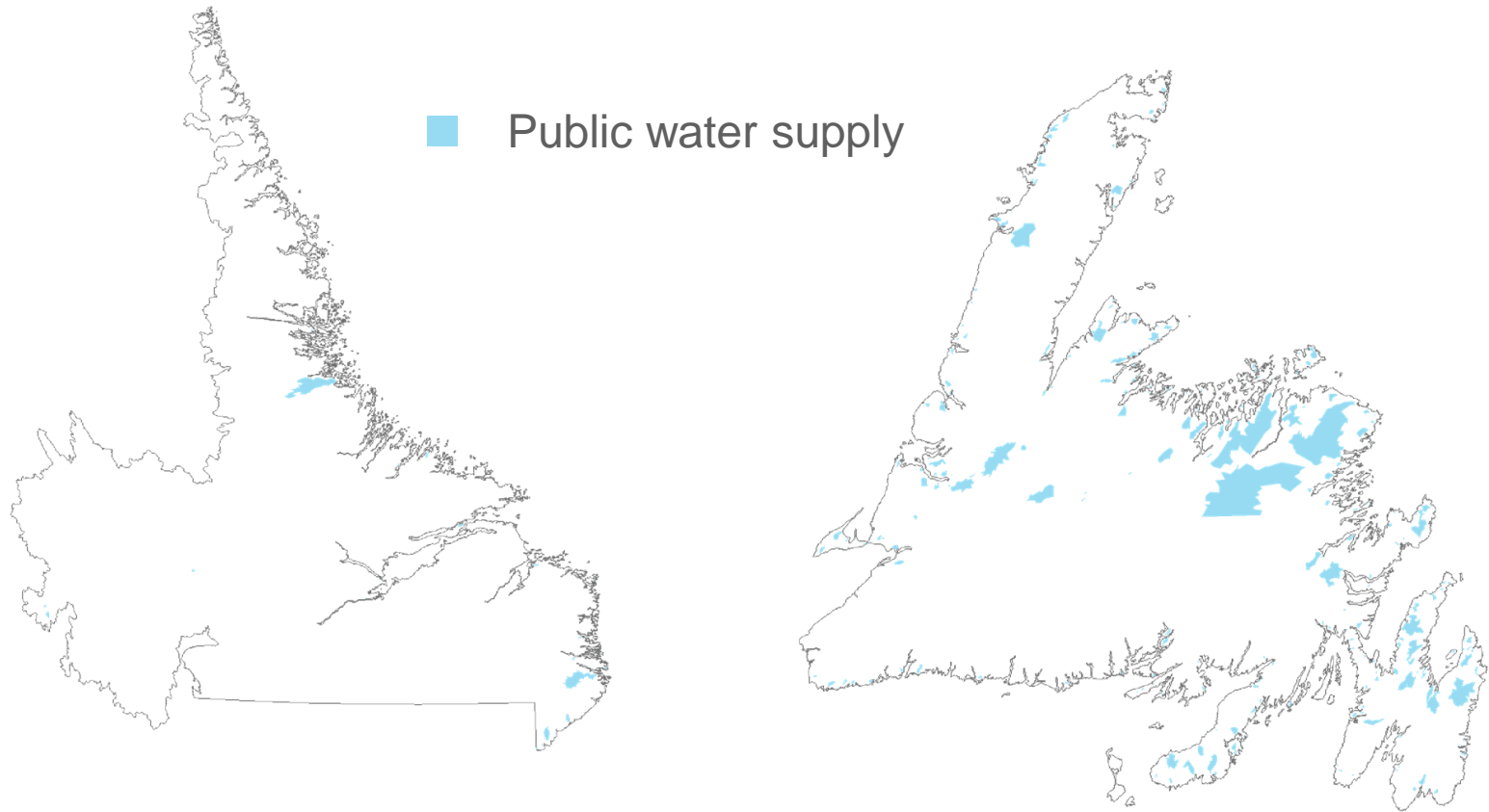
## ESA-GMES/POLARVIEW



# Hydropower Generation



# Drinking Water Supply Management



# Wildlife Management

CBC News

## Plan drafted for dwindling Newfoundland caribou

Friday, February 8, 2008

The population of woodland caribou on Newfoundland has dropped by almost two-thirds in just over a decade, prompting a government program to figure out why.

About 90,000 caribou roamed the bogs and forests on the island in the mid-1990s. That number is now down to 37,000, with the Grey River herd on the south coast nearly wiped out, with only one in every 10 animals now left.



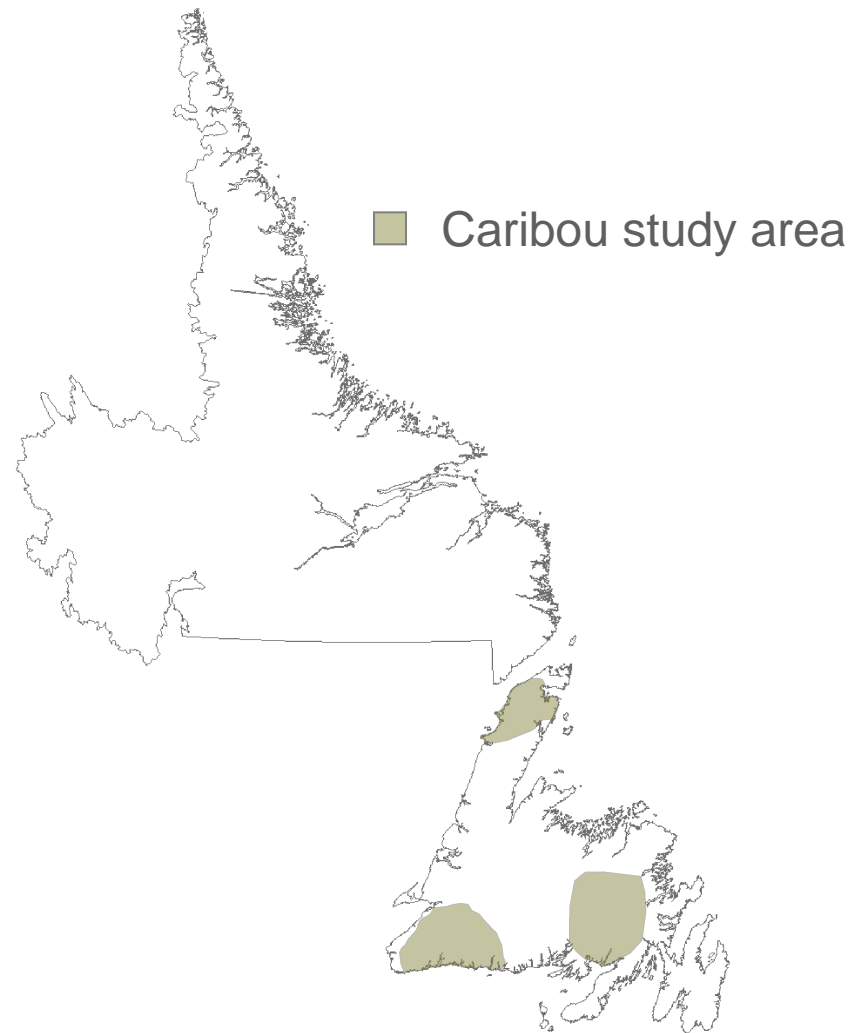
# Wildlife Management

CBC News

## Plan drafted for dwindling Newfoundland caribou

Friday, February 8, 2008

The Newfoundland and Labrador government on Thursday announced a \$15.3-million program to better manage the herds, and to develop better scientific knowledge...

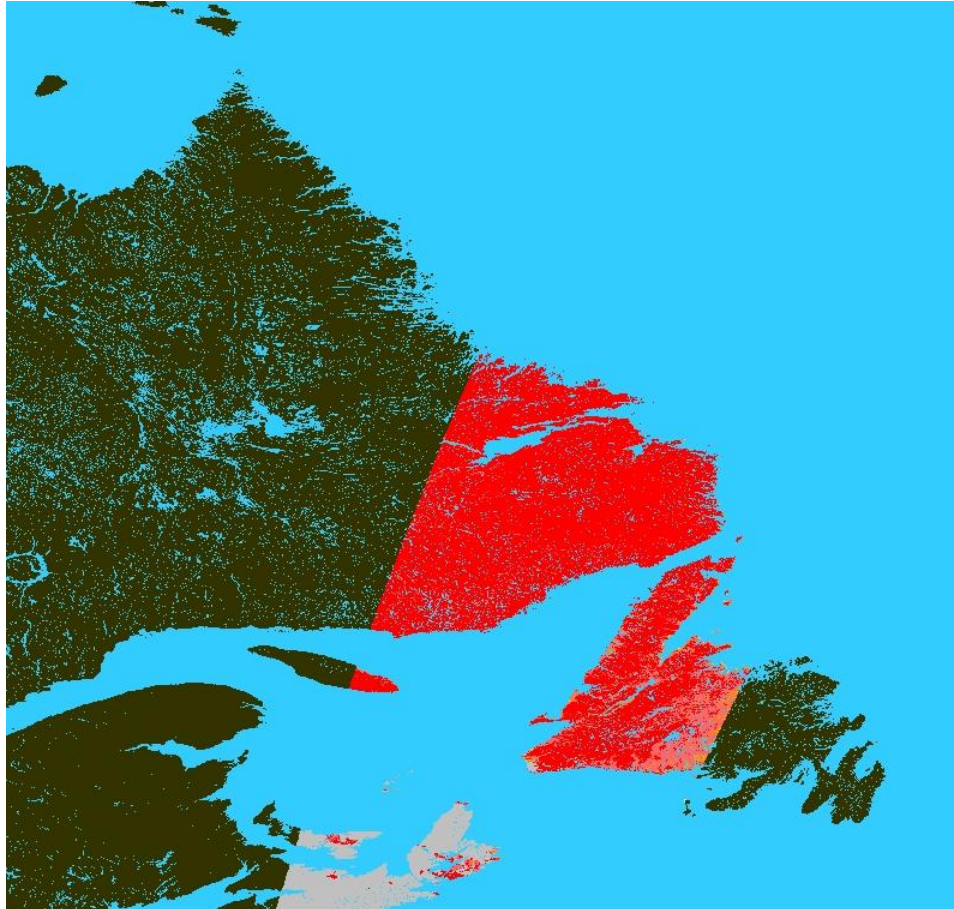








---

# GLOBSNOW PRODUCT REVIEW

---

# GlobSnow – Snow Extent



-   $10\% < \text{FSC} \leq 50\%$  (DN = 7)
-   $50\% < \text{FSC} \leq 90\%$  (DN = 8)
-   $90\% < \text{FSC} \leq 100\%$  (DN = 9)
-  Cloud (DN = 20)
-  Water body (DN = 40)
-  Not mapped (DN = 53)

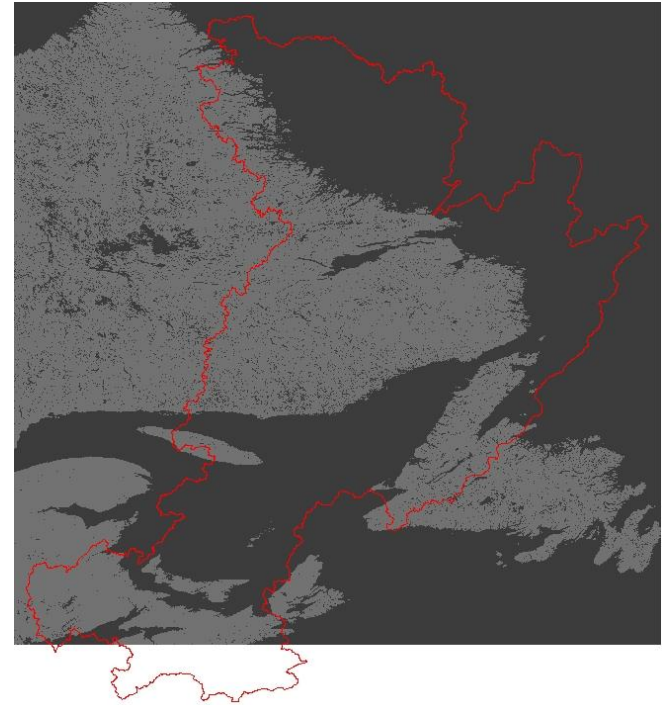


# Snow Products

Parameter	GLOBSNOW	NSIDC	WRMD
Product type	Snow Extent (SE) Snow Water Equivalent (SWE)	SE SWE	SE
Coverage	Global (SE) N. Hemisphere (SWE)	Global (SE) N. Hemisphere (SWE)	Local
Temporal resolution	3 – 7 days (SE) 1-2 days (SWE)	1 day (SE) 1-2 days (SWE)	≤ 1 day (SE)
Ground resolution	1100m x 660m (SE) 25km x 25km (SWE)	500m x 500m (SE) 25km x 25km (SWE)	500m x 500m (SE)
Sensor	ERS-2/ATSR-2 (SE) ENVISAT/AATSR (SE) AMSR-E (SWE)	MODIS-Terra (SE) AMSR-E (SWE)	MODIS-Terra (SE)
Processing time	< 1 minute	< 1 minute	~ 10 minutes

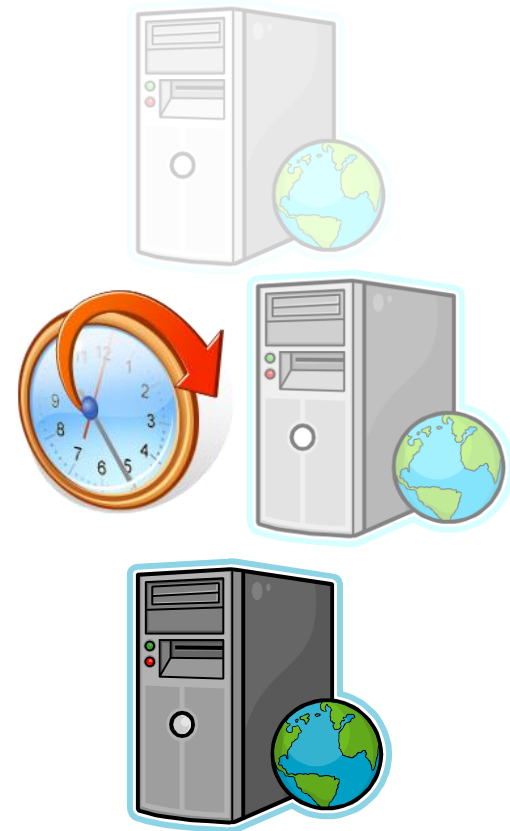
# Product Review

- HDF files lack georeferencing info



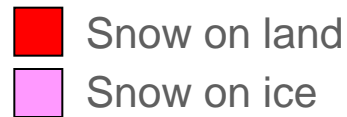
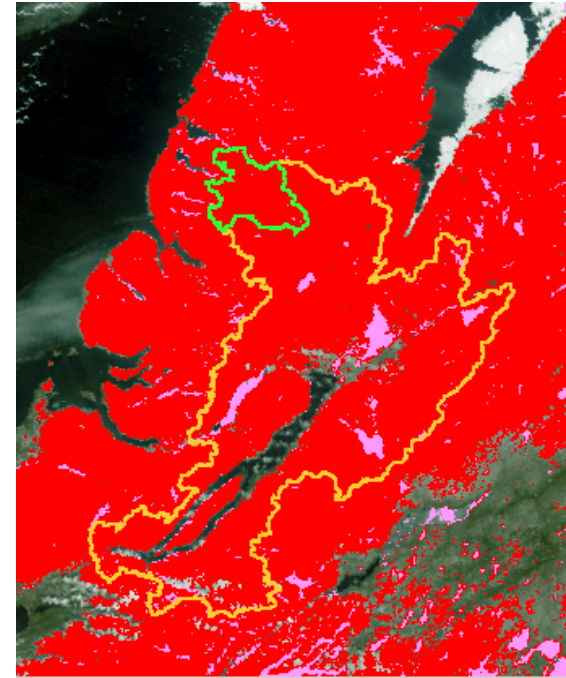
# Product Review

- HDF files lack georeferencing info
- Near-real time data in 2010-2011



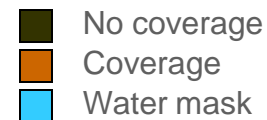
# Product Review

- HDF files lack georeferencing info
- Near-real time data in 2010-2011
- SE product lacks snow over water bodies



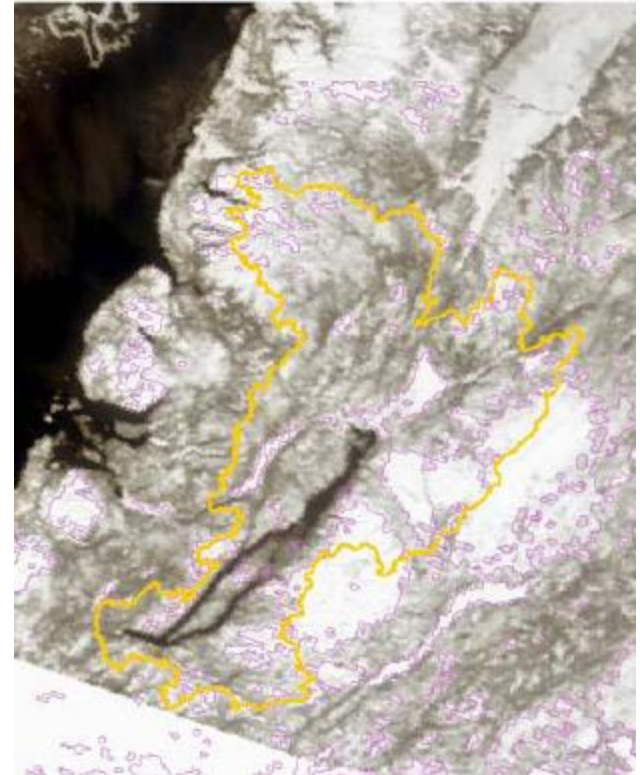
# Product Review

- HDF files lack georeferencing info
- Near-real time data in 2010-2011
- SE product lacks snow over water bodies
- No current aggregated SE product for Newfoundland & Labrador

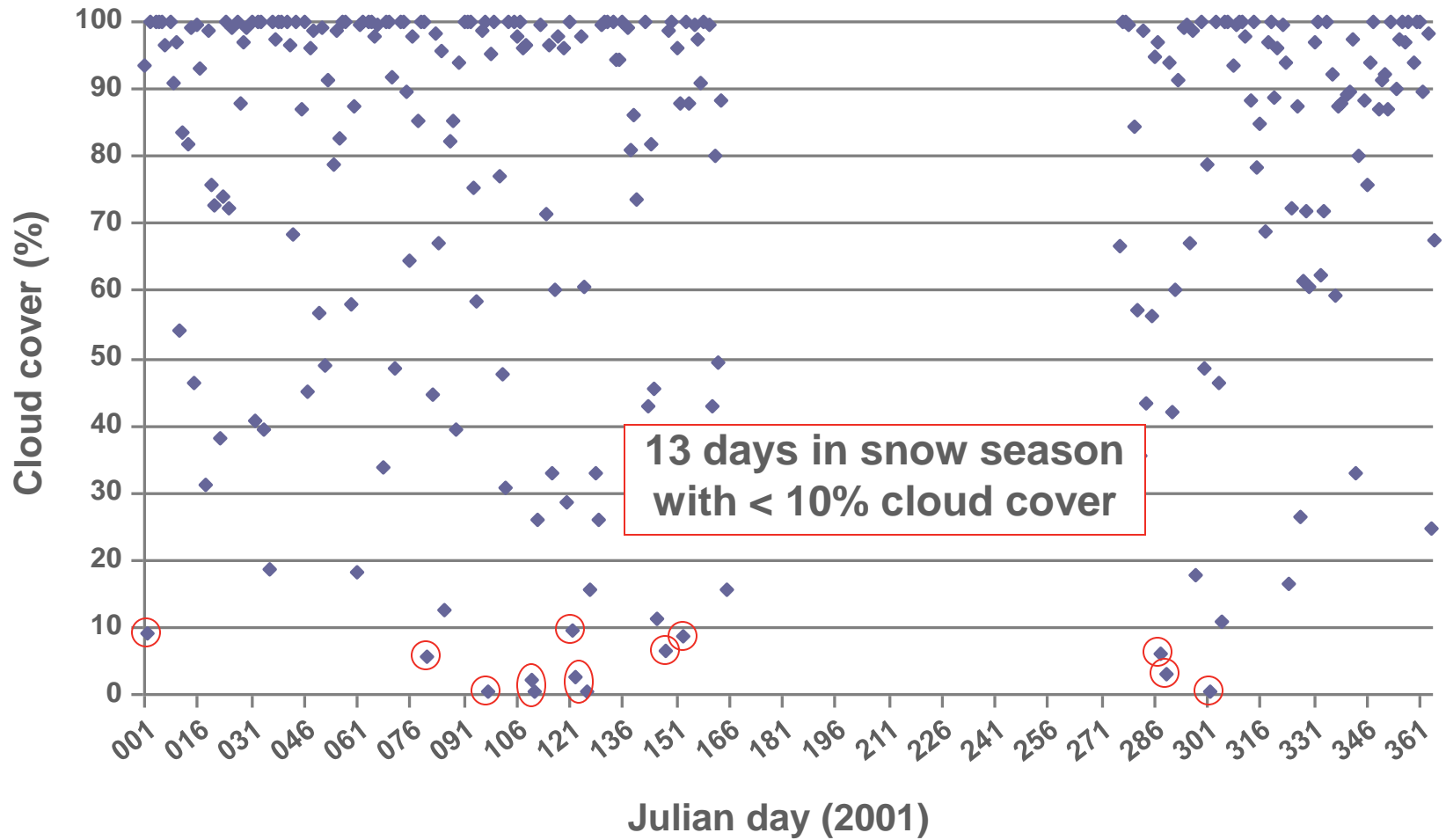


# Product Review

- HDF files lack georeferencing info
- Near-real time data in 2010-2011
- SE product lacks snow over water bodies
- No current aggregated SE product for Newfoundland & Labrador
- SE Coverage Frequency
  - Limited cloud free conditions



# Cloud Cover



---

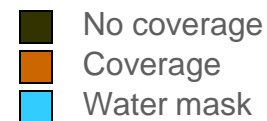
# PATH FORWARD

---



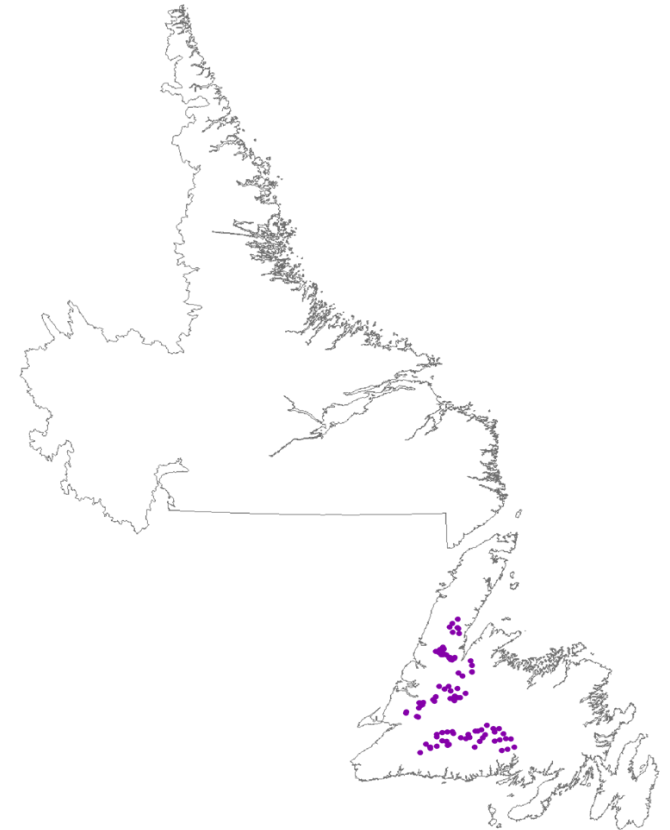
# Path Forward

- Examine coverage frequency
  - Limited cloud free conditions
- Compare SE & SWE products to snow survey data
- Install automated snow monitoring stations
- Compare all three snow extent products
- SWE examination



# Path Forward

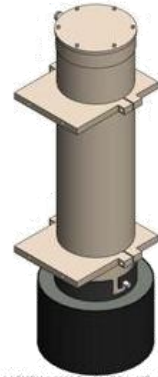
- Examine coverage frequency
  - Limited cloud free conditions
- Compare SE & SWE products to snow survey data
- Install automated snow monitoring stations
- Compare all three snow extent products
- SWE examination



- Snow course survey  
~100 sites

# Path Forward

- Examine coverage frequency
  - Limited cloud free conditions
- Compare SE & SWE products to snow survey data
- Install automated snow monitoring stations
- Compare all three snow extent products
- SWE examination

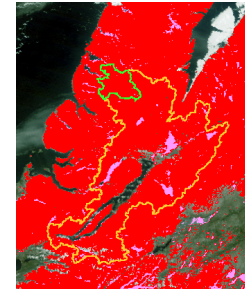


Model GAMON © 2009 Campbell Scientific Canada (Corp.)



# Path Forward

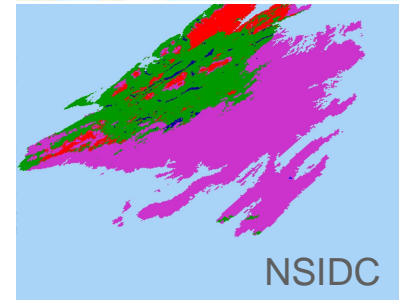
- Examine coverage frequency
  - Limited cloud free conditions
- Compare SE & SWE products to snow survey data
- Install automated snow monitoring stations
- Compare all three snow extent products
- SWE examination



WRMD



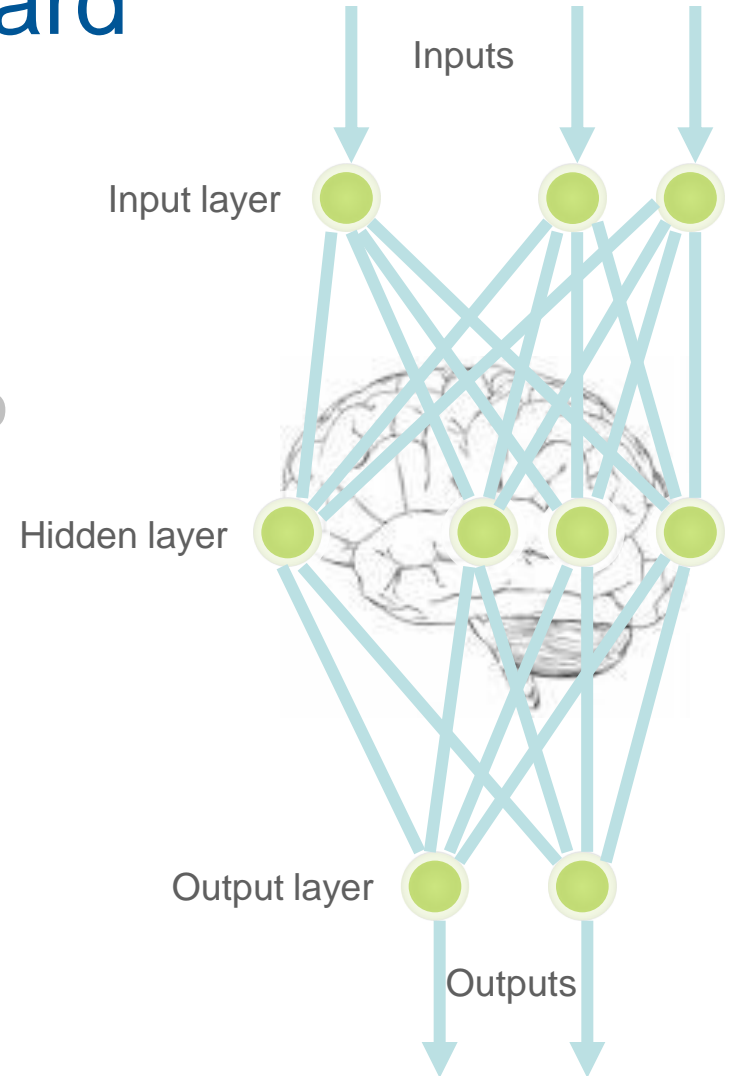
GlobSnow



NSIDC

# Path Forward

- Examine coverage frequency
  - Limited cloud free conditions
- Compare SE & SWE products to snow survey data
- Install automated snow monitoring stations
- Compare all three snow extent products
- SWE examination through ANN



---

# THANK YOU

---

